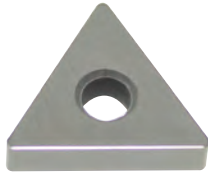


CERAMIC Inserts

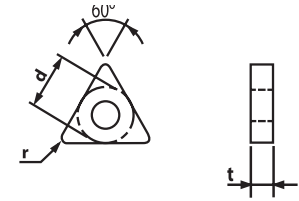


TNGA

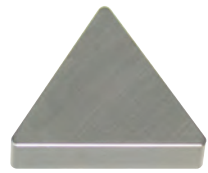
*For additional technical information see page E181-182



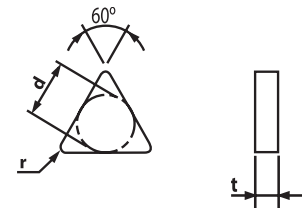
Designation	ISO	CERAMIC			(inch)			Applicable Holders	
		GP100	GP300	S400	d	t	r	Holder	Page No.
TNGA 222	110308	149403 \$ 12.28	149401 \$ 12.93		0.250	0.125	0.031	Turning MTCNN E51 MTENN E52 MTFNR/L E52 MTGNR/L E53 MTJNR/L E53 Boring MTFNR/L E65 MTUNR/L E65 PTFNR/L E69	
TNGA 331	160404	149520 \$ 13.50	149522 \$ 14.16		0.375	0.187	0.016		
TNGA 332	160408	149524 \$ 13.50	149526 \$ 12.27		0.375	0.187	0.031		
TNGA 333	160412	149528 \$ 13.50	149529 \$ 14.16		0.375	0.187	0.047		
TNGA 432	220408	149530 \$ 23.91			0.500	0.187	0.031		
TNGA 433	220412	149532 \$ 20.65			0.500	0.187	0.047		
TNGA 434	220416	149534 \$ 20.65			0.500	0.187	0.063		



TNG



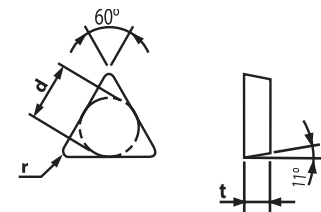
Designation	ISO	CERAMIC			(inch)			Applicable Holders	
		GP100	GP300	S400	d	t	r	Holder	Page No.
TNG 321	160304	149500 \$ 13.14			0.375	0.125	0.016		
TNG 332	160408	149502 \$ 13.50	149504 \$ 12.92		0.375	0.187	0.031		
TNG 333	160412	149506 \$ 13.50			0.375	0.187	0.047		
TNG 431	220404	149508 \$ 20.65			0.500	0.187	0.016		
TNG 432	220408	149510 \$ 20.65			0.500	0.187	0.031		
TNG 433	220412	149512 \$ 20.65			0.500	0.187	0.047		



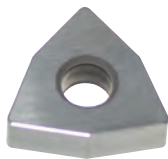
TPG



Designation	ISO	CERAMIC			(inch)			Applicable Holders	
		GP100	GP300	S400	d	t	r	Holder	Page No.
TPG 221	110304	149536 \$ 17.62	149538 \$ 18.49		0.250	0.125	0.016		
TPG 222	110408	149540 \$ 17.62	149542 \$ 18.49		0.250	0.125	0.031		
TPG 321	160304	149544 \$ 18.78	149546 \$ 19.72		0.375	0.125	0.016		
TPG 322	160308	149548 \$ 18.78	149550 \$ 16.55		0.375	0.125	0.031		
TPG 323	160312	149552 \$ 18.78	149554 \$ 19.72		0.375	0.125	0.047		



WNGA



Designation	ISO	CERAMIC			(inch)			Applicable Holders	
		GP100	GP300	S400	d	t	r	Holder	Page No.
WNGA 432	080408		149628 \$ 23.60	149630 \$ 35.98	0.500	0.187	0.031		
WNGA 433	080412		149632 \$ 23.03	149634 \$ 35.98	0.500	0.187	0.047		

