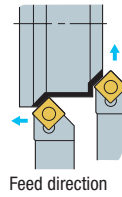
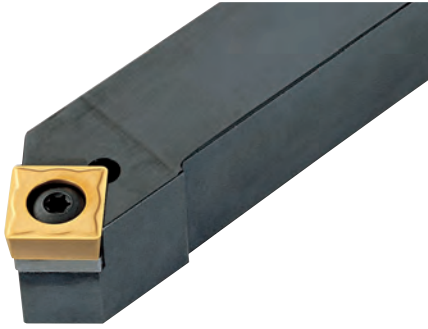
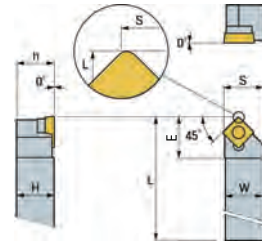


### SSSCR



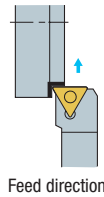
Right-hand shown



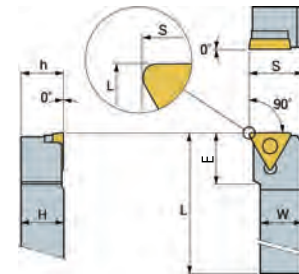
Ref	Holder Style		Application								Inserts	Parts			
Comment	S Style, Approach Angle 45°		Turning, Facing												
SSSCR	Code #		Code #		H	W	L	S	h	E					
	Right	Price \$	Left	Price \$											
10-3A	145992	140.01			0.625	0.625	4.000	0.670	0.625	0.610	SC □ T 32.5 □	FTGA03512 146933 \$ 14.82	-	-	TW15P 146940 \$ 17.45
12-4B	145996	144.54			0.750	0.750	4.500	0.659	0.750	0.945	SC □ T 43 □	FTGA0411F 146944 \$ 13.62	SS42S 145997 \$ 15.01	SHXN0610F 145998 \$ 23.08	TW15P 146940 \$ 17.45

► P. E19, E36

### STFCR



Right-hand shown



Ref	Holder Style		Application								Inserts	Parts			
Comment	F Style, Approach Angle 90°		Facing												
STFCR	Code #		Code #		H	W	L	S	h	E					
	Right	Price \$	Left	Price \$											
10-2A	145777	186.39			0.625	0.625	4.000	0.750	0.625	0.551	TC □ T 21.5 □	FTKA02565 146930 \$ 14.61	-	-	TW07P 146939 \$ 16.73
12-3B	145987	170.68			0.750	0.750	4.500	1.000	0.750	0.748	TC □ T 32.5 □	FTGA03512 146933 \$ 14.82	ST32S 145999 \$ 19.56	SHXN0509F 146935 \$ 22.72	TW15P 146940 \$ 17.45

► P. E22-24