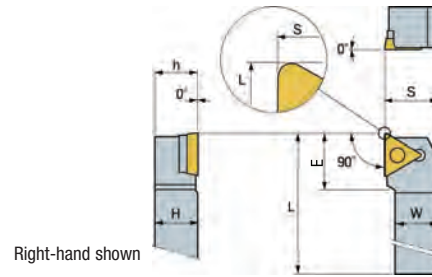
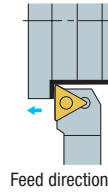
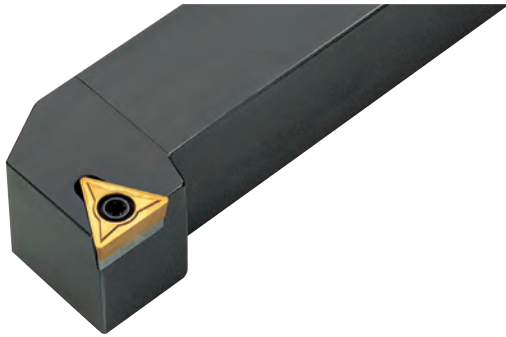


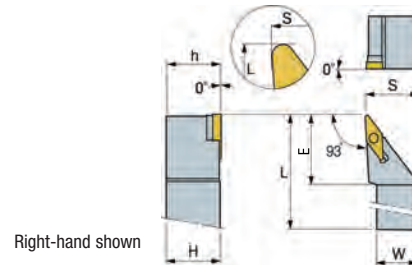
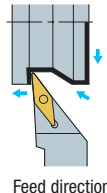
## STGCR/L



| Ref     | Holder Style                |          |        |          | Application |       |       |       |       |       | Inserts       | Parts                           |          |            |                             |
|---------|-----------------------------|----------|--------|----------|-------------|-------|-------|-------|-------|-------|---------------|---------------------------------|----------|------------|-----------------------------|
| Comment | G Style, Approach Angle 90° |          |        |          | Turning     |       |       |       |       |       |               |                                 |          |            |                             |
| STGCR/L | Code #                      |          | Code # |          | H           | W     | L     | S     | h     | E     | TC □ T 21.5 □ | Screw                           | Shim     | Shim Screw | Wrench                      |
|         | Right                       | Price \$ | Left   | Price \$ |             |       |       |       |       |       |               | FTKA02565<br>146930<br>\$ 14.61 | -        | -          | TW07P<br>146939<br>\$ 16.73 |
| 08-2K   | 145988                      | 118.58   | 146713 | 121.46   | 0.500       | 0.500 | 3.150 | 0.625 | 0.500 | 0.551 | TC □ T 21.5 □ | FTKA02565<br>146930<br>\$ 14.61 | -        | -          | TW07P<br>146939<br>\$ 16.73 |
| 08-3K   | 145991                      | 166.64   | 146714 | 100.36   | 0.500       | 0.500 | 3.150 | 0.625 | 0.500 | 0.551 | TC □ T 32.5 □ | FTGA03512                       | ST32S    | SHXN0509F  | TW15P                       |
| 12-3B   | 145991                      | 166.64   | 146715 | 170.68   | 0.750       | 0.750 | 4.500 | 1.000 | 0.750 | 0.827 |               | 146933                          | 145999   | 146935     | 146940                      |
| 16-3D   | 145793                      | 145.62   |        |          | 1.000       | 1.000 | 6.000 | 1.250 | 1.000 | 0.827 |               | \$ 14.82                        | \$ 19.56 | \$ 22.72   | \$ 17.45                    |

➤ P. E22-24

## SVJCR/L



| Ref     | Holder Style                |          |        |          | Application      |       |       |       |       |       | Inserts     | Parts     |          |            |          |
|---------|-----------------------------|----------|--------|----------|------------------|-------|-------|-------|-------|-------|-------------|-----------|----------|------------|----------|
| Comment | J Style, Approach Angle 93° |          |        |          | Turning, Copying |       |       |       |       |       |             |           |          |            |          |
| SVJCR/L | Code #                      |          | Code # |          | H                | W     | L     | S     | h     | E     | VC □ T 33 □ | Screw     | Shim     | Shim Screw | Wrench   |
|         | Right                       | Price \$ | Left   | Price \$ |                  |       |       |       |       |       |             | FTGA03512 | SV32S    | SHXN0509F  | TW15P    |
| 12-3C   | 148061                      | 144.54   |        |          | 0.750            | 0.750 | 5.000 | 1.000 | 0.750 | 1.575 | VC □ T 33 □ | FTGA03512 | SV32S    | SHXN0509F  | TW15P    |
| 16-3D   | 147229                      | 125.57   | 147382 | 158.09   | 1.000            | 1.000 | 6.000 | 1.250 | 1.000 | 1.575 |             | 146933    | 146950   | 146935     | 146940   |
|         |                             |          |        |          |                  |       |       |       |       |       |             | \$ 14.82  | \$ 17.32 | \$ 22.72   | \$ 17.45 |

➤ P. E28

Prices in this catalogue are subject to change without notice. If there is a discrepancy between a product price listed in this catalogue and that listed on [www.sowatool.com](http://www.sowatool.com), the price on our website will take precedence.

Images are representational only and may not reflect actual product.