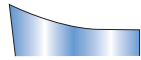
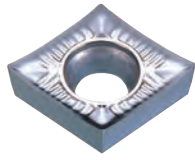
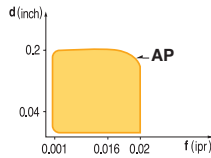




CCGT-AP (AP Chipbreaker is for Aluminum)

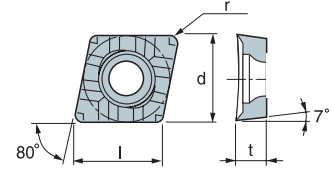


Exclusive chip breaker for aluminum and aluminum alloy



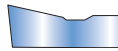
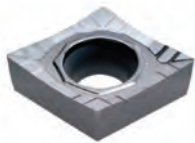
■ USE Aluminum Cutting

■ Recommendation
AP $d = 0.005 \sim 0.2 \text{ inch}$
 $f = 0.001 \sim 0.02 \text{ ipr}$



		Coated Carbide										Diamond Coated	Uncoated Carbide	(inch)				Applicable Holders	
Designation	ISO	PT10C	PT20C	PT22C	PT30C	PM10P	MT20C	MT30P	KT05C	KT10C	ST10P	ND100	KT10U	l	d	t	r	Holder	Page No.
CCGT 21.51-AP	060204												146024 \$ 20.67	0.256	1/4	3/32	1/64	Turning SCACR/L	E55
CCGT 32.50.5-AP	09T302												146027 \$ 24.23	0.382	3/8	5/32	0.008		
CCGT 32.51-AP	09T304											146701 \$ 151.30	146011 \$ 24.23	0.382	3/8	5/32	1/64		
CCGT 32.52-AP	09T308												146012 \$ 24.23	0.382	3/8	5/32	1/32		
CCGT 431-AP	120404												146627 \$ 28.08	0.508	1/2	3/16	1/64		
CCGT 432-AP	120408												146023 \$ 28.08	0.508	1/2	3/16	1/32		

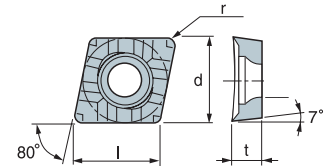
CCGT-AM (AM Chipbreaker is for Aluminum)



High stability of cutting edge secures great performance in high speed and interrupted cutting
 High speed of medium and interrupted operation

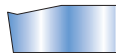
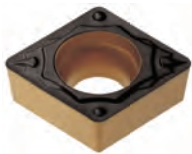
■ USE Aluminum Cutting

■ Recommendation
AM $d = 0.020 \sim 0.157 \text{ inch}$
 $f = 0.002 \sim 0.020 \text{ ipr}$

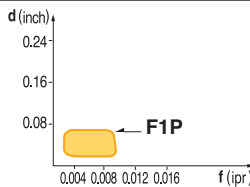


		Coated Carbide										Cermet		Uncoated Carbide	(inch)				Applicable Holders	
Designation	ISO	PT10C	PT20C	PT22C	PT30C	PM10P	MT20C	MT30P	KT05C	KT10C	ST10P	PT10S	PT20S	KTM10U	l	d	t	r	Holder	Page No.
CCGT 21.50.5-AM	060202													145661 \$ 20.10	0.256	1/4	3/32	0.008	Turning SCACR/L	E55
CCGT 21.51-AM	060204													145681 \$ 20.10	0.256	1/4	3/32	1/64		
CCGT 21.52-AM	060208													145682 \$ 20.10	0.256	1/4	3/32	1/32		
CCGT 32.50.5-AM	09T302													145662 \$ 23.55	0.382	3/8	5/32	0.008		
CCGT 32.51-AM	09T304													145683 \$ 23.55	0.382	3/8	5/32	1/64		
CCGT 430.5-AM	120402													145684 \$ 27.28	0.508	1/2	3/16	0.008		
CCGT 431-AM	120404													145685 \$ 27.28	0.508	1/2	3/16	1/64		
CCGT 432-AM	120408													145686 \$ 27.28	0.508	1/2	3/16	1/32		

CCGT-F1P

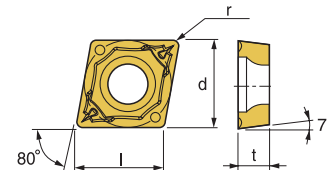


Excellent chip control at shallow depth of cut and low feed rate
 Excellent surface finish of workpiece due to reduced cutting force
 Suitable for fine boring



■ USE Finishing

■ Recommendation
F1P $d = 0.004 \sim 0.06 \text{ inch}$
 $f = 0.002 \sim 0.01 \text{ ipr}$



		Coated Carbide										Cermet		Uncoated Carbide	(inch)				Applicable Holders	
Designation	ISO	PT10C	PT20C	PT22C	PT25C	PT30C	MT20C	MT30P	KT05C	KT10C	ST10P	PT10S	PT20S	KTM10U	l	d	t	r	Holder	Page No.
CCGT 32.50.5-F1P	09T302							145626 \$ 25.04			145627 \$ 25.04				0.382	3/8	5/32	0.008	Turning SCACR/L	E55
CCGT 32.51-F1P	09T304				149289 \$ 26.16	145691 \$ 25.04							149177 \$ 20.91	0.382	3/8	5/32	1/64	Boring SCLCR/L		
CCGT 32.52-F1P	09T308						145693 \$ 25.04							0.382	3/8	5/32	1/32			

Quick Choice Grade Selection

P Steel	M Stainless Steel	K Cast Iron - Alum	S Heat Resistant Alloy
-------------------	-----------------------------	------------------------------	----------------------------------