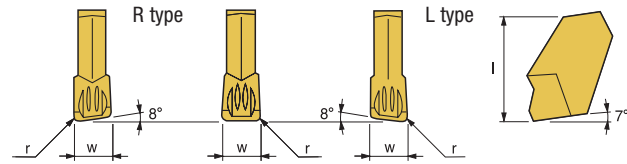


# Pro Part Inserts

## SP Inserts (For Parting Off)



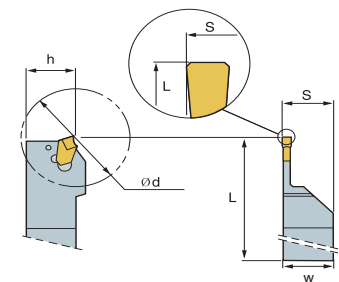
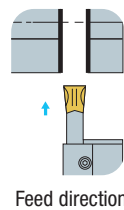
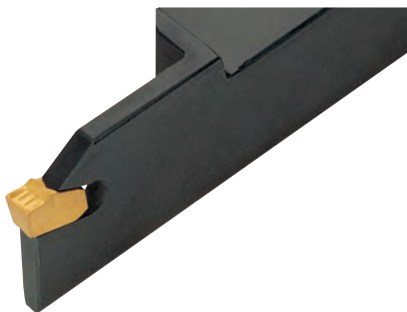
Designation	Coated Carbide									Cermet		Uncoated Carbide	(inch)			Applicable Holders	
	PT10C	PT20C	PT22C	PT30C	MT15C	MT20C	MT30P	KT05C	KT15P	PT10S	PM30S	PTM30U	w	l	r	Holder	Page No.
SP 200				146450 \$ 22.05									0.087	0.366	0.008	PP-B PP-INT	E82 E81
SP 200R				146533 \$ 22.05			146233 \$ 21.48						0.087	0.366	0.008		
SP 300				146452 \$ 22.36	149246 \$ 21.30		145617 \$ 22.36					146451 \$ 17.87	0.122	0.445	0.008		
SP 300R				146446 \$ 22.36									0.122	0.445	0.008		
SP 300L				146447 \$ 22.36									0.122	0.445	0.008		
SP 400				146454 \$ 23.10								146453 \$ 18.39	0.161	0.445	0.009		
SP 400R				146455 \$ 23.10									0.161	0.445	0.009		
SP 400L				146057 \$ 23.10									0.161	0.445	0.009		
SP 500				146456 \$ 24.23									0.201	0.449	0.011		
SP 500R				147373 \$ 23.55									0.201	0.449	0.011		
SP 500L				146058 \$ 23.55									0.201	0.449	0.011		
SP 600				146458 \$ 26.05									0.252	0.449	0.014		

### Quick Choice Grade Selection

<b>P</b> Steel	<b>M</b> Stainless Steel	<b>K</b> Cast Iron - Alum	<b>S</b> Heat Resistant Alloy
-------------------	-----------------------------	------------------------------	----------------------------------

# Pro Part-Off Integral Shank Holder

## PP-INT



Ref	Holder Style	Application							Inserts	Parts
Comment		Parting Off								
		(inch)								
PP-INT	Code #	Price \$	h	w	L	ød	S		Wrench	
075-3	147433	201.69	0.750	0.750	4.724	1.575	0.750	SP300, 300R/L		
100-3	148231	201.69	1.000	1.000	5.906	2.362	1.000	SP300, 300R/L	SW 50L	
100-4	148232	201.69	1.000	1.000	5.906	2.756	1.000	SP400, 400R/L	146960 \$ 3.88	

► P. E81