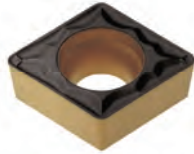
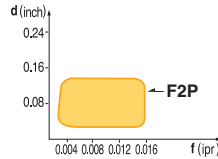


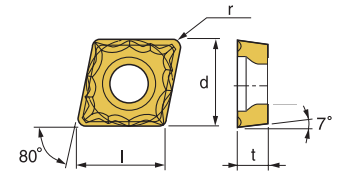
CCMT-F1P/F2P



- Excellent chip control at wide range of cutting conditions
- Suitable for stainless steel cutting

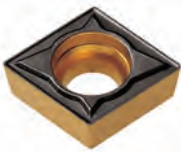


- USE Medium
- Recommendation
F2P $d = 0.02 \sim 0.14$ inch
 $f = 0.002 \sim 0.016$ ipr

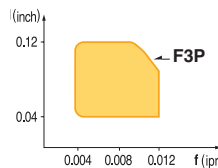


Designation	ISO	Coated Carbide											Cermet	Uncoated Carbide	(inch)				Applicable Holders	
		PT10C	PT15C	PT20C	PT25C	PT30C	MT15C	MT20C	MT30P	KT05C	KT10C	ST10P			PT20S	KTM10U	l	d	t	r
CCMT 21.50.5-F1P	060202														0.256	1/4	3/32	0.008	Turning SCACR/L Boring SCLCR/L	E55 E69
CCMT 32.51-F1P	09T304				149257 \$ 15.28									0.382	3/8	5/32	1/64			
CCMT 21.50.5-F2P	060202		149494 \$ 14.58		149252 \$ 14.59									0.256	1/4	3/32	0.008	Turning SCACR/L Boring SCLCR/L	E55 E69	
CCMT 21.51-F2P	060204		149495 \$ 14.59		149227 \$ 14.58		149255 \$ 14.59					148450 \$ 14.18		0.256	1/4	3/32	1/64			
CCMT 21.52-F2P	060208		149496 \$ 14.58		149497 \$ 14.59									0.256	1/4	3/32	1/32	Turning SCACR/L Boring SCLCR/L	E55 E69	
CCMT 32.50.5-F2P	09T302		149498 \$ 15.03									148452 \$ 14.63		0.382	3/8	5/32	0.008			
CCMT 32.51-F2P	09T304		149499 \$ 15.03		149220 \$ 15.03	149010 \$ 15.03	149238 \$ 15.03					145698 \$ 14.63		0.382	3/8	5/32	1/64	Turning SCACR/L Boring SCLCR/L	E55 E69	
CCMT 32.52-F2P	09T308		149501 \$ 15.03		149221 \$ 15.03	148549 \$ 15.03	149247 \$ 15.03					148454 \$ 15.03		0.382	3/8	5/32	1/32			
CCMT 431-F2P	120404					145718 \$ 19.34						145732 \$ 19.91		0.508	1/2	3/16	1/64	Turning SCACR/L Boring SCLCR/L	E55 E69	
CCMT 432-F2P	120408				149299 \$ 19.92		149337 \$ 19.92					145632 \$ 19.34		0.508	1/2	3/16	1/32			

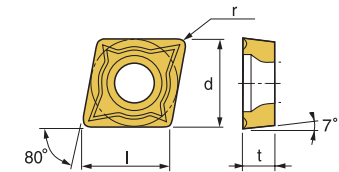
CCMT-F3P



- Suitable for intermittent cutting and cast iron machining
- Good surface finish due to low cutting force
- Suitable for both boring and outer diameter turning

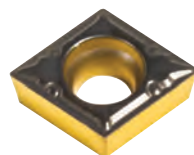


- USE Medium
- Recommendation
F3P $d = 0.04 \sim 0.12$ inch
 $f = 0.004 \sim 0.012$ ipr



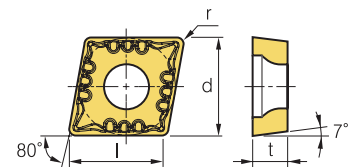
Designation	ISO	Coated Carbide											Cermet	Uncoated Carbide	(inch)				Applicable Holders	
		PT10C	PT20C	PT22C	PT25C	PT30C	MT20C	MT30P	KT05C	KT10C	PT10S	PT20S			KT10U	PM20U	l	d	t	r
CCMT 21.51-F3P	060204				149241 \$ 14.58	145735 \$ 14.58									0.256	1/4	3/32	1/64	Turning SCACR/L Boring SCLCR/L	E55 E69
CCMT 21.52-F3P	060208					145750 \$ 14.58								0.256	1/4	3/32	1/32			
CCMT 32.51-F3P	09T304				149230 \$ 15.03	145774 \$ 15.03		145779 \$ 14.63						0.382	3/8	5/32	1/64	Turning SCACR/L Boring SCLCR/L	E55 E69	
CCMT 32.52-F3P	09T308				149242 \$ 15.03		145797 \$ 15.03						0.382	3/8	5/32	1/32				
CCMT 431-F3P	120404				149262 \$ 19.91	145894 \$ 19.34								0.508	1/2	3/16	1/64	Turning SCACR/L Boring SCLCR/L	E55 E69	
CCMT 432-F3P	120408				149287 \$ 19.91	146159 \$ 19.91							0.508	1/2	3/16	1/32				

CCMT-FVL



- Stable chip control in high toughness material; low carbon steel, pipe steel and steel plates
- Improved chip control for facing, copy machining, and better surface finish

- USE Finishing
- Recommendation
FVL $d = 0.008 \sim 0.059$ inch
 $f = 0.004 \sim 0.014$ ipr



Designation	ISO	Coated Carbide											Cermet	Uncoated Carbide	(inch)				Applicable Holders	
		PT10C	PT15C	PT20C	PT25C	PT30C	MT15C	MT20C	MT30P	KT05C	KT10C	ST10P			PT20S	KTM10U	l	d	t	r
CCMT 21.50.5-FVL	060202		149468 \$ 14.80												0.256	1/4	3/32	0.008	Turning SCACR/L Boring SCLCR/L	E55 E69