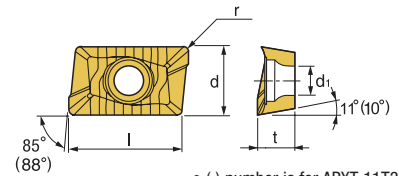




APXT 11T3 & 1604



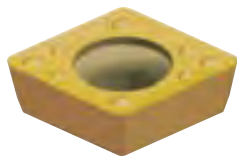
Features
Excellent free cutting geometries
for a variety of applications



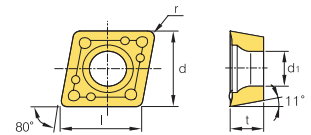
• () number is for APXT 11T3

Designation	Coated Carbide										Uncoated Carbide		(inch)					Applicable Cutter	
	PM10C	PM25C	PM30C	PM30.1P	PM40P	KM20C	MM30P	MT30P	SM20P	PM20U	KTM10U	l	d	t	r	d1	Cutter	Page No.	
APXT 11T3 PDSR-F2		146796 \$ 24.02					148485 \$ 23.65					0.445	0.260	0.142	0.020	0.112	AP 11	E122-123	
APXT 11T3 PDSR-M		146356 \$ 23.65		146110 \$ 24.01			147340 \$ 23.65			146357 \$ 18.70		0.445	0.260	0.142	0.020	0.112	APFM 11	E130-132	
APXT 11T312R-M		146359 \$ 24.02										0.445	0.260	0.142	3/64	0.112			
APXT 11T316R-M					147379 \$ 24.02							0.445	0.260	0.142	1/16	0.112			
APXT 11T3 PDR-A										146358 \$ 19.25		0.445	0.260	0.142	0.020	0.112			
APXT 1604 PDSR-F2						147408 \$ 31.78			148502 \$ 23.42			0.650	0.376	0.227	1/32	0.175	AP 16	E127-123	
APXT 1604 PDSR-M		148178 \$ 29.28	148521 \$ 32.73	146388 \$ 32.73			147338 \$ 29.28					0.650	0.376	0.227	1/32	0.175	APFM 16	E130-132	
APXT 160416R-M			147156 \$ 31.82							146167 \$ 25.47		0.650	0.376	0.227	1/16	0.175			
APXT 160416R PDSR-M		146553 \$ 29.28				147468 \$ 31.78						0.650	0.376	0.227	1/16	0.175			
APXT 160432R-M		147720 \$ 29.28										0.650	0.376	0.227	1/8	0.175			

CPMT-M

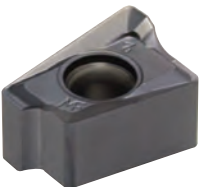


Features
Stronger geometry for roughing
applications in a variety of steels

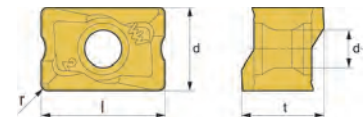


Designation	Coated Carbide										Uncoated Carbide		(inch)					Applicable Cutter	
	PTM50P	PM10P	PM25C	PM30P	PM40P	PC210F	KM20C	MM30P	PC9530	SM20P	PM20U	KTM10U	l	d	t	r	d1	Cutter	Page No.
CPMT09T308-M				147111 \$ 15.87									0.381	3/8	0.156	1/32	0.173	TSC	E145

LNEX-F2/M



Features
Stronger geometry for roughing
applications in a variety of steels



Designation	Coated Carbide										Uncoated Carbide		(inch)					Applicable Cutter	
	PTM50P	PT30P	PM25C	PM30P	PM35P	PM40P	KM10P	MM30P	PC9530	SM20P	PM20U	KTM10U	l	d	t	r	d1	Cutter	Page No.
LNEX100605PNR-F2							148594 \$ 36.45						0.391	0.258	0.258	3/128	0.318	End Mill	
LNEX100605PNR-M							148612 \$ 36.45						0.391	0.258	0.258	3/128	0.318	DS4	E128
LNEX151008PNR-F2							148619 \$ 45.20						0.594	0.391	0.391	1/32	0.177	Face Mill	E135

Quick Choice Grade Selection

P Steel	M Stainless Steel	K Cast Iron - Alum	S Heat Resistant Alloy
------------	----------------------	-----------------------	---------------------------