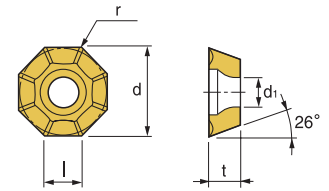




## OFKT-F2, M, A

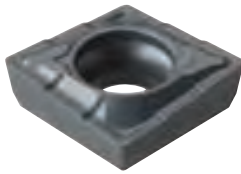


**Features**  
Excellent geometries for a variety of materials

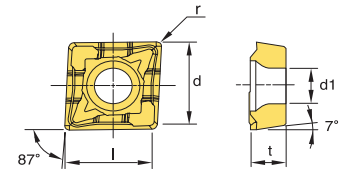


Designation	Coated Carbide										Cermet	Uncoated Carbide		(inch)					Applicable Cutter	
	PM10C	PM25C	PM30C	PM30P	PM35P	PM40P	KM20C	MM30P	MT30P	PT30S		PM20U	KTM10U	l	d	t	r	d1	Cutter	Page No.
OFKT 05T3SN-F2							147760 \$ 28.03						0.205	1/2	5/32	0.020	0.173	OKT MAX	E134	
OFKT 05T3SN-M		146843 \$ 28.42										146676 \$ 22.18	0.205	1/2	5/32	0.020	0.173			
OFKT 05T3FN-A												146559 \$ 22.81	0.205	1/2	5/32	0.020	0.173			

## QCMT



**Features**  
Excellent free cutting geometries for a variety of applications

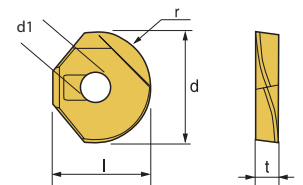


Designation	Coated Carbide										Uncoated Carbide		(inch)					Applicable Cutter	
	PT10C	PT20C	PT22C	PT30C	PM10P	PTM50P	KM20C	MM30P	PC9530	SM20P	PM20U	KT10C	l	d	t	r	d1	Cutter	Page No.
QCMT-050204-CM						147241 \$ 28.38							0.197	0.213	0.038	0.016	0.091	CTD	E150
QCMT-060204-CM						147436 \$ 28.38							0.236	0.252	0.094	0.016	0.098		
QCMT-070304-CM						146364 \$ 28.38							0.276	0.291	0.125	0.016	0.110		
QCMT-080304-CM						147044 \$ 28.97							0.315	0.331	0.125	0.016	0.134		
QCMT-10T304-CM						147472 \$ 34.10							0.394	0.409	0.156	0.016	0.157		

## RC



**Features**  
Excellent for contour milling in a variety of materials



Designation	Coated Carbide										Cermet	Uncoated Carbide		(inch)					Applicable Cutter	
	PM10C	PM25C	PM30C	PM30P	PM35P	PM10P	KM20C	MM30P	MT30P	PT30S		PM20U	KTM10U	l	d	t	r	d1	Cutter	Page No.
RC 5/8						147858 \$ 114.81							0.622	0.625	0.138	0.315	0.228	Mold Mill	E140	
RC 3/4						147859 \$ 133.43							0.701	0.750	0.157	0.394	0.228			
RC 1						147860 \$ 170.32							0.866	1.000	0.197	0.492	0.268			
RC 1-1/8						147861 \$ 223.43							1.055	1.125	0.236	0.591	0.346			
RC 1-1/4						147862 \$ 223.43							1.094	1.250	0.236	0.630	0.346			

### Quick Choice Grade Selection

P Steel	M Stainless Steel	K Cast Iron - Alum	S Heat Resistant Alloy
------------	----------------------	-----------------------	---------------------------