

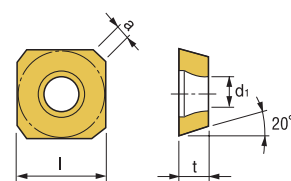


## SECA/SEHT



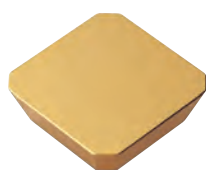
SECA

**Features**  
Flat top geometry for more difficult applications

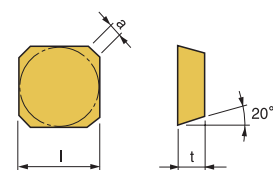


Designation	ISO	Coated Carbide									Cermet	Uncoated Carbide		(inch)				Applicable Cutter					
		PM20C	PM25C	PM35C	PM30P	PM35P	PM40P	KM20C	MM30P	MT30P		PT30S	PM20U	KTM10U	l	t	a	d1	Cutter	Page No.			
SECA 43 AFTN	1204		146749 \$ 28.02									147780 \$ 28.02			146750 \$ 21.78	146751 \$ 22.14		1/2	3/16	0.105	0.219		
SECA 43 AFFN	1204															146036 \$ 22.41		1/2	3/16	0.105	0.219		
SEHT 43 AFN-A	1204															146747 \$ 25.53		1/2	3/16	0.105	0.219		
SEHT 43 AFTN X45	1204		146130 \$ 30.89															1/2	3/16	0.105	0.219		

## SECN

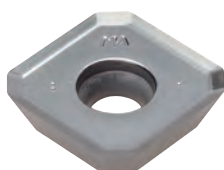


**Features**  
Flat top geometry for a variety of applications

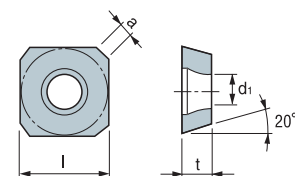


Designation	ISO	Coated Carbide										Uncoated Carbide		(inch)			Applicable Cutter		
		PM20C	PM25C	PM30C	PM30P	PM35P	PM40P	KM20C	MM30P	MT30P	SM20P	PM20U	KTM10U	l	t	a	Cutter	Page No.	
SECN 43 AFFN	1203												146666 \$ 20.36		1/2	1/8	0.091		
SECN 53 AFTN	1504		146661 \$ 35.86												5/8	3/16	0.094		

## SEET-A



**Features**  
Excellent geometry for softer materials such as aluminum



Designation	Coated Carbide									Cermet	Uncoated Carbide		(inch)				Applicable Cutter	
	PM20C	PM25C	PM35C	PM30P	PM35P	PM40P	KM20C	MM30P	MT30P		PT30S	PM20U	KTM10U	l	t	a	d1	Cutter
SEET 0903AGFN-A												147727 \$ 18.91	3/8	1/8	0.083	0.134	MM45°FM	E137
SEET 14M4AGFN-A												147732 \$ 23.65	0.551	0.157	0.104	0.173		

Quick Choice Grade Selection

P Steel	M Stainless Steel	K Cast Iron - Alum	S Heat Resistant Alloy
------------	----------------------	-----------------------	---------------------------