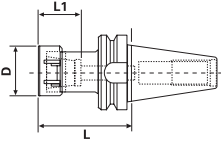


BT Taper ER Collet Chucks



- DIN coolant option - standard
- All ground body
- Factory balanced to save spindle life, tool life and increased productivity
- Threaded through holes for a back-up screw (tool stop) or coolant through when removed
- Wrench not included
- AT2 Taper Accuracy
- RFID Chip Hole



PREMIUM BALANCE
G2.5 at 30,000rpm
CERTIFICATE INCLUDED

PREMIUM BALANCE
G2.5 at 25,000rpm
CERTIFICATE INCLUDED

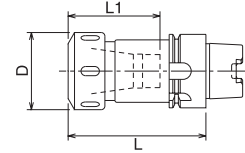
Taper	Collet Series	Collet Range	L	L1	D	Tightening Torque (Nm)	Code No.	Price \$
BT30								
BT30	ER11**	0.019-0.275	2.00	0.65	0.75	29.8	532150*	220.76
BT30	ER11**	0.019-0.275	4.00	0.65	0.75	29.8	532152*	223.53
BT30	ER16**	0.019-0.406	2.36	0.87	1.26	56.9	532154*	220.76
BT30	ER16**	0.019-0.406	4.00	0.87	1.26	56.9	532156*	223.53
BT30	ER16**	0.019-0.406	5.00	0.87	1.26	56.9	532158*	230.47
BT30	ER16**	0.019-0.406	6.00	0.87	1.26	56.9	532160*	256.86
BT30	ER20**	0.039-0.511	2.50	1.06	1.38	81.3	532162*	220.76
BT30	ER20**	0.039-0.511	4.00	1.06	1.38	81.3	532164*	256.86
BT30	ER25	0.039-0.629	2.00	1.18	1.65	128.8	532166*	267.95
BT30	ER25	0.039-0.629	4.00	1.18	1.65	128.8	532168*	267.95
BT30	ER32	0.078-0.787	3.00	1.34	1.97	169.5	532170*	226.31
BT30	ER32	0.078-0.787	5.00	1.34	1.97	169.5	532172*	274.91
BT40								
BT40	ER11**	0.019-0.275	4.00	0.65	0.75	29.8	532176	248.53
BT40	ER11**	0.019-0.275	6.00	0.65	0.75	29.8	532178	280.46
BT40	ER16**	0.019-0.406	3.50	0.87	1.26	56.9	532180	248.53
BT40	ER16**	0.019-0.406	5.00	0.87	1.26	56.9	532182	273.52
BT40	ER20**	0.039-0.511	2.50	1.06	1.38	81.3	532184	248.53
BT40	ER20**	0.039-0.511	4.00	1.06	1.38	81.3	532186	248.53
BT40	ER20**	0.039-0.511	6.00	1.06	1.38	81.3	532188	284.62
BT40	ER25	0.039-0.629	2.25	1.18	1.65	128.8	532190	256.86
BT40	ER25	0.039-0.629	4.00	1.18	1.65	128.8	532192	208.26
BT40	ER25	0.039-0.629	6.00	1.18	1.65	128.8	532194	290.17
BT40	ER32	0.078-0.787	1.06				532191*	224.92
BT40	ER32	0.078-0.787	3.13	1.34	1.97	169.5	532196	248.53
BT40	ER32	0.078-0.787	5.00	1.34	1.97	169.5	532198	284.62
BT40	ER40	0.118-1.023	3.13	1.50	2.50	219.6	532200	284.62
BT40	ER40	0.118-1.023	5.00	1.50	2.50	219.6	532202	317.95
BT50								
BT50	ER16**	0.019-0.406	2.50	0.87	1.26	56.9	532203	326.21
BT50	ER25	0.039-0.629	4.00	1.18	1.65	128.8	532206	326.21

* Not DIN Coolant
** Hex Nut
‡ ER Shorty Collet Chuck

HSK63A ER Collet Chucks



- All ground body
- High rigidity and torque transmission
- Wrench not included
- AT2 Taper Accuracy
- RFID chip hole



PREMIUM BALANCE
G2.5 at 30,000rpm
CERTIFICATE INCLUDED

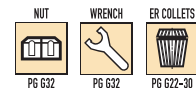
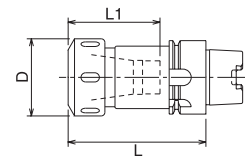
Taper	Collet Series	Collet Range	L	L1	D	Tightening Torque (Nm)	Code No.	Price \$
HSK63A	ER16**	0.019-0.393	3.00	0.866	1.260	56.9	536114	484.55
HSK63A	ER16**	0.019-0.393	5.00	0.866	1.260	56.9	536116	484.55
HSK63A	ER20**	0.039-0.511	3.00	1.062	1.378	81.3	536118	484.55
HSK63A	ER20**	0.039-0.511	5.00	1.062	1.378	81.3	536120	484.55
HSK63A	ER25	0.039-0.629	3.00	1.181	1.654	128.8	536122	484.55
HSK63A	ER25	0.039-0.629	5.00	1.181	1.654	128.8	536124	484.55
HSK63A	ER32	0.078-0.787	4.00	1.260	1.969	169.5	536126	484.55
HSK63A	ER32	0.078-0.787	6.00	1.260	1.969	169.5	536128	565.08
HSK63A	ER40	0.118-1.023	4.00	1.496	2.480	219.6	536130	520.65

** Hex Nut

HSK100A ER Collet Chucks



- All ground body
- High rigidity and torque transmission
- Wrench not included
- AT2 Taper Accuracy
- RFID chip hole

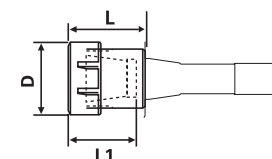


PREMIUM BALANCE
G2.5 at 25,000rpm
CERTIFICATE INCLUDED

Taper	Collet Series	Collet Range	L	L1	D	Tightening Torque (Nm)	Code No.	Price \$
HSK100A	ER16**	0.019-0.393	4.00	0.866	1.260	56.9	536134	555.37
HSK100A	ER16**	0.019-0.393	6.00	0.866	1.260	56.9	536136	701.14
HSK100A	ER20**	0.039-0.511	4.00	1.062	1.378	81.3	536138	555.37
HSK100A	ER20**	0.039-0.511	6.00	1.062	1.378	81.3	536140	701.14
HSK100A	ER25	0.039-0.629	6.00	1.181	1.654	128.8	536144	701.14
HSK100A	ER32	0.078-0.787	4.00	1.260	1.969	169.5	536146	713.65
HSK100A	ER32	0.078-0.787	6.00	1.260	1.969	169.5	536148	765.01
HSK100A	ER40	0.118-1.023	6.00	1.496	2.480	219.6	536152	874.69

** Hex Nut

R8 Taper ER Collet Chucks



Taper	Collet Series	Collet Range	L	L1	D	Tightening Torque (Nm)	Code No.	Price \$
R8	ER16	0.019-0.406	1.25	2.83	1.25	56.9	534360	153.92
R8	ER20	0.039-0.511	2.00	1.50	1.38	81.3	534362	153.92
R8	ER25	0.039-0.629	2.50	1.64	1.66	128.8	534364	159.72

Prices in this catalogue are subject to change without notice. If there is a discrepancy between a product price listed in this catalogue and that listed on www.sowatool.com, the price on our website will take precedence.

Images are representational only and may not reflect actual product.