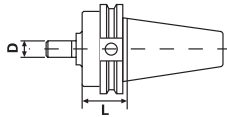


## CAT Taper Jacobs Taper Adapter



- Shank traverse ground to obtain optimum accuracy
- Meets or exceeds ANSI specifications
- 0.0002" or better ensures the best possible cutting tool life

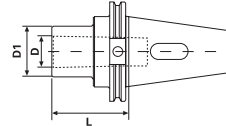


Taper	JT Size	L	D	Code No.	Price \$
CT40	JT#2	1.61	0.560	531490	<b>152.73</b>
CT40	JT#3	1.58	0.812	531492	<b>152.73</b>
CT40	JT#4	1.49	1.13	531494	<b>152.73</b>
CT40	JT#6	1.61	0.677	531496	<b>152.73</b>
CT40	JT#33	1.61	0.625	531498	<b>152.73</b>
CT50	JT#2	1.61	0.560	531500	<b>222.15</b>
CT50	JT#3	1.58	0.812	531502	<b>222.15</b>
CT50	JT#4	1.49	1.13	531504	<b>222.15</b>
CT50	JT#6	1.61	0.677	531506	<b>222.15</b>
CT50	JT#33	1.61	0.625	531508	<b>222.15</b>

## CAT Morse Taper Adapters



- Shank traverse ground to obtain optimum accuracy
- Meets or exceeds ANSI specifications
- 0.0002" or better ensures the best possible cutting tool life

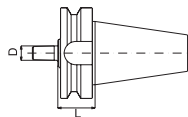


Taper	Size	L	D	D1	Code No.	Price \$
CT40	MT#1	1.75	0.475	1.00	531510	<b>173.56</b>
CT40	MT#2	2.36	0.700	1.25	531512	<b>173.56</b>
CT40	MT#3	3.00	0.938	1.57	531514	<b>187.44</b>
CT40	MT#4	3.54	1.23	1.97	531516	<b>197.16</b>
CT50	MT#2	1.75	0.700	1.25	531518	<b>255.46</b>
CT50	MT#3	1.75	0.938	1.57	531520	<b>255.46</b>
CT50	MT#4	3.00	1.23	1.97	531522	<b>261.02</b>
CT50	MT#5	4.13	1.75	2.75	531524	<b>301.29</b>

## BT Taper Jacobs Taper Adapter



- Shank traverse ground to obtain optimum accuracy
- Meets or exceeds ANSI specifications
- 0.0002" or better ensures the best possible cutting tool life

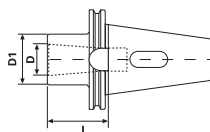


Taper	JT Size	L	D	Code No.	Price \$
BT30	JT#6	1.02	0.677	532224	<b>134.67</b>
BT40	JT#2	1.61	0.560	532230	<b>151.34</b>
BT40	JT#3	1.57	0.812	532232	<b>151.34</b>
BT40	JT#6	1.61	0.677	532234	<b>151.34</b>
BT40	JT#33	1.61	0.625	532236	<b>151.34</b>
BT50	JT#6	1.77	0.677	532237	<b>238.81</b>

## BT Morse Taper Adapters



- Shank traverse ground to obtain optimum accuracy
- Meets or exceeds ANSI specifications
- 0.0002" or better ensures the best possible cutting tool life

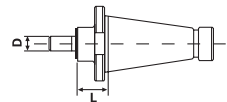


Taper	Size	L	D	D1	Code No.	Price \$
BT30	MT#1	1.75	0.475	1.00	532238	<b>163.83</b>
BT40	MT#1	1.75	0.475	1.00	532242	<b>194.37</b>
BT40	MT#2	2.36	0.700	1.25	532244	<b>194.37</b>
BT40	MT#3	3.00	0.938	1.57	532246	<b>188.82</b>
BT40	MT#4	3.54	1.23	1.97	532248	<b>194.37</b>
BT50	MT#2	1.75	0.700	1.25	532241	<b>286.01</b>
BT50	MT#3	1.75	0.928	1.57	532243	<b>286.01</b>
BT50	MT#4	3.00	1.231	1.89	532245	<b>323.49</b>
BT50	MT#5	4.00	1.748	2.48	532247	<b>329.05</b>

## NMTB Taper Jacobs Taper Adapter



- Shank traverse ground to obtain optimum accuracy
- Meets or exceeds ANSI specifications
- 0.0002" or better ensures the best possible cutting tool life

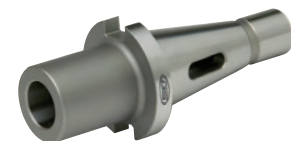
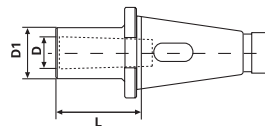


Taper	JT Size	L	D	Code No.	Price \$
NMTB40	JT#2	0.65	0.560	534442	<b>154.42</b>
NMTB40	JT#3	0.61	0.812	534444	<b>154.42</b>
NMTB40	JT#6	0.65	0.677	534446	<b>154.42</b>
NMTB40	JT#33	0.65	0.625	534448	<b>154.42</b>
NMTB50	JT#3	1.30	0.812	534452	<b>215.57</b>
NMTB50	JT#4	1.22	0.1.13	534454	<b>215.57</b>

## NMTB Morse Taper Adapters



- Shank traverse ground to obtain optimum accuracy
- Meets or exceeds ANSI specifications
- 0.0002" or better ensures the best possible cutting tool life

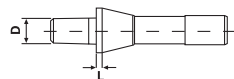


Taper	Size	L	D	D1	Code No.	Price \$
NMTB40	MT#2	1.75	0.70	1.25	534472	<b>165.33</b>
NMTB40	MT#3	2.25	0.94	1.57	534474	<b>165.33</b>
NMTB40	MT#4	3.00	1.23	1.97	534476	<b>165.33</b>
NMTB50	MT#2	1.88	0.70	1.25	534478	<b>243.32</b>
NMTB50	MT#3	2.38	0.94	1.57	534480	<b>250.56</b>
NMTB50	MT#4	3.25	1.23	1.97	534482	<b>257.77</b>
NMTB50	MT#5	4.63	1.75	2.75	534484	<b>282.00</b>

## R8 Jacobs Taper Adapter



- Shank traverse ground to obtain optimum accuracy
- Meets or exceeds ANSI specifications
- 0.0002" or better ensures the best possible cutting tool life

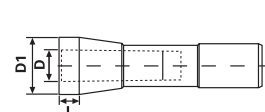


Taper	JT Size	L	D	Code No.	Price \$
R8	JT#2	0.13	0.560	534462	<b>105.94</b>
R8	JT#3	0.13	0.812	534464	<b>105.94</b>
R8	JT#6	0.13	0.677	534466	<b>105.94</b>
R8	JT#33	0.13	0.625	534468	<b>105.94</b>

## R8 Morse Taper Adapters



- Shank traverse ground to obtain optimum accuracy
- Meets or exceeds ANSI specifications
- 0.0002" or better ensures the best possible cutting tool life



Taper	Size	L	D	D1	Code No.	Price \$
R8	MT#1	0.44	0.48	1.00	534486	<b>109.15</b>
R8	MT#2	0.44	0.70	1.25	534488	<b>109.15</b>
R8	MT#3	2.56	0.94	1.57	534490	<b>119.89</b>