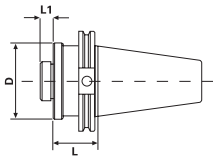
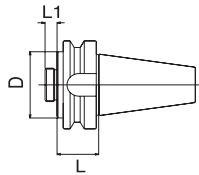


CT Taper Boring Head Holders



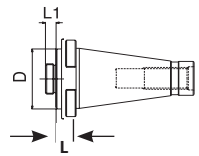
Taper	Thread	L	L1	D	Code No.	Price \$
CT40	7/8 - 20	1.75	0.44	1.75	531526	137.38
CT40	1-1/2 - 18	1.75	0.50	2.96	531528	140.12
CT50	1-1/2 - 18	1.75	0.50	2.96	531532	197.10

BT Taper Boring Head Holders



Taper	Thread	L	L1	D	Code No.	Price \$
BT30	1-1/2-18	1.75	0.50	2.96	532252	138.85

NMTB Taper Boring Head Holders



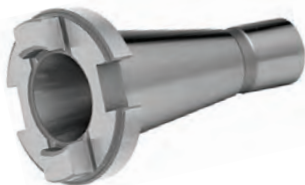
Taper	Thread	L	L1	D	Code No.	Price \$
NMTB40	7/8-20	1.75	0.44	1.75	534492	139.40
NMTB50	7/8-20	1.75	0.44	1.75	534496	204.77
NMTB50	1-1/2-18	1.75	0.50	2.94	534498	197.58

NMTB30 JT6 Jacobs Taper Adapter



Taper	Size	Draw Bar	Code No.	Price \$
30	JT-3	1/2-13	420147	228.45
30	JT-33	1/2-13	420148	241.31
30	JT-6	1/2-13	420149	241.31

NMTB To NMTB Taper Open End Adapters



Outside Taper	Inside Taper	Code No.	Price \$
40	30	420035	466.95
50	30	420040	548.49
50	40	420045	601.66

NMTB To R8 Taper Adapters



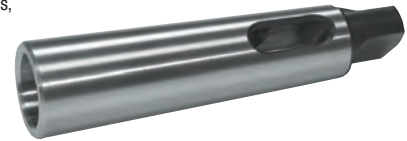
Outside Taper	Inside Taper	Draw Bar	Code No.	Price \$
40	R-8	5/8-11	420060	482.62

Morse Taper Sleeves



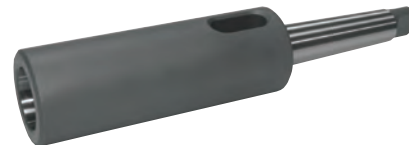
Hardened and Ground Throughout

Used to convert spindles to smaller tapers and to extend the spindles of drill presses, radial drills, boring mills, turret lathes and similar machines.



Sleeve No.	Morse Taper Hole	Morse Taper Outside	Overall Length	Code No.	Price \$
12	1	2	3-5/8	420305	10.40
13	1	3	3-7/8	420310	11.84
23	2	3	4-3/8	420315	11.29
14	1	4	4-7/8	420320	13.38
24	2	4	5	420325	12.72
34	3	4	5-1/2	420330	12.39
15	1	5	6-1/8	420335	27.77
25	2	5	6-1/8	420340	27.77
35	3	5	6-1/8	420345	26.11
45	4	5	6-3/4	420350	26.11
36	3	6	8-5/8	420353	46.03
46	4	6	8-5/8	420355	46.03
56	5	6	8-5/8	420360	46.03

Extension Length Sockets



Sleeve No.	Morse Taper Hole	Morse Taper Shank	Overall Length	Soft, Hard. Tang Code No.	Price \$
21	2	1	6-1/4	420405	165.44
12	1	2	6-1/4	420410	167.31
22	2	2	6-7/8	420415	157.65
32	3	2	7-3/4	420420	180.18
23	2	3	7-5/8	420435	186.62
33	3	3	8-1/2	420440	189.83
43	4	3	9-1/2	420445	260.61
53	5	3	10-1/2	420450	408.30
34	3	4	9-1/2	420465	225.22
44	4	4	10-1/2	420470	299.22
54	5	4	11-7/8	420475	424.71
35	3	5	10-1/2	420480	291.05
45	4	5	11-7/8	420485	337.83
55	5	5	13-1/4	420490	489.06
65	6	5	15-3/8	420495	823.67
46	4	6	14	420500	518.05
56	5	6	15-3/8	420505	620.07