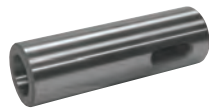


Solid Sockets

Hardened and ground throughout.



Socket No.	Overall Length (in.)	Morse Taper Hole	Outside Dia. (in.)	Code No.	Price \$
1	3-1/2	1	1	420805	148.01
2	3-1/2	1	1-1/4	420810	134.08
3	3-1/2	1	1-1/2	420815	173.92
4	4	2	1	420820	205.92
5	4	2	1-1/4	420825	205.92
6	4	2	1-1/2	420830	205.92
7	4	2	1-3/4	420835	172.94
8	4	2	2	420840	229.14
9	4-3/4	3	1-1/4	420845	222.00
10	4-3/4	3	1-1/2	420850	222.00
11	4-3/4	3	1-3/4	420855	222.00
12	4-3/4	3	2	420860	254.18
13	6	4	1-1/2	420865	276.70
14	6	4	1-3/4	420870	276.70
15	6	4	2	420875	315.31
16	7-3/8	5	2-1/4	420880	346.58
17	7-3/8	5	2-1/2	420885	229.06
18	10-1/8	6	3-1/4	420890	734.97
19	10-1/8	6	3-1/2	420895	849.42

Lathe Mandrels



Diameter (in.)	Overall Length (in.)	Code No.	Price \$
1-5/8	9-1/2	425295	83.99

Annular Cutter Holders



Straight Shank

R8 Shank

Morse Taper Shank

- Holder shank allows different machines to drive cutter
- Select adapter lengths reduce the number of machine set ups



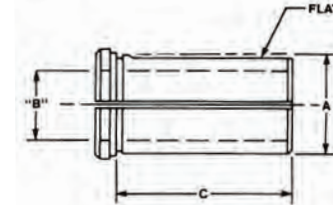
See page D6 for Annular Cutters

Model No.	Shank	Cutter Shank Size	Gauge Length	Code No.	Price \$
Straight Shank - 3 Flats					
HEN-1	1/2	3/4	2-1/8	425435	273.49
HEN-2	3/4	3/4	2	425436	273.49
HEN-2-6	3/4	3/4	6	425437	293.05
HEN-2-12	3/4	3/4	12	425438	334.61
HEN-6-6	3/4	1-1/4	6	425440	336.22
HEN-6-12	3/4	1-1/4	12	425441	296.01
Straight Shank - 2 Flats					
HEN-9-6	3/4	3/4	6	425442	341.35
Morse Taper Shank					
HEN-3	MT2	3/4	2	425444	329.91
HEN-3-6	MT2	3/4	6	425445	366.79
HEN-3-12	MT2	3/4	12	425446	331.40
HEN-4	MT3	3/4	2	425447	363.58
HEN-4-6	MT3	3/4	6	425448	415.05
HEN-4-12	MT3	3/4	12	425449	521.23
HEN-8	MT3	1-1/4	2-3/4	425450	415.05
HEN-8-6	MT3	1-1/4	6	425451	452.27
R8 Shank					
HEN-5	R8	3/4	1-3/4	425453	389.32
HEN-7-6	R8	1-1/4	6	425457	445.30
HEN-7-12	R8	1-1/4	12	425458	590.76

Type B CNC Toolholder Bushings



- Split style
- Shorter length
- Clamp on flat
- Bushing collapses to hold tool
- Used for drills, boring bars, and other tools

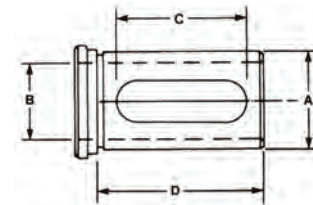


Bushing Type	Dia. (A)	Bore (B)	Length Under Head (C)	Code No.	Price \$
B	1-1/2"	1/2"	2-1/2"	470510	103.05
B	1-1/2"	5/8"	2-1/2"	470511	103.05
B	1-1/2"	3/4"	2-1/2"	470512	103.05
B	1-1/2"	1"	2-1/2"	470513	103.05
B	1-1/2"	1-1/4"	2-1/2"	470514	103.05
B	2"	5/8"	3-1/2"	470515	167.34
B	2"	3/4"	3-1/2"	470516	167.34
B	2"	1"	3-1/2"	470517	167.34
B	2"	1-1/4"	3-1/2"	470518	167.34
B	2"	1-1/2"	3-1/2"	470519	167.34
B	2"	1-3/4"	3-1/2"	470520	167.34

Type C CNC Toolholder Bushings



- Designed for use on all CNC Turning Machines
- Elongated slot
- For use with drills, boring bars, reamers, etc.
- Precision ground throughout



Bushing Type	Dia. (A)	Bore (B)	Length of Slot (C)	Length Under Head (D)	Code No.	Price \$
C	1-1/2"	1/2"	3"	3-3/8"	470500	112.07
C	1-1/2"	5/8"	3"	3-3/8"	470501	112.07
C	1-1/2"	3/4"	3"	3-3/8"	470502	112.07
C	1-1/2"	1"	3"	3-3/8"	470503	112.07
C	1-1/2"	1-1/4"	3"	3-3/8"	470504	112.07
C	2"	3/4"	3-5/8"	4"	470505	170.48
C	2"	1"	3-5/8"	4"	470506	170.48
C	2"	1-1/4"	3-5/8"	4"	470507	170.48
C	2"	1-1/2"	3-5/8"	4"	470508	170.48
C	2"	1-3/4"	3-5/8"	4"	470509	170.48