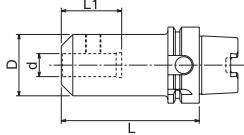


HSK63A End Mill Holders



- High rigidity and torque transmission
- All ground body, bore, nose, flange
- TIR, 0.0001" / 0.003mm OD to ID
- Certified Steel
- AT2 Taper Accuracy
- RFID chip hole



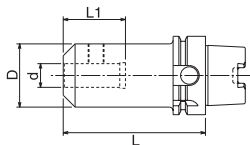
PREMIUM BALANCE
G6.3 at 30,000rpm
CERTIFICATE INCLUDED

Taper	Hole Dia. (d)	Gauge Length (L)	L1	D	Set Screw	Code No.	Price \$
HSK63A	3/16	3.00	0.866	0.748	10-32X1/4	536002	512.32
HSK63A	3/16	5.00	0.866	0.748	10-32X1/4	536004	512.32
HSK63A	1/4	3.00	1.102	0.787	1/4-28X1/4	536006	512.32
HSK63A	1/4	5.00	1.102	0.787	1/4-28X1/4	536008	512.32
HSK63A	5/16	3.00	1.417	0.874	5/16-24X1/4	536010	512.32
HSK63A	5/16	5.00	1.417	0.874	5/16-24X1/4	536012	512.32
HSK63A	3/8	3.50	1.574	1.00	3/8-24X5/16	536014	512.32
HSK63A	3/8	5.00	1.574	1.00	3/8-24X5/16	536016	512.32
HSK63A	7/16	5.00	1.771	1.378	7/16-20X3/8	536020	512.32
HSK63A	1/2	4.00	1.771	1.378	7/16-20X3/8	536022	512.32
HSK63A	1/2	5.00	1.771	1.378	7/16-20X3/8	536024	512.32
HSK63A	5/8	4.00	1.889	1.654	9/16-18X1/2	536026	512.32
HSK63A	3/4	4.50	1.968	1.889	5/8-18X1/2	536030	512.32
HSK63A	3/4	6.00	1.968	1.889	5/8-18X1/2	536032	512.32
HSK63A	1	4.50	2.755	2.363	3/4-16X11/16 (2)	536034	512.32
HSK63A	1-1/4	4.50	2.952	2.88	3/4-16X11/16 (2)	536038	512.32

HSK100A End Mill Holders



- High rigidity and torque transmission
- All ground body, bore, nose, flange
- TIR, 0.0001" / 0.003mm OD to ID
- Certified Steel
- AT2 Taper Accuracy
- RFID chip hole



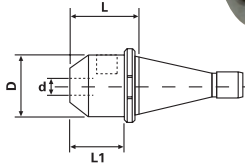
PREMIUM BALANCE
G6.3 at 25,000rpm
CERTIFICATE INCLUDED

Taper	Hole Dia. (d)	Gauge Length (L)	L1	D	Set Screw	Code No.	Price \$
HSK100A	3/16	4.00	0.867	0.748	10-32X1/4	536042	624.78
HSK100A	3/16	6.00	0.867	0.748	10-32X1/4	536044	683.10
HSK100A	1/4	4.00	1.102	0.787	1/4-28X1/4	536046	624.78
HSK100A	1/4	6.00	1.102	0.787	1/4-28X1/4	536048	683.10
HSK100A	5/16	4.00	1.220	0.866	5/16-24X1/4	536050	624.78
HSK100A	5/16	6.00	1.220	0.866	5/16-24X1/4	536052	683.10
HSK100A	3/8	4.00	1.260	1.00	3/8-24X5/16	536054	624.78
HSK100A	3/8	6.00	1.260	1.00	3/8-24X5/16	536056	683.10
HSK100A	1/2	4.00	1.575	1.378	7/16-20X3/8	536062	624.78
HSK100A	1/2	6.00	1.575	1.378	7/16-20X3/8	536064	683.10
HSK100A	5/8	4.00	1.693	1.654	9/16-18X1/2	536066	624.78
HSK100A	3/4	4.00	2.56	1.890	5/8-18X1/2	536070	624.78
HSK100A	3/4	6.00	1.969	1.890	5/8-18X1/2	536072	683.10
HSK100A	1	4.00	2.559	2.362	3/4-16X11/16 (2)	536074	624.78
HSK100A	1	6.00	2.559	2.362	3/4-16X11/16 (2)	536076	683.10
HSK100A	1-1/4	4.00	2.559	2.480	3/4-16X11/16 (2)	536078	624.78
HSK100A	1-1/4	6.00	2.559	2.480	3/4-16X11/16 (2)	536080	683.10

NMTB40 End Mill Holders



- All ground body, bore, nose, flange
- TIR, 0.0001" / 0.003mm OD to ID
- Certified Steel

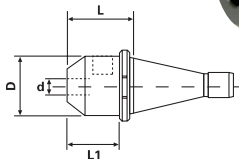


Taper	Hole Dia. (d)	Gauge Length (L)	L1	D	Set Screw	Code No.	Price \$
NMTB40	1/4	2.31	1.97	0.79	1/4-28	534000	165.33
NMTB40	5/16	2.31	1.18	0.87	5/16-24	534002	165.33
NMTB40	3/8	2.31	1.57	1.00	3/8-24	534004	165.33
NMTB40	1/2	2.31	2.56	1.38	7/16-20	534008	165.33
NMTB40	5/8	2.31	2.76	1.65	9/16-18	534010	165.33
NMTB40	3/4	2.31	2.76	1.89	5/8-18	534012	165.33
NMTB40	7/8	2.94	3.15	2.01	5/8-18	534014	165.33
NMTB40	1	3.37	3.54	2.36	3/4-16	534016	165.33
NMTB40	1-1/4	3.69	3.54	2.48	3/4-16	534018	165.33
NMTB40	1-1/2	3.95	2.95	2.99	3/4-16	534019	170.14

NMTB50 End Mill Holders



- All ground body, bore, nose, flange
- TIR, 0.0001" / 0.003mm OD to ID
- Certified Steel



Taper	Hole Dia. (d)	Gauge Length (L)	L1	D	Set Screw	Code No.	Price \$
NMTB50	1/4	2.75	1.57	0.79	1/4-28	534020	227.43
NMTB50	3/8	2.75	1.57	1.00	3/8-24	534022	227.43
NMTB50	1/2	2.75	1.50	1.38	7/16-20	534026	227.43
NMTB50	1/2	4.50	1.50	1.38	7/16-20	534028	238.67
NMTB50	5/8	2.75	1.77	1.65	9/16-18	534030	227.43
NMTB50	3/4	2.88	1.77	1.89	5/8-18	534034	227.43
NMTB50	3/4	4.50	2.76	1.89	5/8-18	534036	238.67
NMTB50	7/8	2.88	2.17	2.01	5/8-18	534038	236.11
NMTB50	1	3.50	2.36	2.36	3/4-16	534042	243.01
NMTB50	1-1/4	3.50	2.56	2.48	3/4-16	534046	272.70
NMTB50	2	4.69	4.13	3.74	1-14	534054	325.51