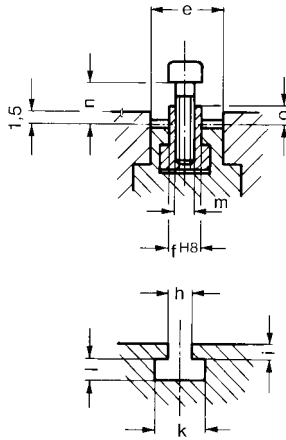




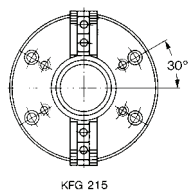
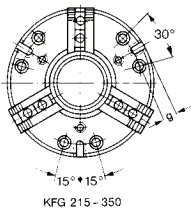
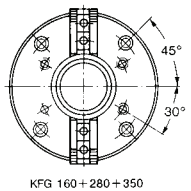
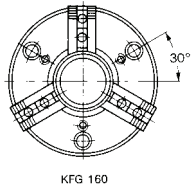
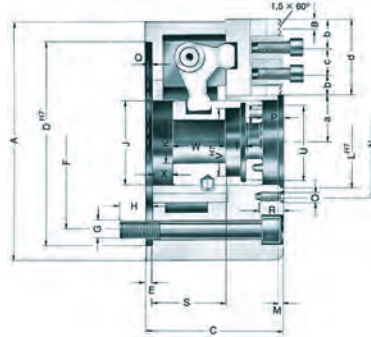
KFG 2 & 3-Jaw Lever Type Power Chucks With 60° Serrations



Type 522-05 2-Jaw
Type 532-05 3-Jaw

A highly versatile chuck with large through hole, suitable for both bar work and chucking the most varied parts. Toggle joint levers convert the axial operating force into radial jaw movements.

- Long jaw movement



Size		160	215	280	350
2-Jaw Rohm ID No.		020686	020687	020688	020689
Sowa Code No.		389820	389821	389822	389823
Price \$		10,899.33	13,099.90	16,728.19	24,622.80
3-Jaw Rohm ID No.		020666	020667	020668	020669
Sowa Code No.		389824	389825	389826	389827
Price \$		12,832.29	16,894.02	22,842.04	35,880.86
Jaw travel	A	160	215	280	350
	B	16	20	25	25
	C	79	92	116.2	134.7
	D ^{H7}	140	190	255	320
	E	4.2	4.2	5.7	5.7
	F	104.8	133.4	133.4	171.4
	G	3 x M10	6 x M12	6 x M12	6 x M16
2-Jaws	G	4 x M10	4 x M12	4 x M12	4 x M16
	H	20	25	25	35
	J	54	74	102	135
	K	26	45.5	66.5	90.5
	L ^{H7}	66	80	105	140
	M	2.5	2.5	2.5	2.5
	N	76	90	120	156
	O	M6	M8	M8	M10
	P	14	16.5	18.7	13.1
	Q	3.2	3.7	3.2	4.1
	R	13	15	15	20
Draw head stroke	min./max.	S	19.8/39.8	25.3/50.3	28.8/63.8
	T		8	12	18
	U		M46 x 1.25	M65 x 1.25	M90 x 1.25
	V ^{H7}		43	62	87
	W		23	29	32
	min./max.	a	23/39	31.5/51.5	47.5/72.5
		b	8	10	13
	min./max.	c	16/41	20/46	26/54
		d	57	66	80
		e	28	35	45
		f ^{H8}	11	14	20
		g	-	35	63
		h	-	16	16
		i	--	10	10
		k	--	24	24
		l	--	10	10
		m	M8	M10	M12
		n	7.5	8.5	13
		o	1.5	1.5	2.5
Max. swing of jaws	mm	242	295	380	480
Max draw bar pull 2-jaws	kN	16	22.5	29	35
Max draw bar pull 3-jaws	kN	24	33.9	43	52
Max. total clamping force approx. 2-jaws	kN	14	20	28	44
Max. total clamping force approx. 3-jaws	kN	21	30	42	66
Max. admissible speed	min. ⁻¹	3400	2700	1950	1800
Moment of inertia J 3-jaws	kgm ²	0.031	0.11	0.425	1.22
Weight without jaws approx. 3-Jaws	kg	9.3	17	41	75