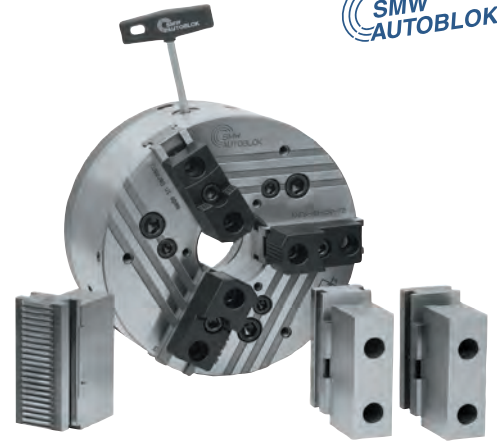
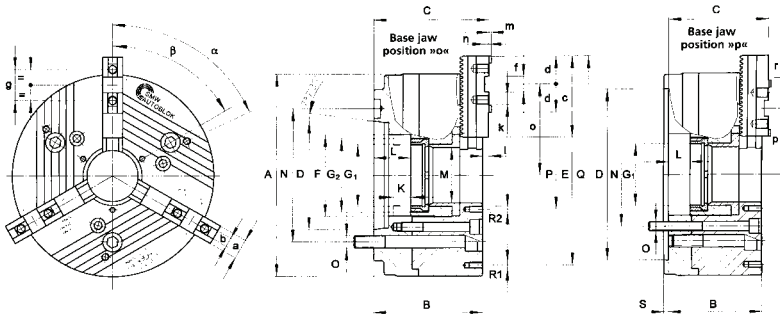


KNCS-N Quick Jaw Change



Jaw position: open position for O.D. clamping



Main Dimensions and Technical Data Quick Jaw Change

Subject to technical changes

| Type KNCS-N | 325-104 | | | | 400-128 | | | | 500-155 | | | 630-165 | | |
|-------------|------------------------------------|------------------|---------------|-----------|-----------|-----------|-------------|-----------|-----------|-----------|-------------|-----------|-------------|-----|
| Code No. | 485200 | 485205 | 485210 | 485215 | 485220 | 485225 | 485230 | 485235 | 485240 | 485245 | 485250 | 485255 | | |
| Price \$ | 20,589.65 | 20,589.65 | 19,508.83 | 19,508.83 | 27,426.91 | 27,426.91 | 32,053.33 | 32,053.33 | 35,587.03 | 40,145.33 | 40,145.33 | 66,759.16 | | |
| Mounting | Dim. | Z220 | Z300 | A8 | A11 | Z300 | Z380 | A11 | A15 | Z380 | A11 | A15 | Z380 | |
| | A | 324 | | | | 400 | | | | 500 | | | 630 | |
| | B | 130 | 130 | 149 | 151 | 140 | 140 | 161 | 163 | 174 | 195 | 197 | 174 | |
| | C | 139.2 | 139.2 | 158.2 | 160.2 | 149.2 | 149.2 | 170.2 | 172.2 | 184 | 205 | 207 | 184 | |
| H6 | D | 220 | 300 | 139.73 | 196.88 | 300 | 380 | 196.88 | 285.77 | 380 | 196.88 | 285.77 | 380 | |
| | E | | 268 | | | | 330 | | | | 420 | | 585 | |
| | F | | 144 | | | | 180 | | | | 207 | | 217 | |
| | G1 | | M115 x 2/22 | | | | M138 x 2/22 | | | | M165 x 2/25 | | M175 x 2/25 | |
| | G2 | | M132 x 2/25 | | | | M160 x 2/25 | | | | M185 x 2/28 | | M195 x 2/28 | |
| | K | | 25/28 | | | | 32 | | | | 42 | | 42 | |
| | L | 28 | 28 | 47 | 49 | 32 | 32 | 53 | 55 | 42 | 63 | 65 | 42 | |
| | M | | 104 | | | | 128 | | | | 155 | | 165 | |
| | N | 171.4 | 235 | 171.4 | 235 | 235 | 330.2 | 235 | 330.2 | 330.2 | 235 | 330.2 | 330.2 | |
| | O | M16 | M20 | M16 | M20 | M20 | M24 | M20 | M24 | M24 | M20 | M24 | M24 | |
| | P | | 130 | | | | 152 | | | | 180 | | 195 | |
| | Q | | 385 | | | | 452 | | | | 552 | | 643 | |
| | R1 | | M10/16 | | | | M12/18 | | | | M16/25 | | M16/25 | |
| | R2 | | M10/16 | | | | M12/18 | | | | M12/18 | | M12/18 | |
| | S | | 6 | | | | 8 | | | | 8 | | 8 | |
| f7 | a | | 32 | | | | 32 | | | | 45 | | 45 | |
| | b | | 12 | | | | 12 | | | | 18 | | 18 | |
| | c | | 115 | | | | 125 | | | | 160 | | 200 | |
| | d | | 36 | | | | 43 | | | | 50 | | 50 | |
| H7 | f | | 20 | | | | 26 | | | | 30 | | 30 | |
| | g | | 40 | | | | 54 | | | | 60 | | 60 | |
| | k | | M12/17 | | | | M12/17 | | | | M16/34 | | M16/34 | |
| | l | | 9.3 | | | | 9.3 | | | | 10 | | 10 | |
| | m | | 3 | | | | 3 | | | | 4 | | 4 | |
| | n | | 6 | | | | 7 | | | | 9 | | 9 | |
| | o | | 155.7/106.2 | | | | 182.3/121.8 | | | | 225/141 | | 270.5/179.5 | |
| | p | | 111.7/62.2 | | | | 143.3/82.2 | | | | 164/80 | | 170.5/79.5 | |
| | r | | 5.5 | | | | 5.5 | | | | 7 | | 7 | |
| | r | | 49.5 | | | | 60.5 | | | | 70 | | 91 | |
| | teeth | | 9 | | | | 11 | | | | 12 | | 13 | |
| | α° | | 60 | | | | 60 | | | | 60 | | 60 | |
| | β° | | 60 | | | | 60 | | | | 60 | | 60 | |
| | Stroke/jaw at piston stroke K | mm | 7.0 | | 25 | | | | | | | | | |
| | Stroke/jaw at piston stroke K max. | mm | 8.0 | | 28 | 8.0 | | | 32 | 10.0 | 42 | | 10.0 | |
| | Max. actuating force 3-Jaw chuck | KN | 95 | | | | 115 | | | 120 | | | 120 | |
| | Max. total grip force 3-Jaw chuck | KN | 180 | | | | 240 | | | 250 | | | 250 | |
| | Max. speed 3-Jaw chuck | rpm | 4000 | | | | 3500 | | | 2200 | | | 1700 | |
| | Mass without top jaws | kg | 65 | 65 | 68 | 68 | 111 | 111 | 116 | 116 | 225 | 231 | 231 | 390 |
| | Moment of Inertia | kgm ² | 1.2 | | | | 2.5 | | | 6.5 | | | 18 | |
| | Recommended closed centre cylinder | Type | SIN-S 150/200 | | | | SIN-S 200 | | | | SIN-S 200 | | SIN-S 200 | |
| | Recommended open centre cylinder | Type | VNK 250-110 | | | | VNK 320-127 | | | | VSG 450-165 | | VSG 450-165 | |

Workholding, Clamping & Fixturing