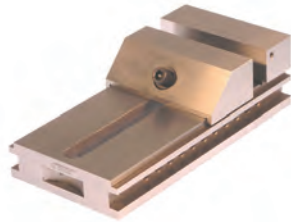


Suburban Precision Vises



Angled channel provides extra jaw capacity. Jaw can be opened or closed without unbolting from work surface. Squareness and parallelism within 0.0002". Models V-411 & V-612 squareness and parallelism within 0.0003". V-237 has recessed pockets at both ends for clamping, vees machined in face of movable jaw and 12 stepped channel which eliminates side holes.



Model No.	Dimensions (in.)	Jaw Capacity (in.)	Code No.	Price \$
V-225	2 x 5-1/2 x 2	3-1/8	251200	919.30
V-237	3 x 7-1/2 x 2-3/8	4	251206	1,175.95
V-411	4 x 11 x 3	7-1/2	251216	2,047.40
V-612	6 x 12 x 3-1/2	8-1/2	251224	3,040.65

Toolmaker Vises

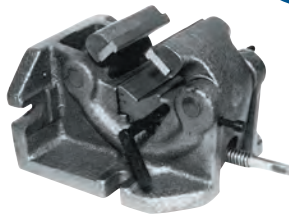
- Solid one piece body
- High quality alloy steel, surface hardened to 58-62 HRC
- Parallelism: 0.005mm / 100mm
- Perpendicularity: 0.005mm
- Angled centre channel provides extra jaw capacity



Model No.	Length (mm)	Width (mm)	Jaw Opening (mm)	Jaw Height (mm)	Code No.	Price \$
QKG50	140	50	65	25	230815	138.58
QKG63	175	63	85	32	230820	169.47
QKG73	190	73	100	35	230825	183.86
QKG88	235	88	125	40	230830	282.17
QKG100	245	100	125	45	230835	372.48
QKG125	285	125	160	50	230836	562.10

Milling Machine Vises For Round Workpieces

These vises are used for clamping round workpieces with diameters from 2" to 6.3" for use on a milling machine or drill press.



Jaw Width	Shaft Capacity	Weight (lb)	Code No.	Price \$
6	2 to 6.3	165	401003	2,965.01

EDM Tool Maker Vises

- Parallelism: ±0.002mm / 100mm
- Squareness: ±0.002mm / 100mm
- Stainless Steel
- VSTV-50W designed specifically for wire cutter use



VSTV-50W



VSTV-100W



VSTV-150W

Model	Max Opening	Thickness	Jaw Depth	Weight (kg)	Code No.	Price \$
VSTV-50W	55mm	27mm	25mm	1.0	230840	1,192.21
VSTV-100W	100mm	24mm	50mm	4.9	230842	3,092.65
VSTV-150W	150mm	24mm	60mm	6.8	230844	6,193.18

Heavy Duty Bench Vises With Swivel



Manufactured from high quality grey iron castings - a very strong material with excellent shock absorbing capacity and immense strength under compression. These rigid and robust vises, machined to close tolerances, are designed for smooth operation and reliability.



Jaw Width (in.)	Max. Jaw Opening (mm)	Throat Depth (mm)	Code No.	Price \$
4	127	55	231400	309.97
5	152	70	231405	449.60
6	178	80	231410	599.47

Drill Press Vises

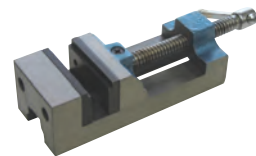
- High tensile iron casting
- Cold rolled screw thread
- Plain jaws of special steel



Jaw Width (in.)	Opening (in.)	Jaw Depth (in.)	Weight (lb)	Code No.	Price \$
3	3	1-1/8	6	370206	105.09
4	4	1-3/8	10	370211	136.89
5	5	1-1/2	17-1/2	370216	241.33
6	6	1-1/2	23	370221	280.70

Drill Press Vise P250

- High tensile iron casting
- Jaw plates - one grooved and one plain
- Accurate machining and assembling
- Four sides and one end machined



Jaw Width (in.)	Jaw Depth (in.)	Opening (in.)	Length (in.)	Weight (lb)	Code No.	Price \$
2-1/2	1-1/2	2-9/16	7-1/4	5-1/2	370226	139.47