

## Drill Press Vises P350 & P400

- Rugged 3 inch and 4 inch
- Precision cut ACME thread screw
- Hexagonal screw head for tight clamping



Jaw Width	Jaw Depth	Opening (in.)	Length	Weight (lb)	Code No.	Price \$
3	1-3/4	3	9-1/4	9-3/4	370236	161.98
4	1-3/4	4	10-3/4	17	370241	252.72

## Unigrip Drill Press Vises

- Manufactured from graded cast iron, these vises have a precision ground base and vise bed for smooth lateral movement of the movable jaw.
- Longitudinal and transversal prisms in the fixed jaw allow for firm gripping of round jobs of different sizes both horizontally and vertically. Special seat in jaws facilitates retaining of flat workpieces.
- Equipped with a convenient unigrip mechanism which increases the scope of application of this range of vises. Spindle moves inside the hollow hand grip allowing the vise to be used at a location away from the table edge.
- Available with 3 mounting options via 2 additional precisely ground surfaces: end face and side face. This allows for drilling along all axes with a single setting of the job and holding of long workpieces which are difficult to manage in regular vises.



Model No.	Jaw Width	Opening (in.)	Jaw Depth	Code No.	Price \$
DPV/UG-75	3	2-3/4	13/16	370925	179.97
DPV/UG-100	4	3-1/2	13/16	370930	209.76
DPV/UG-125	5	4-15/32	1-3/8	370935	319.77
<b>3 WAY Drill Press Vise</b>					
DPV/UG/3/100	4	3-1/2	13/16	370940	284.80

## SG Iron Unigrip Drill Press Vise

- Manufactured from SG Iron, making them amongst the strongest vises in the market - virtually unbreakable
- Only drill vise that can also be used as a milling vise
- Equipped with long mounting slots for easy adjustment on the machine table
- Fixed jaw has horizontal and vertical V slots for holding round jobs
- Both jaws have a seat for retaining flat and low height workpieces
- Movable steel jaw is supported by a jaw seat imparting rigidity and further strength



Model No.	Jaw Width	Opening (in.)	Code No.	Price \$
DPV/SG-80	3-3/16	3-9/64	370945	210.15

## Piston Vises

- Easy and speedy
- Quick grip drill press vises



Model No.	Jaw Width	Jaw Depth	Opening (in.)	Code No.	Price \$
V-75	3	1-1/4	3	326485	574.78
V-100	4	1-15/16	4-11/16	326490	683.70

## "G" Clamps

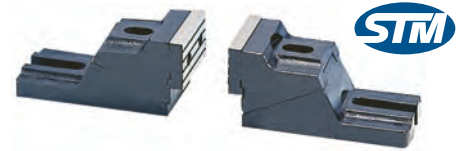
- SG iron with a tensile strength over 60,000 psi
- Powder coated finish
- Swiveling pad
- Handle designed to bend before the frame can be overstressed



Model	Clamp Capacity (in.)	Throat Depth (in.)	Load Capacity (lb)	Code No.	Price \$
GCL/13D/100	4	2-11/32	1200	231442	43.70
GCL/13D/150	6	3	1400	231443	55.63
GCL/13D/200	8	3-1/8	1700	231444	70.45
GCL/13D/250	10	3-1/2	2200	231445	98.35

## Free Style Vises

- Free style clamping
- Light duty



Model	Dimensions WxHxL	Clamping Capacity HxL	Weight (2pcs) (kg)	Code No.	Price \$
FV-350	75x67x150mm	140x350mm	7.5	326450	577.95
FV-450	100x90x200mm	180x450mm	14	326455	687.63
FV-550	125x120x250mm	250x550mm	23	326460	990.14

## Heavy Duty Free Style Vises

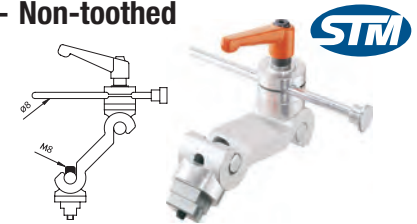
- Free style clamping
- Heavy duty



Model	Height (mm)	Width (mm)	Length (mm)	Weight (2pcs) (kg)	Code No.	Price \$
SV-62	59.5-80.5	64	139	5.8	326465	802.34
SV-85	86-110	86.5	192	11	326470	1,275.16
SV-125	84-117	127	218	21	326475	1,774.77

## U/N Work Stopper — Non-toothed

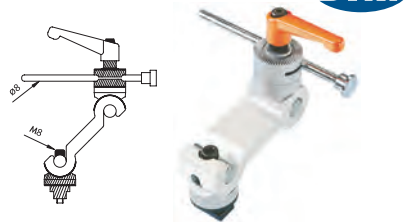
- Locking lever can be rotated a full 360°
- Arm made of anodized aluminum
- Steel hinge pins



Model	T-Slot Size	Stop Pin Length	Height	Arm Length	Code No.	Price \$
WVS-123	16mm	160mm	200mm	132mm	326440	572.91

## U/N Work Stopper — Toothed

- Locking lever can be rotated a full 360°
- Arm made of anodized aluminum
- Steel hinge pins
- Slip adjustment of the stop pin before it is locked into place



Model	T-Slot Size	Stop Pin Length	Height	Arm Length	Code No.	Price \$
WVS-125	16mm	160mm	200mm	132mm	326445	600.76

## "C" Clamps

- Drop forged steel construction for maximum clamping power
- High strength ACME screw with black oxide plating for corrosion resistance



Opening Cap.	Throat Depth	Spindle Dia.	Clamping Force (lb)	Dynamic EDP	Code No.	Price \$
0-2	2-1/4	15/32	2700	D090001	861666	19.84
0-3	2-1/2	45/64	3000	D090002	866021	31.78
0-4	3-1/4	45/64	3700	D090003	861667	38.15
0-8	5	45/64	5200	D090005	865486	92.11
0-10	6	15/16	6000	D090006	866927	158.84
0-12	6-5/16	15/16	8000	D090007	866928	201.23