

40 Position Quick Change Tool Posts & Holders

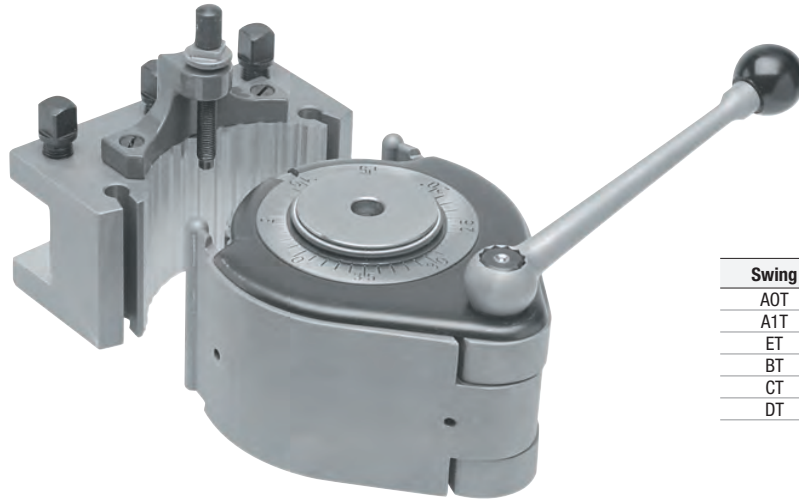
Sets Include:

- 1 piece toolpost
- 3 piece "D" holder
- 1 piece "B" holder

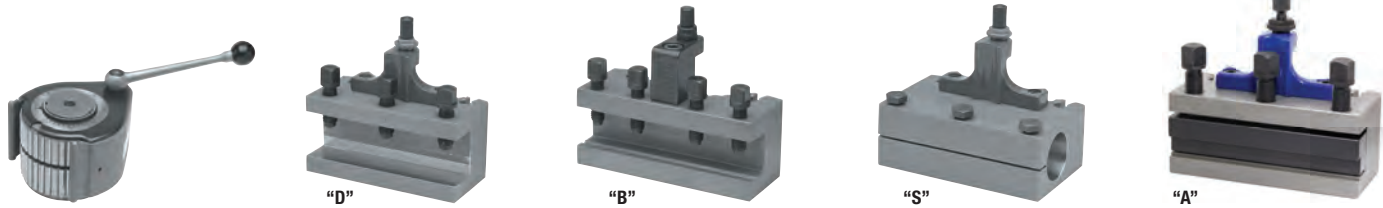
Tool Post Sets



Sets (5 piece)	Code No.	Price \$
A1T	388405	1,316.92
E5T	388410	1,939.47
B2T	388415	2,008.19
C3T	388420	3,561.70
D4T	388425	6,237.26



Swing	
AOT	Up to 9"
A1T	6" - 13"
ET	10" - 18"
BT	13" - 20"
CT	18" - 30"
DT	22" - 35"



Quick Change Tool Posts & Holders



Toolpost			Toolholder "D" Flat				Toolholder "B" V-Groove				Toolholder "S" Boring Bar Holder				Toolholder "A" Part Off	
Toolholder	Code No.	Price \$	*NH	L	Code No.	Price \$	*NH	L	Code No.	Price \$	*D	L	Code No.	Price \$	Code No.	Price \$
Size			mm	mm			mm	mm			mm	mm				
AOT	388005	524.87	12	50	388010	158.82	12	50	388015	169.24	15	50	388020	240.84		
A1T	388035 ‡	658.99	20	80	388040 ‡	174.52	18	80	388045 ‡	185.21	30	80	388050	279.99	388055	396.75
E5T	388100 ‡	838.53	20	100	388105	234.54	30	100	388115 ‡	272.28	30	100	388120	345.04	388130	451.29
			25	100	388110 ‡	301.17					40	100	388125	362.23		
			25	120	388185 ‡	272.28										
			25	140	388190	324.12										
B2T	388180 ‡	958.06	32	120	388195	277.92	32	130	388205 ‡	310.81	40	120	388210	427.37	388215	507.30
			32	140	388200	356.03										
			32	150	388270	424.84										
			32	170	388275	483.30										
C3T	388265 ‡	1,796.48	40	150	388280 ‡	462.88	32	160	388295	495.80	40	150	388305	707.35	388315	599.46
			40	170	388285	525.64	40	170	388300 ‡	514.06	50	150	388310	742.77		
			45	170	388290	551.55										
D4T	388375 ‡	2,980.87	40	180	388380 ‡	786.20	50	180	388395 ‡	1,138.55	63	180	388400	1,204.66		
			50	180	388385	838.80										
			63	180	388390	914.68										

* Notch Height

* Notch Height

* Diameter

‡ Denotes items found in the sets listed above

Quick Change Tool Posts Parts



Toolholder Size	Square Head Screw	Cheese Head Screw	Adjusting Top	Height Adj. Nut	Height Adj. Screw
AOT	388501 5.76	388502 2.42	388503 10.77	388504 10.51	388505 5.85
A1T	388506 5.76	388507 2.42	388508 11.05	388509 10.51	388510 5.85
B2T	388516 10.54	388517 3.18	388518 17.56	388519 12.47	388520 8.19
C3T	388521 11.96	388522 6.38	388523 19.36	388524 13.98	388525 8.65
D4T	388526 16.72	388527 8.75	388528 27.12	388529 19.62	388530 12.97
E5T	388511 5.76	388512 3.18	388513 16.75	388514 10.51	388515 7.24