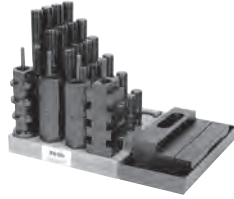


Te-Co Milling Machine Clamping Kits



- Bridgeport type milling machines use part no. 20506
- Versatility expanded when used with step block kits
- For material information see individual components
- 24 studs with flats of 4 each of: 3", 4", 5", 6", 7" and 8" long
- 1 holder (wooden base and metal tray)



Each Set Contains:

- 4 soft clamps – 6" long
- 1 T-nut and stud kit with includes: 4 coupling nuts, 4 flange nuts, 4 T-slot nuts, 1 T-slot cleaner

Table T-Slot Size	Stud Size	Te-Co Part No.	Code No.	Price \$
3/8	5/16-18	20501	608730	354.87
7/16	3/8-16	20502	608731	322.44
1/2	3/8-16	20503	608732	326.30
9/16	3/8-16	20504	608733	331.96
9/16	1/2-13	20505	608734	362.53
5/8	1/2-13	20506	608735	372.12
11/16	1/2-13	20507	608736	375.84
11/16	5/8-11	20508	608737	444.57
3/4	5/8-11	20509	608738	448.29
13/16	5/8-11	20510	608739	463.54
13/16	3/4-10	20511	608740	555.11
7/8	3/4-10	20512	608741	564.70
1	3/4-10	20513	608742	570.49

Te-Co T-Nut And Stud Sets



Each set includes:

- 24 studs 4 each 3, 4, 5, 6, 7, 8" lengths
- 4 coupling nuts
- 1 T-slot cleaner
- 4 flange nuts
- 1 holder
- 4 T-slot nuts

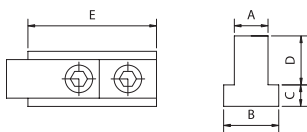


Model No.	Table T-Slot Size	Stud Size	Code No.	Price \$
375-TS	3/8	5/16-18	607066	157.73
437-TS	7/16	3/8-16	607068	160.84
500-TS	1/2	3/8-16	607070	166.98
560-TS	9/16	3/8-16	607072	170.43
562-TS	9/16	1/2-13	607074	182.44
625-TS	5/8	1/2-13	607076	188.44
686-TS	11/16	1/2-13	607078	191.68
687-TS	11/16	5/8-11	607080	220.73
750-TS	3/4	5/8-11	607082	245.99
8125-TS	13/16	5/8-11	607084	266.96
812-TS	13/16	3/4-10	607086	354.66
875-TS	7/8	3/4-10	607088	361.08
134-TS	1	3/4-10	607090	369.84
1000-TS	1	7/8-9	607092	594.64
1062-TS	1-1/16	7/8-9	607094	599.89
1125-TS	1-1/8	7/8-9	607096	624.17
10621-TS	1-1/16	1-8	607098	659.64

T-Slot Clamp Sets



- 1 set consists of 4 vises
- For thin or small workpieces
- Good clamping force
- Quick setting
- Suitable for light duty cutting on milling, drilling, or EDM machines



Model	A	B	C	D	E	Code No.	Price \$
CK-3712	11.5	18	7	16	42	333920	280.75
CK-3714	13.5	22	8	18	42	333922	301.41
CK-3716	15.5	25	10	20	45	333924	334.23
CK-3718	17.5	28	11	24	45	333926	344.37
CK-3720	19.5	32	12	26	53	333928	478.57

Parallel Clamps



- Designed for maximum strength and rigidity
- Ideal for various toolmaking and machine set-ups
- Made of alloy steel, black oxide finish
- Hardened and tempered jaws
- Screw heads drilled allowing use of pin for tightening
- All sizes equipped with spring clip and retaining groove



BLACK OXIDE

Capacity	Jaw Length	Model	Code No.	Price \$
3-1/2"	5"	PC/5	231294	56.50
6"	8"	PC/8	231298	142.48

Pivot Clamp (Pair)



- Adjustable clamping height
- Brass plate under the clamp arm to protect the workpiece
- Spherical flange nut assures material will be tightly clamped
- Clamping arm is forged



Table T-Slot Size (in.)	Stud Size (in.)	Code No.	Price \$
Inch			
5/8	1/2 - 13 x 5	326750	147.90
3/4	5/8 - 11 x 6	326755	178.82
Metric			
16mm	M12 x 5	326745	278.47
20mm	M16 x 6	326746	302.91
22mm	M20 x 7	326747	403.02
28mm	M24 x 8	326748	621.68

U-Clamps (Pair)



- Material: S45C
- Adjustable clamping height

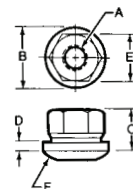


Model	Dimensions (LxWxH)	Stud Size	Weight 2pcs (kg)	Code No.	Price \$
VCA-404	105x45x35mm	M12x5"	1.5	326740	236.05
VCA-405	126x54x40mm	M16x6"	2.6	326741	281.15
VCA-406	155x58x55mm	M20x7"	4.2	326742	359.98
VCA-408	190x70x65mm	M24x8"	8.2	326743	578.51

Spherical Flange (Collar) Nuts



- Case hardened
- Black oxide finish



BLACK OXIDE

Model No.	Thread A	B	C	D	E	F	Code No.	Price \$
SFN-14	1/4-20	5/8	5/16	3/32	1/2	3/4	607186	5.31
SFN-56	5/16-18	3/4	3/8	1/8	9/16	1-1/4	607188	5.60
SFN-38	3/8-16	7/8	1/2	1/8	11/16	1-1/4	607190	5.74
SFN-76	7/16-14	1	9/16	5/32	3/4	1-1/2	607192	6.17
SFN-12	1/2-13	1-1/8	11/16	3/16	7/8	1-1/2	607194	6.46
SFN-58	5/8-11	1-3/8	13/16	3/16	1-1/16	1-3/4	607196	8.35
SFN-34	3/4-10	1-5/8	1	1/4	1-1/4	2-1/4	607198	11.69
SFN-78	7/8-9	1-3/4	1-1/8	1/4	1-7/16	2-1/2	607200	15.80
SFN-10	1-8	2	1-1/4	1/4	1-5/8	2-3/4	607202	20.04
SFN-114	1-1/4-7	2-1/2	1-1/4	1/4	1-13/16	3	607206	73.55