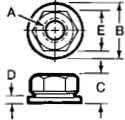


Workholding, Clamping & Fixturing

Flange (Collar) Nuts

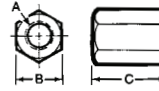
- UNC**
- Case hardened
 - Black oxide finish



Model No.	Thread A	B	C	D	E	Te-Co Code No.	Price \$	STM Code No.	Price \$
Inch									
FN-14	1/4-20	5/8	5/16	3/32	1/2	607164	3.92	-	-
FN-56	5/16-18	3/4	3/8	1/8	9/16	607166	4.35	-	-
FN-38	3/8-16	7/8	1/2	1/8	11/16	607168	4.64	333652	3.41
FN-76	7/16-14	1	9/16	5/32	3/4	607170	5.22	-	-
FN-12	1/2-13	1-1/8	11/16	3/16	7/8	607172	5.22	333654	4.40
FN-58	5/8-11	1-3/8	13/16	3/16	1-1/16	607174	6.71	333656	5.21
FN-34	3/4-10	1-5/8	1	1/4	1-1/4	607176	11.29	333658	8.41
FN-78	7/8-9	1-3/4	1-1/8	1/4	1-7/16	607178	17.47	-	-
FN-10	1-8	2	1-1/4	1/4	1-5/8	607180	21.40	333662	17.82
FN-114	1-1/4-7	2-1/2	1-1/4	1/4	1-13/16	607184	45.61	-	-
Metric									
61601	M6 x 1.0	16	8	2	10	608765	5.16	-	-
61602	M8 x 1.25	19	10	2.5	13	608766	5.31	-	-
61603	M10 x 1.5	22	13	3	17	608767	6.60	-	-
61604	M12 x 1.75	27	17	4	19	608768	7.18	-	-
61605	M16 x 2.0	33	21	5	24	608769	8.65	-	-
61606	M20 x 2.5	40	25	6	30	608770	12.14	-	-
61607	M24 x 3.0	49	32	7	36	608771	20.01	-	-

Coupling (Extension) Nuts

- Case hardened
- Black oxide finish

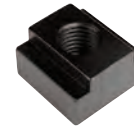
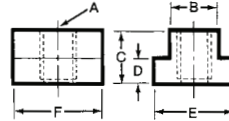


Model No.	Thread A (in/mm)	B (in/mm)	C (in/mm)	Te-Co Code No.	Price \$	STM Code No.	Price \$
Inch							
CN-14	1/4-20	1/2	5/8	607208	5.06	-	-
CN-56	5/16-18	9/16	7/8	607210	5.52	-	-
CN-38	3/8-16	11/16	1	607212	5.96	333672	4.25
CN-76	7/16-14	3/4	1-1/4	607214	6.86	-	-
CN-12	1/2-13	7/8	1-1/4	607216	7.30	333674	5.14
CN-58	5/8-11	1-1/16	1-5/8	607218	10.58	333676	7.49
CN-34	3/4-10	1-1/4	1-7/8	607220	14.49	333678	10.37
CN-78	7/8-9	1-7/16	2-1/4	607222	21.94	-	-
CN-10	1-8	1-5/8	2-1/2	607224	22.63	-	-
Metric							
61501	M6 x 1.00	13	16	608772	8.20	-	-
61502	M8 x 1.25	14	19	608773	8.20	-	-
61503	M10 x 1.5	16	24	608774	8.79	-	-
61504	M12 x 1.75	22	32	608775	11.33	-	-
61505	M16 x 2.0	27	40	608776	14.63	-	-
61506	M20 x 2.5	32	51	608777	20.15	-	-
61507	M24 x 3.0	38	64	608778	27.74	-	-

T-Slot Nuts — Inch

Last thread incomplete to prevent stud from turning through bottom of nut into machine table.

- Case hardened
- Black oxide finish
- Tapped through T-nuts available upon request



Model No.	Table Slot	Thread A	B	C	D	E	F	Te-Co Code No.	Price \$	STM Code No.	Price \$
Inch											
373	5/16	1/4-20	0.304	1/4	0.177	9/16	9/16	607100	6.17	-	-
374	3/8	1/4-20	0.367	3/8	0.224	9/16	9/16	607102	6.32	-	-
375	3/8	5/16-18	0.367	3/8	0.240	5/8	7/8	607104	5.31	-	-
437	7/16	3/8-16	0.427	1/2	0.208	11/16	7/8	607106	5.31	333604	3.90
500	1/2	3/8-16	0.490	1/2	0.271	7/8	7/8	607108	5.31	333606	3.90
562	9/16	3/8-16	0.552	5/8	0.333	7/8	1-1/8	607110	6.03	333608	4.49
501	1/2	7/16-14	0.490	1/2	0.271	7/8	7/8	607112	7.31	-	-
502	1/2	7/16-14	0.490	3/8	0.208	3/4	7/8	607114	7.04	-	-
563	9/16	1/2-13	0.552	5/8	0.333	7/8	1-1/8	607116	5.88	333614	4.37
625	5/8	1/2-13	0.615	5/8	0.333	1	1-1/8	607118	6.60	333616	4.96
626	5/8	1/2-13	0.615	3/4	0.365	1-1/8	1-1/8	607120	8.75	-	-
687	11/16	1/2-13	0.677	3/4	0.427	1-1/8	1-1/4	607122	7.18	333618	5.33
750	3/4	1/2-13	0.740	3/4	0.458	1-1/4	1-1/4	607124	9.76	-	-
688	11/16	5/8-11	0.677	3/4	0.427	1-1/8	1-1/4	607128	7.60	333620	5.62
751	3/4	5/8-11	0.740	3/4	0.458	1-1/4	1-1/4	607130	7.89	333622	5.91
812	13/16	5/8-11	0.802	1	0.552	1-1/4	1-1/2	607132	11.48	333624	8.53
813	13/16	3/4-10	0.802	1	0.552	1-1/4	1-1/2	607134	12.63	333626	9.41
875	7/8	3/4-10	0.865	1	0.552	1-1/2	1-1/2	607136	13.63	333628	10.18
1000	1	3/4-10	0.990	1	0.615	1-5/8	1-3/4	607138	15.53	333630	14.62
1000-34	1	3/4-10	0.990	1-1/2	0.750	1-3/4	1-3/4	607140	23.12	-	-
1010	1-1/16	3/4-10	1.052	1-1/8	0.677	1-5/8	2	607142	18.08	333632	17.82
1001	1	7/8-9	0.990	1	0.615	1-5/8	1-3/4	607144	16.35	-	-
1062	1-1/16	7/8-9	1.052	1-1/8	0.677	1-5/8	2	607146	21.53	-	-
1125	1-1/8	7/8-9	1.115	1-1/2	0.740	1-3/4	2	607148	27.67	-	-
1063	1-1/16	1-8	1.052	1-1/8	0.677	1-5/8	2	607150	39.88	333636	29.70
1126	1-1/8	1-8	1.115	1-1/2	0.740	1-3/4	2	607152	39.88	-	-
1250	1-1/4	1-8	1.237	1-1/4	0.865	2	2	607154	40.50	-	-
1310	1-5/16	7/8-9	1.302	1-1/4	0.927	2	2	607156	40.92	-	-
1311	1-5/16	1-8	1.302	1-1/4	0.927	2	2	607158	35.88	-	-
1375	1-3/8	1-1/4-7	1.362	1-3/4	1.115	2-1/2	2-1/2	607162	76.52	-	-
Metric											
61401	8	5/16	M6 x 1.0	10	6	14	19	608750	7.60	-	-
61402	10	7/16	M6 x 1.0	11	6	16	22	608751	8.75	-	-
61403	10	7/16	M8 x 1.25	11	6	16	22	608752	8.75	-	-
61404	12	1/2	M10 x 1.5	13	7	19	22	608753	8.75	-	-
61405	14	9/16	M10 x 1.5	16	9	22	29	608754	10.34	-	-
61406	14	9/16	M12 x 1.75	16	9	22	29	608755	10.34	-	-
61407	16	5/8	M12 x 1.75	16	9	25	29	608756	10.34	-	-
61408	17	11/16	M12 x 1.75	19	11	29	32	608757	12.34	-	-
61409	18	3/4	M16 x 2.0	19	11	29	32	608758	12.34	-	-
61410	21	13/16	M16 x 2.0	25	14	32	38	608759	13.50	-	-
61411	22	7/8	M20 x 2.5	25	14	35	38	608760	14.90	-	-
61412	27	1-1/16	M24 x 3.0	29	18	41	51	608761	21.80	-	-
61413	33	1-5/16	M24 x 3.0	32	24	51	51	608762	27.12	-	-