

Pullers



- Spring-loaded jaws for quick and easy set-up for different applications
- Two or three jaw design for added flexibility
- Solid Chrome-Vanadium forged construction for increased durability
- Heavy duty forcing screw with live centre for strong even pulls



Pulling Cap.	Max. Reach (in.)	Max. Spread (in.)	Dynamic EDP	Code No.	Price \$
2 tons	3-1/2	4	D093001	865873	154.56
5 tons	5-1/4	7	D093002	866076	302.48

9" Locking Chain Clamp



- Flexible heavy duty chain adjusts quickly around any shape providing a secure hold even in hard to reach areas



Weight (lbs)	Overall Length (in.)	Dynamic EDP	Code No.	Price \$
1.57	9	D055311	865877	54.48

Suburban Cube

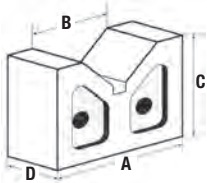


- Solid, one-piece hardened steel construction providing durable strength
- Ground on six sides with the ground surfaces flat, the cube is square and parallel within 0.0002"



Model No.	Dimensions	Code No.	Price \$
C-36	3-1/2 x 6 x 3	251302	887.40

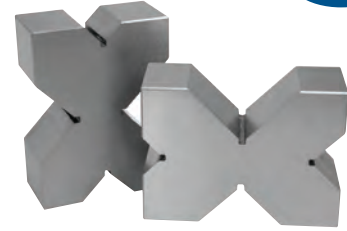
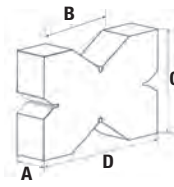
Vee Blocks — Cast Iron



- Made from close grained cast iron, these blocks are precisely ground and machined square and parallel
- The vee's are 90° centered and true
- The blocks are manufactured and supplied in numbered pairs and come in handy for holding large jobs where clamping is not necessary
- Squareness and Parallelism of Vee grooves: within 0.0012" (30 microns)

Width (A) (in.)	Vee Width (B) (in.)	Height (C) (in.)	Thickness (D) (in.)	Model No.	Code No.	Price \$
3	1-3/4	2-3/8	1-5/16	VB/C-3	231102	95.69
4	2-3/16	2-9/16	1-9/16	VB/C-4	231104	124.16
5	2-7/16	3-1/8	2	VB/C-5	231106	169.29
6	3-1/16	3-1/2	2-7/16	VB/C-6	231108	270.68
8	4-1/2	5-1/2	4	VB/C-8	231110	656.37
10	5	6-1/2	5	VB/C-10	231112	1,164.06
12	5-1/8	8	6	VB/C-12	231114	1,705.55

4 Way Vee Blocks — Cast Iron



- Made from close grained cast iron, these Vee Blocks are precisely ground and machined square and parallel
- Each Block incorporates four different sized vee's thereby supporting a wide range of sizes
- Manufactured and supplied in matched and numbered pairs, these are very useful for marking and checking of cylindrical parts
- The larger sizes incorporate a cavity on either side for convenience in handling during usage

Thickness (A) (mm)	Block Width (D) (mm)	Height (C) (mm)	Vee Cap. (B) (mm)	Model No.	Code No.	Price \$
35	95	70	20 x 30 x 40 x 50	VB/QD/95-70-35	231116	166.56
30	100	100	20 x 30 x 40 x 50	VB/QD/100-100-30	231118	179.94
35	120	120	30 x 40 x 50 x 60	VB/QD/120-120-35	231120	245.00

Vee Blocks — Cast Iron



Supplied in matched and numbered pairs, these vee blocks are manufactured from high quality castings, properly seasoned against distortion, and are accurately machined square and parallel. The 90° vee is centered and true.



Vee Width (in.)	Vee Depth (in.)	Width (in.)	Height (in.)	Thickness (in.)	Weight (lb)	Code No.	Price \$
1	1/2	2	1-1/4	1-7/8	0.9	370556	75.25
1-3/4	7/8	3	2-3/8	2-5/8	2.5	370561	115.34
2-1/8	1	4	2-5/8	3-1/4	5	370566	154.82
2-3/8	1-1/8	5	3-1/8	4	8	370571	233.59
3-1/8	1-9/16	6	3-1/2	5	15	370576	289.57
3-5/8	1-13/16	7	4-1/2	6	28	370581	424.47
4-1/2	2-1/4	8	5-1/2	8	44	370586	575.65
5	2-1/2	10	6-5/8	10	69	370591	906.42
5-1/8	2-1/2	12	8	12	132	370596	1,760.71

Magnetic V-Blocks



Used to hold cylindrical workpieces for grinding. Will hold both itself and the work on any flat ferrous surface, including a permanent magnet chuck (without energizing the chuck).

There are two vees:

- The smaller for workpieces up to 0.750" diameter and the larger for workpieces up to 2.500" diameter
- Sold Individually



Description	Code No.	Price \$
Magnetic Vee Blocks	225710	173.89

Magnetic V-Blocks



All Vee's and faces can be energized or de-energized simultaneously by turning the rotary action gun metal control knob. Gun metal construction of the knob ensures no interference with the magnetic field.



Block Length (in.)	Block Width (in.)	Block Height (in.)	Type	Model No.	Code No.	Price \$
4	3	3-3/4	Single	MVB/4S	231084	531.93
4	3	3-3/4	Pair	MVB/4P	231086	1,063.70
3-3/16	2-3/8	3-3/4	Single	MVB/5S	231088	411.11
3-3/16	2-3/8	3-3/4	Pair	MVB/5P	231090	822.18