

## Driver Studs Various Lengths — Metric



- Black oxide finish
- Medium carbon steel

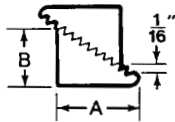


| Model No. | Thread (mm) | Overall Length (mm) | Long Thread Length (mm) | Short Thread Length (mm) | Code No. | Price \$ |
|-----------|-------------|---------------------|-------------------------|--------------------------|----------|----------|
| 60251     | M6 x 1.0    | 50                  | 20                      | 12                       | 608810   | 5.69     |
| 60252     | M6 x 1.0    | 65                  | 20                      | 12                       | 608811   | 6.11     |
| 60253     | M6 x 1.0    | 80                  | 27                      | 12                       | 608812   | 6.82     |
| 60254     | M6 x 1.0    | 95                  | 27                      | 12                       | 608813   | 7.11     |
| 60255     | M6 x 1.0    | 110                 | 31                      | 12                       | 608814   | 7.11     |
| 60351     | M8 x 1.25   | 50                  | 20                      | 12                       | 608815   | 4.55     |
| 60352     | M8 x 1.25   | 65                  | 20                      | 12                       | 608816   | 4.69     |
| 60353     | M8 x 1.25   | 80                  | 27                      | 12                       | 608817   | 4.98     |
| 60354     | M8 x 1.25   | 95                  | 31                      | 12                       | 608818   | 5.12     |
| 60355     | M8 x 1.25   | 110                 | 31                      | 12                       | 608819   | 5.26     |
| 60356     | M8 x 1.25   | 140                 | 35                      | 12                       | 608820   | 5.98     |
| 60451     | M10 x 1.5   | 50                  | 20                      | 16                       | 608821   | 4.55     |
| 60452     | M10 x 1.5   | 65                  | 20                      | 16                       | 608822   | 4.55     |
| 60453     | M10 x 1.5   | 80                  | 27                      | 16                       | 608823   | 4.55     |
| 60454     | M10 x 1.5   | 95                  | 31                      | 16                       | 608824   | 4.69     |
| 60455     | M10 x 1.5   | 110                 | 35                      | 16                       | 608825   | 4.69     |
| 60456     | M10 x 1.5   | 140                 | 35                      | 16                       | 608826   | 5.26     |
| 60551     | M12 x 1.75  | 50                  | 20                      | 16                       | 608827   | 5.40     |
| 60552     | M12 x 1.75  | 65                  | 20                      | 16                       | 608828   | 5.55     |
| 60553     | M12 x 1.75  | 80                  | 27                      | 16                       | 608829   | 5.82     |
| 60554     | M12 x 1.75  | 95                  | 31                      | 16                       | 608830   | 6.11     |
| 60555     | M12 x 1.75  | 110                 | 39                      | 16                       | 608831   | 6.40     |
| 60556     | M12 x 1.75  | 140                 | 39                      | 16                       | 608832   | 6.68     |
| 60557     | M12 x 1.75  | 175                 | 39                      | 16                       | 608833   | 7.96     |
| 60558     | M12 x 1.75  | 200                 | 39                      | 16                       | 608834   | 8.39     |
| 60651     | M16 x 2.0   | 80                  | 21                      | 18                       | 608835   | 6.82     |
| 60652     | M16 x 2.0   | 110                 | 47                      | 18                       | 608836   | 7.53     |
| 60653     | M16 x 2.0   | 150                 | 47                      | 18                       | 608837   | 8.82     |
| 60654     | M16 x 2.0   | 175                 | 47                      | 18                       | 608838   | 8.96     |
| 60655     | M16 x 2.0   | 200                 | 47                      | 18                       | 608839   | 9.66     |
| 60656     | M16 x 2.0   | 250                 | 47                      | 18                       | 608840   | 13.51    |
| 60751     | M20 x 2.5   | 80                  | 27                      | 20                       | 608841   | 8.53     |
| 60752     | M20 x 2.5   | 110                 | 47                      | 20                       | 608842   | 10.24    |
| 60753     | M20 x 2.5   | 150                 | 55                      | 20                       | 608843   | 12.50    |
| 60754     | M20 x 2.5   | 175                 | 55                      | 20                       | 608844   | 13.22    |
| 60755     | M20 x 2.5   | 200                 | 55                      | 20                       | 608845   | 14.21    |
| 60851     | M24 x 3.0   | 160                 | 35                      | 100                      | 608846   | 18.22    |
| 60852     | M24 x 3.0   | 300                 | 35                      | 100                      | 608847   | 29.26    |

## Steel Step Blocks



- Case hardened
- Black oxide finish
- Teeth match all serrated end clamps



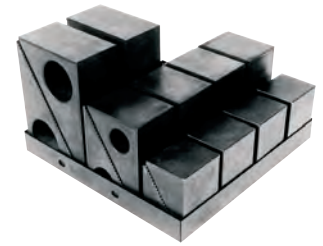
**NOTE:**  
2 pieces = 1 block

| Width (in.) | A (in.) | B (in.) | Height Adj. Range (in.) | Te-Co Code No. | Price \$ | STM Code No. | Price \$ |
|-------------|---------|---------|-------------------------|----------------|----------|--------------|----------|
| 1           | 1-1/16  | 11/16   | 3/4-1-5/8               | 608005         | 11.39    | 333875       | 11.81    |
| 1           | 1-39/64 | 1-1/16  | 1-1/8-2-1/2             | 608010         | 16.22    | 333876       | 16.01    |
| 1           | 3-3/4   | 2-15/32 | 2-1/2-6                 | 608015         | 39.19    | 333877       | 46.05    |
| 1-1/2       | 2-17/32 | 1-43/64 | 1-3/4-4                 | 608020         | 28.08    | 333878       | 20.48    |
| 1-1/2       | 3-3/4   | 2-15/32 | 2-1/2-6                 | 608025         | 55.55    | 333879       | 40.58    |
| 1-1/2       | 5-21/64 | 3-7/16  | 3-1/2-9                 | 608030         | 100.05   | 333880       | 73.12    |
| 2           | 2-17/32 | 1-43/64 | 1-3/4-4                 | 608035         | 46.58    | -            | -        |
| 2           | 3-3/4   | 2-15/32 | 2-1/2-6                 | 608040         | 70.73    | -            | -        |
| 2           | 5-21/64 | 3-7/16  | 3-1/2-9                 | 608045         | 129.79   | -            | -        |
| 2           | 7-3/8   | 4-3/4   | 4-7/8-10-1/2            | 608050         | 393.30   | -            | -        |

## Te-Co Steel Step Block Clamp Kits



- Kit contains 10 blocks and one holder
- Versatility is expanded when a T-Nut and Stud Kit is used
- Two halves = one block
- Aluminum step blocks also available

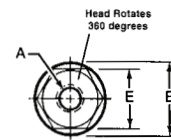


| Model No. | Contains 4 ea. | Contains 4 ea. | Contains 2 ea. | Kit Code No. | Price \$ |
|-----------|----------------|----------------|----------------|--------------|----------|
| 20801     | 608005         | 608010         | 608015         | 607898       | 194.03   |
| 20805     | 608020         | 608025         | 608030         | 607900       | 582.15   |
| 20807     | 608035         | 608040         | 608045         | 607902       | 747.96   |

## Swivel Flange Nuts



- Black oxide finish
- Case hardened
- 12L14 material

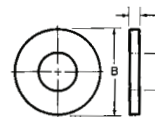


| Thread A | B     | Overall Height | Flange Height | E      | Weight (lb/100) | Model No. | Code No. | Price \$ |
|----------|-------|----------------|---------------|--------|-----------------|-----------|----------|----------|
| 1/4-20   | 5/8   | 3/8            | 1/8           | 1/2    | 2               | 42001     | 608290   | 8.35     |
| 5/16-18  | 3/4   | 7/16           | 9/64          | 9/16   | 3               | 42002     | 608291   | 8.80     |
| 3/8-16   | 7/8   | 17/32          | 5/32          | 11/16  | 4               | 42003     | 608292   | 9.72     |
| 1/2-13   | 1-1/8 | 23/32          | 7/32          | 7/8    | 11              | 42004     | 608293   | 11.08    |
| 5/8-11   | 1-3/8 | 29/32          | 1/4           | 1-1/16 | 18              | 42005     | 608294   | 14.15    |
| 3/4-10   | 1-5/8 | 1-1/64         | 9/32          | 1-1/4  | 28              | 42006     | 608295   | 17.46    |
| 7/8-9    | 1-3/4 | 1-1/8          | 7/16          | 1-7/16 | 41              | 42007     | 608296   | 26.15    |
| 1-8      | 2     | 1-16/64        | 15/32         | 1-5/8  | 57              | 42008     | 608297   | 34.36    |

## Flat Washers



- Black oxide finish
- Case hardened
- C1010 material



| Stud Size | A      | B     | C    | Code No. | Price \$ |
|-----------|--------|-------|------|----------|----------|
| 3/16      | 13/64  | 1/2   | 3/32 | 608100   | 0.81     |
| 1/4       | 9/32   | 5/8   | 1/8  | 608105   | 0.87     |
| 5/16      | 11/32  | 3/4   | 1/8  | 608110   | 0.92     |
| 3/8       | 13/32  | 7/8   | 1/8  | 608115   | 0.95     |
| 7/16      | 15/32  | 1     | 1/8  | 608120   | 1.16     |
| 1/2       | 17/32  | 1-1/8 | 1/8  | 608125   | 1.16     |
| 5/8       | 21/32  | 1-3/8 | 1/8  | 608130   | 1.42     |
| 3/4       | 25/32  | 1-5/8 | 5/32 | 608135   | 2.00     |
| 7/8       | 29/32  | 1-3/4 | 5/32 | 608140   | 2.77     |
| 1         | 1-1/32 | 2     | 3/16 | 608145   | 3.71     |
| 1-1/8     | 1-5/32 | 2-1/4 | 7/32 | 608150   | 7.89     |
| 1-1/4     | 1-9/32 | 2-1/2 | 9/32 | 608155   | 7.89     |