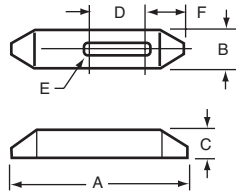


Plain Clamps

- Case hardened
- Black oxide finish

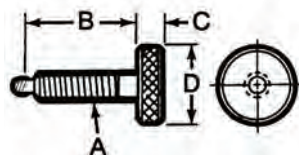


BLACK OXIDE

Model No.	A	B	C	D	Stud Size E	F	Weight (lb/100)	Te-Co Code No.	Price \$	STM Code No.	Price \$
Inch											
P-3825	2-1/2	1	1/2	13/16	5/16 and 3/8	27/32	24	607948	19.60	-	-
P-384	4	1	5/8	1-7/16	5/16 and 3/8	1-1/32	48	607950	26.15	-	-
P-386	6	1-1/8	3/4	2-3/16	5/16 and 3/8	1-5/32	105	607952	33.95	-	-
P-1225	2-1/2	1-1/8	1/2	11/16	1/2	29/32	24	607954	22.77	333862	17.61
P-124	4	1-1/4	3/4	1-5/16	1/2	1-5/32	67	607956	30.57	333864	36.84
P-126	6	1-1/4	7/8	2-1/16	1/2	1-9/32	37	607958	37.67	333866	47.33
P-5825	2-1/2	1-1/4	5/8	9/16	5/8	31/32	31	607960	26.57	333868	20.11
P-584	4	1-1/2	3/4	1-3/16	5/8	1-9/32	83	607962	33.40	333870	37.77
P-586	6	1-1/2	7/8	1-15/16	5/8	1-13/32	150	607964	42.92	333872	46.05
P-344	4	1-1/2	3/4	1-1/16	3/4	1-11/32	75	607966	35.67	-	-
P-346	6	1-1/2	1	1-15/16	3/4	1-15/32	164	607968	53.75	-	-
P-348	8	1-3/4	1-1/8	2-3/16	3/4	1-29/32	321	607970	72.04	-	-
P-16	6	2	1-1/4	1-11/16	7/8 and 1	1-27/32	274	607972	87.01	-	-
P-18	8	2	1-3/8	1-15/16	7/8 and 1	2-1/32	425	607974	111.85	-	-
P-110	10	2	1-1/2	2-15/16	7/8 and 1	2-1/32	618	607976	141.17	-	-
Metric											
30401M	64	25	13	21	M6-M8-M10	21	24	608780	19.60	-	-
30402M	102	25	16	37	M6-M8-M10	26	48	608781	26.29	-	-
30403M	152	29	19	56	M6-M8-M10	29	105	608782	33.95	-	-
30404M	64	29	13	18	M12	23	24	608783	22.77	-	-
30405M	102	32	16	33	M12	29	67	608784	30.57	-	-
30406M	152	32	19	52	M12	29	37	608785	37.67	-	-
30407M	64	32	16	14	M16	25	31	608786	26.57	-	-
30408M	102	38	19	30	M16	31	83	608787	33.40	-	-
30409M	152	38	22	49	M16	34	150	608788	42.92	-	-
30410M	102	38	19	27	M20	33	75	608789	35.67	-	-
30411M	152	38	25	49	M20	37	164	608790	53.75	-	-
30412M	203	45	29	56	M20	48	321	608791	72.04	-	-
30413M	152	51	32	43	M24	44	274	608792	87.01	-	-
30414M	203	51	35	49	M24	52	425	608793	111.85	-	-
30415M	254	51	38	75	M24	52	618	608794	141.17	-	-

Knurled Head Swivel Screw Clamps

- 12L14 steel
- Black oxide finish
- Use when finger tightening provides adequate pressure



BLACK OXIDE

* see page H145 for pads

Thread A	B	C	D	Use w/ Small Pad	Use w/ Large Pad	Use w/ Ball Pad	Use w/ "V" Pad	Weight (lb/100)	Model No.	Code No.	Price \$
1/4-20	1-15/32	5/16	1	31501	31601	31701	31801	8	31321	608250	10.34
1/4-20	1-31/32	5/16	1	31501	31601	31701	31801	12	31322	608251	10.63
5/16-18	1-5/16	3/8	1-1/8	31502	31602	31702	31802	9	31331	608252	10.63
5/16-18	1-31/32	3/8	1-1/8	31502	31602	31702	31802	13	31332	608253	11.19
5/16-18	2-15/32	3/8	1-1/8	31502	31602	30102	31802	14	31333	608254	11.77
3/8-16	1-7/16	7/16	1-1/4	31503	31603	31703	31803	18	31341	608255	11.77
3/8-16	1-15/16	7/16	1-1/4	31503	31603	31703	31803	19	31342	608256	11.91
3/8-16	2-7/16	7/16	1-1/4	31503	31603	31703	31803	20	31343	608257	12.34
3/8-16	2-15/16	7/16	1-1/4	34503	31603	31703	31803	21	31344	608258	12.63
1/2-13	2-15/16	7/16	1-1/4	31504	31604	31704	31804	26	31354	608259	13.63