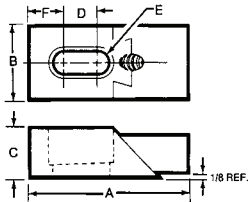
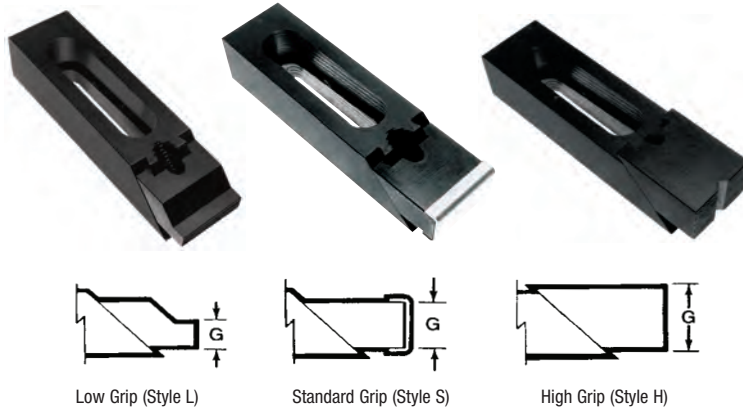


## Nuzzler® Edge Clamps



- Black oxide finish
- Noses have serrations for better gripping of non-finished or semi-finished workpieces
- Edge clamps feature a double action, adjustable nose which exerts clamping pressures both downward and inward through a 45° angle



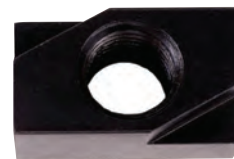
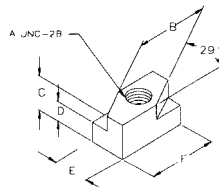
BLACK OXIDE

A	B	C	D	E	F	Nose Style	G	Wrench Size	Weight (lb/100)	Model No.	Code No.	Price \$
1-7/8	1	5/8	1/4	5/16	13/32	L	1/8	5/32	25	33817	608200	102.53
2-3/8	1	5/8	3/4	5/16	5/16	L	1/8	5/32	29	33819	608201	106.26
2-7/8	1	5/8	1-1/4	5/16	5/16	L	1/8	5/32	35	33821	608202	112.95
2-5/16	1-1/4	5/8	3/8	3/8	7/16	L	1/8	5/32	38	33801	608203	104.95
2-3/4	1-1/4	5/8	13/16	3/8	1/2	L	1/4	3/16	44	33890	608204	112.95
4-1/8	1-1/4	5/8	2	3/8	11/16	L	1/4	3/16	63	33803	608205	116.40
4-11/16	1-1/4	5/8	2-3/16	3/8	15/16	L	1/4	3/16	73	33892	608206	119.65
3-5/16	1-1/2	3/4	3/4	1/2	11/16	L	3/8	1/4	81	33805	608207	119.23
5-3/16	1-1/2	3/4	2-1/2	1/2	5/8	L	3/8	1/4	117	33807	608208	125.51
3-7/8	1-1/2	7/8	1-1/4	1/2	1/2	L	1/4	1/4	100	33823	608209	112.95
5-5/16	1-1/2	7/8	2	1/2	7/8	L	1/4	1/4	141	33825	608210	122.20
7-1/4	1-1/2	7/8	3	1/2	1-3/8	L	1/4	1/4	189	33827	608211	131.93
5-13/16	1-1/2	1-1/4	2-1/4	1/2	1-1/16	L	3/8	1/4	207	33809	608212	196.44
7-1/8	1-1/2	1-1/4	3-5/16	1/2	1-3/16	L	3/8	1/4	252	33812	608213	202.38
5-1/4	2	1-1/4	1-3/8	3/4	27/32	L	3/8	5/16	235	33829	608214	315.95
1-7/8	1	5/8	1/4	5/16	13/32	S	5/8	5/32	30	33818	608215	106.26
2-3/8	1	5/8	3/4	5/16	5/16	S	5/8	5/32	35	33820	608216	116.40
2-7/8	1	5/8	1-1/4	5/16	5/16	S	5/8	5/32	40	33822	608217	119.65
2-5/16	1-1/4	5/8	3/8	3/8	7/16	S	5/8	3/16	43	33802	608218	112.95
2-3/4	1-1/4	5/8	13/16	3/8	1/2	S	5/8	3/16	49	33891	608219	119.65
4-1/8	1-1/4	5/8	2	3/8	11/16	S	5/8	3/16	73	33804	608220	123.37
4-11/16	1-1/4	5/8	2-3/16	3/8	15/16	S	5/8	3/16	76	33893	608221	126.27
3-5/16	1-1/2	3/4	3/4	1/2	11/16	S	3/4	1/4	88	33806	608222	128.00
5-3/16	1-1/2	3/4	2-1/2	1/2	5/8	S	3/4	1/4	123	33808	608223	131.93
3-7/8	1-1/2	7/8	1-1/4	1/2	1/2	S	7/8	1/4	112	33824	608224	122.20
5-5/16	1-1/2	7/8	2	1/2	7/8	S	7/8	1/4	155	33826	608225	128.75
7-1/4	1-1/2	7/8	3	1/2	1-3/8	S	7/8	1/4	205	33828	608226	140.55
5-13/16	1-1/2	1-1/4	2-1/4	1/2	1-1/16	S	3/4	1/4	216	33810	608227	212.24
7-1/8	1-1/2	1-1/4	3-5/16	1/2	1-3/16	S	3/4	1/4	255	33813	608228	218.04
6-1/8	1-1/2	1-1/4	2-1/4	1/2	1-1/16	H	1	1/4	240	33811	608229	227.91
7-3/8	1-1/2	1-1/4	3-5/16	1/2	1-3/16	H	1	1/4	286	33814	608230	235.15
5-1/4	2	1-1/4	1-3/8	3/4	27/32	H	1-1/4	5/16	296	33815	608231	304.22
6-7/16	2-1/2	1-1/2	2	7/8	15/16	H	1-1/2	1/2	541	33816	608232	465.34

## Quarter Turn T-Slot Nuts



- Black oxide finish
- The last thread is incomplete to prevent the stud from turning through the bottom of the nut



BLACK OXIDE

Thread A	Table Slot B (in.)	Table Slot (mm)	C	D	E	F	Model No.	Code No.	Price \$
3/8-16	7/16	12	1/2	0.208	0.438	0.75	41450	608275	6.46
3/8-16	1/2	12	1/2	0.271	0.5	1	41451	608276	6.46
1/2-13	9/16	15	5/8	0.333	0.563	0.94	41452	608277	7.31
1/2-13	5/8	16	5/8	0.333	0.625	1.25	41453	608278	8.03
5/8-11	11/16	18	3/4	0.427	0.688	1.38	41454	608279	8.90
5/8-11	3/4	20	3/4	0.458	0.75	1.5	41455	608280	9.47

\* English T-Slot Nut will fit this size metric machine T-Slot