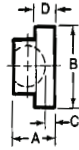


Large Pads For Swivel Screw Clamps

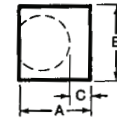
- Used to secure clamping of soft metal or angular surface without damaging workpiece
- Black oxide finish
- Left hand internal threads



Fits Body Thread	A	B	C	D	Internal Thread (L.H.)	Weight (lbs/100)	Model No.	Code No.	Price \$
1/4-20	5/16	3/8	1/8	1/8	8-36	1	31601	608285	2.61
5/16-18	23/64	1/2	5/32	5/32	12-28	1	31602	608286	2.90
3/8-16	7/16	9/16	3/16	3/16	1/4-28	1	31603	608287	3.34
1/2-13	27/64	3/4	1/8	3/16	5/16-24	2	31604	608288	3.77

Small Pads For Swivel Screw Clamps

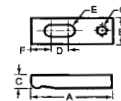
- Used to secure clamping of soft metal or angular surface without damaging workpiece
- Black oxide finish
- Left hand internal threads



Fits Body Thread	A	B	C	Internal Thread (L.H.)	Weight (lb/100)	Model No.	Code No.	Price \$
1/4-20	0.193	3/16	1/16	8-36	1	31501	608281	2.61
5/16-18	19/64	1/4	3/64	12/28	1	31502	608282	2.90
3/8-16	21/64	19/64	1/16	1/4-28	1	31503	608283	3.05
1/2-13	25/64	13/32	1/16	5/16-24	2	31504	608284	3.19

Tapped End Clamps

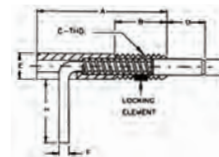
- Black oxide finish
- Case hardened



A	B	C	D	Stud Size E	F	G	Model No.	Code No.	Price \$
2	5/8	3/8	1/2	1/4	7/16	1/4-20	30902	608300	21.80
2-1/2	5/8	3/8	1/2	1/4	9/16	1/4-20	30903	608301	23.46
2-3/4	1	1/2	7/16	5/16	13/16	5/16-18	30905	608302	26.57
3-1/4	1	1/2	13/16	5/16	7/8	5/16-18	30906	608303	27.19
4	1	1/2	7/8	5/16	15/16	5/16-18	30907	608304	28.77
3	1-1/4	5/8	3/4	3/8	9/16	3/8-16	30908	608305	29.67
4	1-1/4	5/8	1	3/8	3/4	3/8-16	30909	608306	30.02
5	1-1/4	5/8	1-1/2	3/8	3/4	3/8-16	30910	608307	33.53
4	1-1/4	5/8	1	1/2	3/4	1/2-13	30912	608308	34.16
4-1/2	1-1/4	5/8	1-1/2	1/2	13/16	1/2-13	30913	608309	34.29
5	1-1/4	5/8	1-1/2	1/2	1-1/4	1/2-13	30914	608310	34.91
6	1-1/4	5/8	1-1/2	1/2	2-1/4	1/2-13	30916	608311	38.78
4-1/2	1-1/2	3/4	1	5/8	7/8	5/8-11	30917	608312	38.78
5	1-1/2	3/4	1-1/2	5/8	15/16	5/8-11	30918	608313	44.51
5-1/2	1-1/2	3/4	1-1/2	5/8	1-7/16	5/8-11	30919	608314	47.13
6	1-1/2	3/4	1-1/2	5/8	2	5/8-11	30920	608315	48.51

Hand Retractable Spring Plungers Quick Release "L" Handle

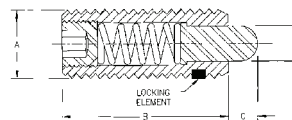
- Plunger has a slight taper for easy alignment
- Built in drive wrench for rapid installation and alignment
- Plunger can be completely withdrawn into the body and locked into a retracted position
- Nylon locking element is standard on all sizes



End Force Initial	End Force Final	A	B	Thread C	D	Hex E	Dia. F	+0.000 -0.001 G	H	Model No.	Code No.	Price \$
0.50	2.50	1.25	0.50	1/4-20	0.38	1/4	0.101	0.155	0.50	54301	608320	39.74
0.75	3.75	2.00	1.00	3/8-16	0.56	3/8	0.134	0.234	0.74	54302	608321	46.99
1.00	5.00	2.11	1.11	1/2-13	0.75	1/2	0.108	0.313	1.00	54303	608322	54.37

Standard Spring Plungers Heavy End

- Carbon and Stainless Steel Bodies
- Heavy End Forces
- Carbon and Stainless Steel Nose
- Stainless Steel Body Plungers:
 - 303 Stainless Steel Body and Nose
- Excellent Wear Resistance
- Steel Body Plungers:
 - 12L14 Steel Body
 - Black Oxide Finish
 - Case Hardened 12L14 Steel Nose, Black Oxide Finish



Thread A	B (in.)	C (in.)	Ball Dia. D (in.)	End Force Initial (lb)	End Force Final (lb)	Carbon Steel Code No.	Price \$	Stainless Steel Code No.	Price \$
6-32	17/32	0.062	0.046	1.50	4.50	609062	13.14	609075	22.84
6-32	3/8	0.062	0.046	1.00	1.60	609063	13.14	609076	22.84
8-32	5/8	0.093	0.070	2.70	7.30	609064	13.14	609077	22.43
10-32	3/4	0.125	0.093	2.90	11.10	609065	12.70	609078	22.43
1/4-20	1	0.187	0.119	3.00	13.00	609066	12.70	609079	21.39
1/4-28	1	0.187	0.119	3.00	13.00	609067	12.70	609080	21.39
1/4-20	3/4	0.125	0.119	2.00	9.00	609068	12.70	609081	20.01
5/16-18	1	0.187	0.135	3.00	15.00	609069	12.70	609082	22.43
3/8-16	1-1/8	0.187	0.186	5.50	14.50	609070	12.70	609083	24.98
1/2-13	1-1/4	0.250	0.248	6.60	17.40	609071	13.14	609084	23.60
5/8-11	1-1/2	0.312	0.310	10.50	25.50	609072	16.97	609085	43.95
3/4-10	1-3/4	0.312	0.374	6.70	37.30	609073	24.50	609086	55.96
1-8	2-13/32	0.500	0.499	16.00	68.00	609074	34.71	609087	117.92