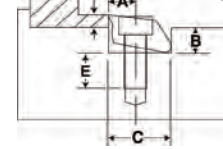
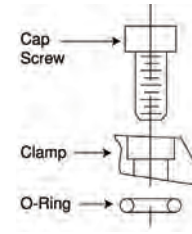




# Workholding Specialists

## Pitbull® Clamps

The Revolutionary Pitbull® Clamp remains the lowest, highest holding force clamp in the industry today. High vertical and horizontal clamping forces are generated, considering the size of the Pitbull® Clamps. It uses a standard cap screw and an oil resistant O-ring. The Pitbull® Clamp is available in 5 sizes and several styles, a tool steel knife edge for aggressive stock removal, a tool steel blunt edge for general purpose and a brass version to help prevent marring the workpiece.



Part No.	Description	A	B	Clamping Width C	D	E	Screw Size	Max Torque (ft/lbs)	Holding Force (lbs)	Total Throw	Clamps Per Pack	Code No.	Price \$ Per Pack
<b>Inch</b>													
26000	Tool Steel, Knife Edge	0.150	0.140	0.375	0.075	0.260	4-40	1.30	650	0.0075	8	604079	129.31
26010	Tool Steel, Blunt Edge	0.150	0.140	0.375	0.075	0.260	4-40	1.30	650	0.0075	8	604080	129.31
26015	Brass, Blunt Edge	0.150	0.140	0.375	0.075	0.220	4-40	0.41	200	0.0075	8	604081	129.31
26020	Tool Steel, Knife Edge	0.200	0.187	0.500	0.100	0.390	8-32	3.70	1,500	0.0160	8	604082	137.31
26030	Tool Steel, Blunt Edge	0.200	0.187	0.500	0.100	0.390	8-32	3.70	1,500	0.0160	8	604083	137.31
26040	Brass, Blunt Edge	0.200	0.187	0.500	0.100	0.340	8-32	2.00	400	0.0160	8	604084	137.31
26050	Tool Steel, Knife Edge	0.300	0.280	0.750	0.150	0.570	1/4-20	14.50	3,600	0.0240	6	604085	133.10
26060	Tool Steel, Blunt Edge	0.300	0.280	0.750	0.150	0.570	1/4-20	14.50	3,600	0.0240	6	604086	133.10
26065	Brass, Blunt Edge	0.300	0.280	0.750	0.150	0.440	1/4-20	4.10	950	0.0240	6	604087	133.10
26070	Tool Steel, Knife Edge	0.400	0.450	1.000	0.250	0.710	3/8-16	30.00	6,000	0.0500	4	604088	144.00
26075	Tool Steel, Blunt Edge	0.400	0.450	1.000	0.250	0.710	3/8-16	30.00	6,000	0.0500	4	604089	144.00
26080	Tool Steel, Knife Edge	0.600	0.640	1.500	0.375	0.770	1/2-13	108.30	12,000	0.0750	2	604090	125.93
26085	Tool Steel, Blunt Edge	0.600	0.640	1.500	0.375	0.770	1/2-13	108.30	12,000	0.0750	2	604091	125.93

Metric also available, call for more information

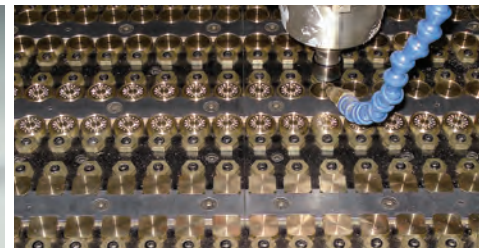
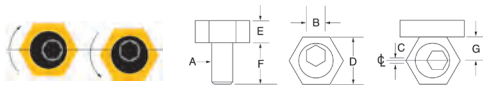
## Original Fixture Clamps

The Cam Action MITEE-BITE Fixture Clamp is made up of two simple components: a hardened steel socket cap screw with an offset head and a hexagonal washer.

- Low profile makes computer programming easier
- Cam action provides fast, strong clamping
- Small size allows more parts per load
- Simple design keeps cost low

NOTE: Clockwise rotation is recommended.

Workpiece stop should be on the right of clamp.



Part No.	A	B	C	D	E	F	*G	Torque (ft/lbs)	Holding Force	Clamps Per Pack	Code No.	Price \$ Per Pack
<b>Inch</b>												
10202	8-32	5/64	0.030	0.312	0.110	0.350	0.150	1.5	205 lbs	10	604000	87.88
10207	10-32	3/32	0.040	0.500	0.160	0.340	0.250	2.5	350 lbs	10	604001	92.50
10204	1/4-20	1/8	0.040	0.625	0.190	0.470	0.308	6.2	800 lbs	10	604002	92.50
10205	5/16-24	3/16	0.040	0.812	0.190	0.460	0.400	8.3	800 lbs	12	604003	115.86
10201	5/16-18	3/16	0.040	0.812	0.190	0.460	0.400	8.3	800 lbs	12	604004	115.86
10206	3/8-16	3/16	0.050	0.812	0.250	0.710	0.400	20.8	2,000 lbs	10	604005	106.62
10208	1/2-13	5/16	0.100	1.000	0.375	0.900	0.500	65.0	4,000 lbs	8	604006	115.86
10210	5/8-11	3/8	0.100	1.187	0.500	1.125	0.590	100.0	6,000 lbs	4	604007	87.88
<b>Metric</b>												
50204	M4	3mm	0.76mm	7.93mm	2.80mm	9.6mm	3.80mm	2.0 N.m.	910 N	10	604008	87.88
50206	M6	4mm	1.01mm	15.86mm	4.75mm	11.2mm	7.80mm	8.5 N.m.	3,558 N	10	604009	92.50
50208	M8	5mm	1.01mm	20.61mm	4.75mm	15.0mm	10.15mm	11.3 N.m.	3,558 N	12	604010	115.86
50210	M10	7mm	1.27mm	20.61mm	6.35mm	19.0mm	10.15mm	28.0 N.m.	8,895 N	10	604011	106.62
50212	M12	8mm	2.03mm	25.38mm	9.52mm	22.8mm	12.70mm	88.0 N.m.	17,790 N	8	604012	115.86
50216	M16	12mm	2.54mm	30.13mm	12.70mm	28.5mm	15.00mm	125.0 N.m.	26,680 N	4	604013	87.88
<b>Stainless Steel Washer &amp; Screw</b>												
10214	8 - 32	5/64	0.030	0.312	0.110	0.350	0.150	1.5 (ft/lbs)	205 lbs	10	604476	66.35
10203	1/4-20	1/8	0.040	0.625	0.190	0.470	0.308	6.2 (ft/lbs)	800 lbs	4	604014	99.60
10213	5/16-18	3/16	0.040	0.812	0.250	0.460	0.400	8.3 (ft/lbs)	800 lbs	4	604015	84.67
50214	M4	3mm	0.76mm	7.93mm	2.80mm	9.6mm	3.80mm	2.0(N.m.)	910N	10	604477	66.35
50205	M6	4mm	1.01mm	15.86mm	4.75mm	11.2mm	7.80mm	8.5 (N.m.)	3,558 N	4	604016	103.56
50207	M8	5mm	1.01mm	20.60mm	6.35mm	15.0mm	10.15mm	11.30 (N.m.)	3,558 N	4	604017	133.35

\*G - Location to drill and tap from edge of workpiece