

Workholding, Clamping & Fixturing

OK-VISE® Clamps



The OK-Vise Clamp

With clamping capabilities up to 33,000 lbs, the OK-Vise is one of the strongest workholding products available in the Machine Tool Industry today.

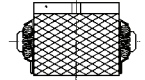
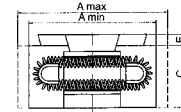
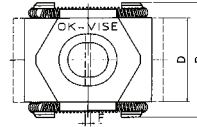
Three Dimensional Machining

Due to the low-profile design of the OK-Vise Clamps, it is possible to execute flexible three-directional machining of workpieces with one fastening. This feature creates improved accuracy. The single wedge clamp locks the workpiece to prevent any movement.



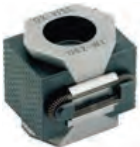
Single-Wedge OK-Vise Clamps

Strong lateral clamping with a single wedge design



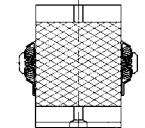
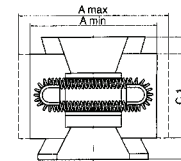
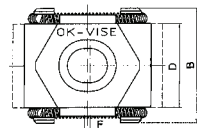
Part No.	Model	Min. (in.)	A Optimum	Max. (in.)	B	C	D	E	F	Mounting Screw (Included)	Max Torque (ft/lbs)	Pressing Force of Jaws (lbs)	Hardness of Jaws HRC	Code No.	Price \$
*47100	AK2-VT-SO	0.79	0.90	0.98	0.86	0.43	0.59	0.16	0.060	10-32 x 3/4	7	2,000	48-52	604442	97.74
*47110	BK2-VT-S	1.06	1.14	1.22	1.14	0.59	0.83	0.10	0.060	5/16-18 x 3/4	30	5,500	48-52	604068	196.85
47105	BK2-VT-O	1.06	1.14	1.22	1.14	0.59	0.83	0.10	0.060	5/16-18 x 3/4	30	5,500	48-52	604468	154.03
*47103	BK2-VT-SO	1.06	1.14	1.22	1.14	0.59	0.83	0.10	0.060	5/16-18 x 3/4	30	5,500	48-52	604469	154.03
47115	BK2-VT	1.06	1.14	1.22	1.14	0.59	0.83	0.10	0.060	5/16-18 x 3/4	30	5,500	48-52	604069	196.85
47113	BK2-VT-SS	1.06	1.14	1.22	1.14	0.59	0.83	0.10	0.060	5/16-18 x 3/4	30	5,500	48-52	604470	196.85
47130	DK2-VTI	1.65	1.77	1.93	1.61	0.87	1.18	0.16	0.080	1/2-13 x 1-1/4	110	14,500	48-52	604070	291.84
47160	FK2-VT	2.24	2.40	2.60	2.20	1.14	1.65	0.20	0.145	5/8-11 x 1-1/2	250	24,900	48-52	604071	462.11

*47100, 47110 and 47103 have smooth jaws

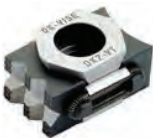


Double-Wedge OK-Vise Clamps

The double-wedge clamps generate a pull-down action pressing the workpiece down towards the fixture base

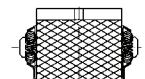
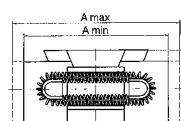
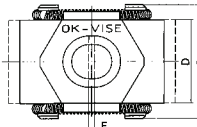


Part No.	Model	Min. (in.)	A Optimum	Max. (in.)	B	C	C1	D	E	F	Mounting Screw (Included)	Max Torque (ft/lbs)	Pressing Force of Jaws (lbs)	Hardness of Jaws HRC	Code No.	Price \$
47150	DK2-WTI	1.65	1.77	1.93	1.61	1.42	1.18	1.18	0.20	0.080	1/2-13 x 1-1/2	110	20,000	48-52	604072	412.05
47180	FK2-WT	2.24	2.40	2.65	2.20	1.97	1.65	1.65	0.20	0.145	5/8-11 x 2-1/4	250	33,000	48-52	604073	577.64



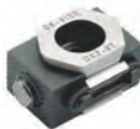
Machinable Single-Wedge OK-Vise Clamps

Additional material is added to these machinable jaws



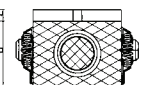
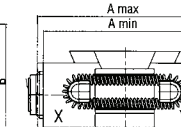
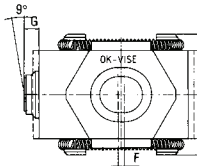
Part No.	Model	Min. (in.)	A Optimum	Max. (in.)	B	C	D	E	F	Mounting Screw (Included)	Max Torque (ft/lbs)	Pressing Force of Jaws (lbs)	Hardness of Jaws HRC	Code No.	Price \$
*47120	BK2-VT-S+3	1.30	1.38	1.46	1.14	0.59	0.83	0.10	0.060	5/16-18 x 3/4	30	5,000	30-34	604074	254.16
47140	DK2-VTI+5	2.05	2.17	2.32	1.61	0.87	1.18	0.16	0.080	1/2-13 x 1-1/4	110	12,000	30-34	604075	365.84
47170	FK2-VT+5	2.64	2.80	2.99	2.20	1.14	1.65	0.20	0.145	5/8-11 x 1-1/2	250	22,000	30-34	604076	500.62

*47120 has smooth jaw



Special Model OK-Vise Clamps

OK-Vise low-profile clamp with a self adjusting steel ball used when clamping castings and workpieces with irregular shapes



Part No.	Model	Min. (in.)	A Optimum	Max. (in.)	B	C	D	E	F	G	H	K	L	Mounting Screw (Included)	Max Torque (ft/lbs)	Pressing Force of Jaws (lbs)	Code No.	Price \$
47112	BK2-VT-T	1.18	1.26	1.34	1.14	0.59	0.83	0.10	-	0.30	0.47	0.83	M5	5/16-18 x 3/4 SHCS	30	5,000	604471	336.96
47145	DK2-VTI-T	1.81	1.93	2.09	1.61	0.87	1.18	0.16	-	0.43	0.71	1.10	M5	1/2-13 x 1-1/4 SHCS	110	12,000	604472	475.59
47175	FK2-VT-T	2.40	2.56	2.76	2.20	1.14	1.65	0.19	-	0.57	1.02	1.57	M5	5/8-11 x 1-1/2 SHCS	250	22,000	604473	612.30
47185	BK2-VT-B	1.18	1.26	1.34	1.14	0.59	.83	0.10	0.060	0.12	-	-	-	5/16-18 x 3/4	30	5,500	604077	348.42
47190	DK2-VTI-B	1.85	1.97	2.12	1.61	.87	1.18	0.16	0.080	0.20	-	-	-	1/2-13 x 1-1/4	110	12,000	604078	503.46
47187	BK2-VT-E	1.54	1.61	1.69	1.14	0.59	0.83	0.10	-	-	-	-	-	5/16-18 x 3/4 SHCS	30	5,000	604474	423.61
47186	DK2-VTI-E	2.44	2.56	2.72	1.61	0.86	1.18	0.15	-	-	-	-	-	1/2-13 x 1-1/4 SHCS	110	12,000	604475	542.98