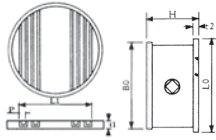


Magnetic Plate



- 7mm poles, 2mm separators
- Magnetic field intensity: > 650 gauss
- Suitable for light cutting and grinding on lathe, grinder, EDM, and rotary tables



Model	Diameter (B0)	Height (H)	Plate Diameter (L0)	L1	Code No.	Price \$
VGD-08	200mm	78mm	200mm	137mm	230626	3,030.39

Magnetic Adjustable Link



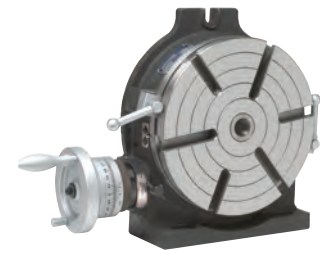
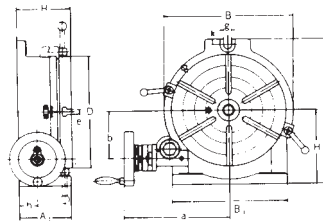
- Overall length 4-1/8"
- Overall width 2-1/8"
- For holding and welding
- Magnetic blocks can be set at any angle by adjustment and locking of the wing nut. When used in multiples, a number of sheets can be held in complicated arrangement
- Compact size for holding work in confined spaces



Model	Block Dimensions (mm)	Code No.	Price \$
VCP-5	2" x 1" x 1"	230638	117.88

Horizontal & Vertical Rotary And Dividing Tables (HV)

- This HV Type Rotary Table is so designed as to permit machining operations at a higher dimension than that of RT Type Rotary tables
- The base can be used in a vertical position to enable to carry out centre work



Model	A1	Table OD	Height H	H1	Base Dim. A	B	T-Slot Width	Bolt Slots	Centre Sleeve	Weight (kg/lb)	Worm Gear	Table Code No.	Price \$	Tailstock Code No.	Price \$	Indexing Plates Code No.	Price \$
HV-4 (mm)	70 2.76	110 4.33	80 3.15	85 3.35	145 5.71	115 4.53	11 0.43	12 0.47	MT-2	7.5 16.50	90:1	326498	1,250.00	326552	531.73	326549	409.26
HV-6 (mm)	78 3.07	150 5.91	80 3.11	100 3.94	200 7.87	160 6.30	11 0.43	15 0.59	MT-2	12 26.4	90:1	326500	1,250.00	326552	531.73	326549	409.26
HV-8 (mm)	100 3.94	200 7.87	105 4.13	135 5.31	265 10.43	220 8.66	14 0.55	17 0.67	MT-3	30.0 66.1	90:1	326505	1,934.29	326553	531.73	326550	556.38
HV-10 (mm)	110 4.33	250 9.84	115 4.53	165 6.50	325 12.80	280 11.02	14 0.55	17 0.67	MT-3	45.0 99.0	90:1	326510	2,404.28	326554	539.52	326551	558.31
HV-12 (mm)	130 5.12	300 11.81	135 5.32	195 7.68	388 15.27	330 12.99	16 0.63	18 0.71	MT-4	85 187.0	90:1	326515	2,993.59	326554	539.52	326551	558.31
HV-14 (mm)	130 5.12	350 13.78	140 5.51	230 9.06	450 17.72	380 14.95	16 0.63	18 0.71	MT-4	100 220.0	90:1	326520	3,816.33	326555	732.13	326551	558.31
HV-16 (mm)	150 5.90	406 15.98	155 6.10	255 10.03	500 19.69	430 16.93	16 0.63	18 0.71	MT-4	135 297	90:1	326525	5,652.18	326555	732.13	326551	558.31

Tailstocks for Rotary Tables

Cast iron offers good vibration, resistance, good wear resistance and machinability. It is heavier and more economical than steel.



Model No.	Adjustable		For Models	Net Weight (kg)	Code No.	Price \$
	Highest (mm)	Lowest (mm)				
TS-1	108	80	HV-4, HV-6, BS-0	3.9	326552	531.73
TS-2	145	115	HV-8, CC-6, SX-6, BS-1, BS-2	5.5	326553	531.73
TS-3	200	130	HV-10, HV-12, CC-8, SX-8, BS-2	8.1	326554	539.52
TS-4	260	190	HV-14, HV-16	11.9	326555	732.13

Universal Tilting Rotary Table



Model VU-100, VU-150, VU-300

- Tilting range 90° from horizontal to vertical position
- 1 rotation of handle equals 3 degrees, 5 minutes tilting reading
- 10 Second vernier scale
- Table Dial 1 minute graduations
- Fast degrees: Dividing notch pin and 24 holes in 15° around, insures rapid accurate spacing
- Minimum set-up time
- Rugged construction



VU-100		VU-150		VU-300	
Code No.	Price \$	Code No.	Price \$	Code No.	Price \$
326560	2,368.05	326562	2,719.85	326175	11,255.34

Specifications	4"	6"	12"
Size	100mm	150mm	300mm
Table Height	117mm	140mm	185mm
Table O/A Height (Vertical)	177mm	216mm	370mm
Centre Hole			MT 5
Centre Height (Vertical)	80mm	90mm	208mm
Direct Indexing	24-div.	24-div.	24-div.
Gear Ratio	90:1	90:1	90:1
Weight (approx)	13.5 kg	21 kg	125 kg