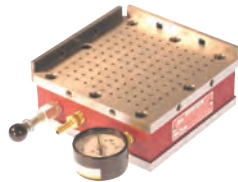


## Vacuum Chucks



- Vacuum gauge and relief valve included
- All chucks have back and end rail for positive location of workpieces
- Provide an excellent means to hold non-magnetic workpieces for machining or grinding
- Designed to be bolted directly with little or no indicating to a SineSet® sine plate or compound sine plate of the same size and series



Chuck Model No.	Size	Recommended Pump Size	Weight (lb)	Code No.	Price \$
VC-66-S1	6 x 6 x 2-1/4	1/4 HP or larger	15	251420	1,512.35
VC-612-S2	6 x 12 x 2-1/4	1/2 HP or larger	28	251422	2,067.70
VC-618-S2	6 x 18 x 2-1/4	1/2 HP or larger	41	251424	2,743.40

## Vacuum Pumps



- Oilless, motor-mount, rotary vane design for maximum performance with minimum upkeep
- Has internal mufflers and filters. The filters were specifically designed to be easily removed and replaced
- Built-in thermal overload protection
- Includes a support base, the proper fittings and six feet of reinforced hose



Pump Model No.	Description	Weight (lb)	Code No.	Price \$
VCP-14-MM*	1/4 HP, hose and fittings	31	251426	2,765.15
VCP-34-MM*	3/4 HP, hose and fittings	56	251430	3,045.00

## Electromagnetic Chucks & Controls



- Top plate has 1/8" steel poles and 1/16" Stainless Steel separators
- Chucks are completely sealed against dirt and liquids
- Can be used on EDM machines
- Longitudinal (lengthwise) or transverse (crosswise) pole models available
- 2 clamps, back rail and side rail included
- Chuck controls must be used.



Model No.	Size	Watts	Weight (lb)	Code No.	Price \$
<b>Transverse Poles</b>					
EMCB-612-T	6 x 12 x 3-3/4	72	75	251450	4,303.60
EMCB-618-T	6 x 18 x 3-3/4	130	117	251452	6,047.95
EMCB-815-T	8 x 15 x 3-3/4	125	132	251454	5,733.30
EMCB-818-T	8 x 18 x 3-3/4	150	160	251456	8,175.10
EMCB-824-T	8 x 24 x 4	220	210	251458	9,690.35
EMCB-1015-T	10 x 15 x 3-3/4	160	165	251460	8,243.25
EMCB-1024-T	10 x 24 x 3-3/4	240	255	251462	12,232.20
EMCB-1036-T	10 x 36 x 4	350	370	251464	16,482.15
EMCB-1216-T	12 x 16 x 4	200	200	251466	9,807.80
EMCB-1218-T	12 x 18 x 4	225	225	251468	10,764.80
EMCB-1224-T	12 x 24 x 4	280	310	251470	13,522.70
EMCB-1230-T	12 x 30 x 4	390	371	251472	16,367.60
EMCB-1236-T	12 x 36 x 4	430	442	251474	20,405.85
<b>Longitudinal Poles</b>					
EMCB-612-L	6 x 12 x 3-3/4	72	75	251476	2,434.55
EMCB-618-L	6 x 18 x 3-3/4	130	117	251478	3,722.15
EMCB-815-L	8 x 15 x 3-3/4	125	132	251480	4,280.40
EMCB-818-L	8 x 18 x 3-3/4	150	160	251482	4,831.40
EMCB-824-L	8 x 24 x 4	220	210	251484	6,168.30
EMCB-1015-L	10 x 15 x 3-3/4	160	165	251486	4,880.70
EMCB-1024-L	10 x 24 x 3-3/4	240	255	251488	9,506.20
EMCB-1036-L	10 x 36 x 4	350	370	251490	13,821.40
EMCB-1216-L	12 x 16 x 4	200	200	251492	7,664.70
EMCB-1218-L	12 x 18 x 4	225	225	251494	7,828.55
EMCB-1224-L	12 x 24 x 4	280	310	251496	11,215.75
EMCB-1230-L	12 x 30 x 4	390	371	251498	13,302.30
EMCB-1236-L	12 x 36 x 4	430	442	251500	15,364.20

- Specifically matched to the input requirements of Suburban's electromagnetic chucks
- 115 volts AC input
- 0-110 volts DC output
- Controls with automatic release cycle free the operator from manual demagnetizing
- Automatic release models also have touchpad controls for easy operation

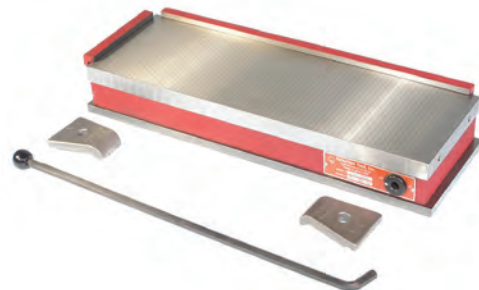


Model No.	Features	Code No.	Price \$
CC-150-MV	0-150W variable power control c/w manual release	251513	2,008.78
CC-150-AV	Same as CC-150-MV plus automatic release control	251515	4,232.91
CC-300-AV	0-300W variable power control with automatic release control	251517	5,831.93
CC-500-AV	0-500W variable power control with automatic release control	251519	6,211.20

## Magnetic Surface Grinder Chucks



For use on surface grinders, chucks have laminated one piece top plates. Two tie down clamps, two rails and removable on/off handle included. Ceramic magnet cannot lose magnetism.



Model No.	Width (in.)	Length (in.)	Code No.	Price \$
<b>Standard (1/4" Poles &amp; 1/8" Separators)</b>				
MCB-47	4	7	251022	1,406.50
MCB-510	5	10	251026	1,870.50
MCB-612	6	12	251030	2,501.25
MCB-614	6	14	251034	2,802.85
MCB-618	6	18	251038	3,320.50
MCB-812	8	12	251039	3,137.80
MCB-815	8	15	251046	3,790.30
MCB-818	8	18	251050	4,584.90
MCB-824	8	24	251054	6,121.90
MCB-1015	10	15	251055	5,940.65
MCB-1018	10	18	251057	7,128.20
MCB-1024	10	24	251059	10,019.50
MCB-1212	12	12	251061	4,819.80
MCB-1218	12	18	251063	9,106.00
MCB-1224	12	24	251065	11,270.85
<b>Fine Pole (1/8" Poles &amp; 1/8" Separators)</b>				
MC-36-FP	3	6	251020	1,365.90
MCB-47-FP	4	7	251024	1,503.65
MCB-510-FP	5	10	251028	2,159.05
MCB-612-FP	6	12	251032	2,862.30
MCB-614-FP	6	14	251036	3,158.10
MCB-618-FP	6	18	251040	3,812.05
MCB-812-FP	8	12	251041	3,584.40
MCB-815-FP	8	15	251048	4,303.60
MCB-818-FP	8	18	251052	5,092.40
MCB-824-FP	8	24	251056	6,887.50
MCB-1015-FP	10	15	251067	6,488.75
MCB-1018-FP	10	18	251069	7,635.70
MCB-1024-FP	10	24	251071	10,537.15
MCB-1212-FP	12	12	251073	5,370.80
MCB-1218-FP	12	18	251075	9,672.95
MCB-1224-FP	12	24	251077	12,475.80