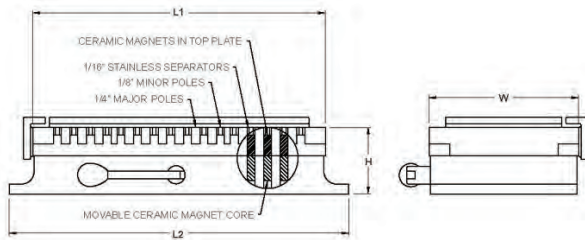
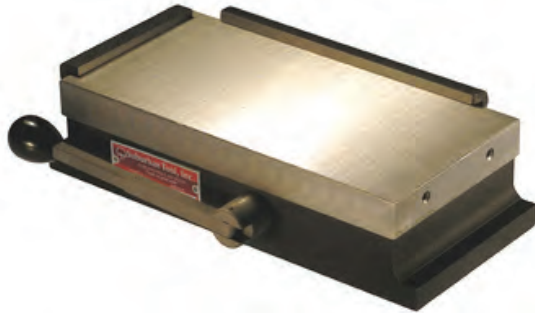


Magnum Force™ Surface Grinding Chucks



- Made with ceramic magnets for superior holding power
- Stationary magnets in the top plate and a movable magnet core provide an average holding power of 90-100 pounds per square inch. This is twice the power of a standard chuck
- Chucks are lubricated and sealed against dirt and liquids
- A rigid work surface is provided by laminated and brazed top plate
- These chucks provide maximum holding power of both small and large parts, due to combination fine / standard pole spacing
- Low height for more work clearance
- Two hold-down clamps, one side rail and one end rail are included



Model No.	L1	L2	W	H	Code No.	Price \$
DBM-44	4"	4-3/4"	4"	2-3/8"	251322	2,610.00
DBM-48	8"	9-1/8"	4"	2-3/8"	251324	2,756.45
DBM-510	10"	11-1/8"	5"	2-3/4"	251326	3,190.00
DBM-512	12"	13-1/8"	5"	2-3/4"	251328	3,671.40
DBM-66	6"	7-1/8"	6-1/2"	2-3/4"	251330	3,068.20
DBM-610	10"	11-1/8"	6"	2-3/4"	251332	3,281.35
DBM-612	12"	13-1/8"	6"	2-3/4"	251334	3,601.80
DBM-614	14"	15-1/2"	6"	2-3/4"	251336	4,238.35
DBM-618	18"	20"	6"	2-3/4"	251338	4,741.50
DBM-815	15"	15-3/4"	8"	2-3/4"	251340	5,744.90
DBM-818	18"	18-3/4"	8"	2-3/4"	251342	6,922.30
DBM-820	20"	20-3/4"	8"	2-3/4"	251344	7,859.00
DBM-824	24"	24-3/4"	8"	2-3/4"	251346	8,077.95
DBM-1015	15"	15-3/4"	10"	2-3/4"	251348	7,970.65
DBM-1018	18"	18-3/4"	10"	2-3/4"	251350	9,432.25
DBM-1020	20"	20-3/4"	10"	2-3/4"	251352	11,154.85
DBM-1218	18"	18-3/4"	12"	3-1/2"	251356	11,811.70
DBM-1224	24"	24-3/4"	12"	3-1/2"	251358	15,825.30

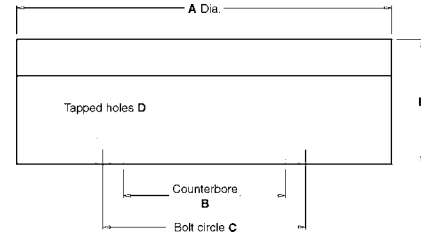
Prices in this catalogue are subject to change without notice. If there is a discrepancy between a product price listed in this catalogue and that listed on www.sowatool.com, the price on our website will take precedence.

Images are representational only and may not reflect actual product.

Round Permanent Magnetic Chucks



- Permanent ceramic magnets for superior holding power, never lose their strength
- Back surface of the aluminum chuck body has tapped holes and turned counterbore for convenient mounting on machines
- All models are watertight except 5-1/4" dia. which uses the swing-type on-off method
- Standard pole models have 1/4" poles and 1/8" separators, fine pole models have 1/8" poles and 1/8" separators

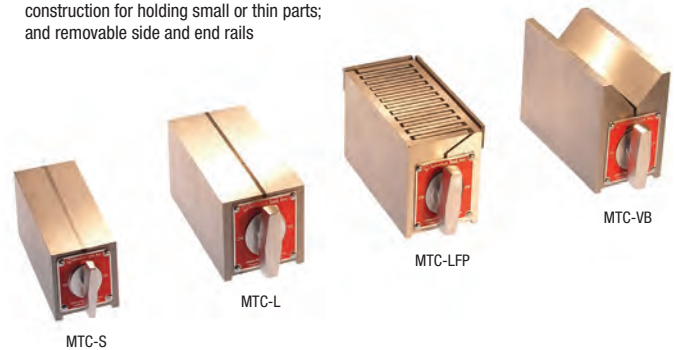


Model No.	A	B	C	D	E	Weight (lb)	Code No.	Price \$
Standard								
RMC-5	5-1/4"	3 x 1/8"	4"	(4)1/4-20	2-13/16	15	251876	1,428.25
RMC-6	6-1/4"	3 x 1/8"	4"	(4)1/4-20	2-15/16	17	251877	2,204.00
RMC-9	9-1/4"	4 x 3/16"	5"	(4)3/8-16	2-15/16	36	251878	3,890.35
RMC-12	12-1/4"	4 x 3/16"	5"	(4)3/8-16	2-15/16	60	251879	5,627.45
RMC-15	15-1/4"	6 x 1/4"	7-3/8"	(6)5/16-18	3-3/4	120	251880	10,976.50
RMC-16	16"	8 x 3/16"	9"	(6)3/8-16	2-15/16	96	251881	11,259.25
RMC-20	20"	11 x 1/4"	12-13/32"	(6)3/8-16	4-1/8	205	251882	18,435.30
Fine Pole								
RMC-6-FP	6-1/4"	3 x 1/8"	4"	(4)1/4-20x1/2	2-15/16	18	251883	2,762.25
RMC-8-FP	7-3/4"	4 x 3/16"	4"	(4)3/8-16x1/2	2-15/16	26	251884	3,584.40
RMC-10-FP	10"	4 x 3/16"	5"	(4)3/8-16x1/2	2-15/16	43	251885	4,819.80
RMC-12-FP	12-1/4"	4 x 3/16"	5"	(4)3/8-16x1/2	2-15/16	62	251886	6,746.85

Magnetic Toolmakers' Chucks



- All models precision ground flat, square and parallel to an overall accuracy of 0.0005"
- Top, bottom and end magnetize simultaneously
- Model MTC-VB has "V" capacity of 2-3/4" diameter
- Model MTC-LFP has 3/16" x 1/16" fine pole construction for holding small or thin parts; and removable side and end rails



Model No.	Length	Width	Height	Weight (lb)	Code No.	Price \$
MTC-S	5"	2"	2"	6	251868	1,036.75
MTC-L	5-1/2"	2-3/4"	2-1/2"	11	251869	1,238.30
MTC-LFP	5-1/2"	2-3/4"	3"	12	251870	1,347.05
MTC-VB	5-1/2"	2-3/4"	3-5/8"	13	251871	1,347.05
MTC-VB-M**	5-1/2"	2-3/4"	3-5/8"	26	251872	3,094.30

** Matched pair of MTC-VB