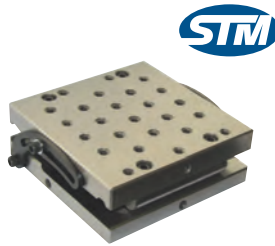


Sine Plates

YCT-66/YCT-47 Sine Plates

Precision ground, hardened to 58HRC and normalized by a sub-zero treatment. Rolls are hardened and ground to an accuracy of 0.001mm. High precision of parallelism within 0.002mm and squareness within 0.005mm. Set-up and dressing time reduced to a bare minimum due to simplicity of set up. (Angle 0°, 60°)



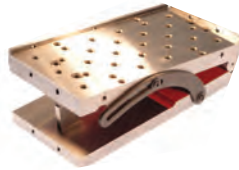
Model No.	Width x Length (in./mm)	H (in./mm)	Code No.	Price \$
YCT-47	4 x 7	2.37	230780	846.86
YCT-66	6 x 6	2.37	230785	903.08
YCT-47M Magnetic	100 x 175 mm	60 mm	230770	1,975.25
YCT-66M Magnetic	150 x 150 mm	60 mm	230775	2,172.61

Suburban SineSet® System

The complete system of bolt-together tools

Suburban Sine Plates

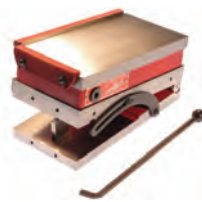
All plates are made of hardened steel. Squareness and parallelism 0.0002" and 0.0003". Locking strap always remains below top surface (pat. pending). Adjustable side rails drop below surface without unbolting. A 0.200 minute stepped gauge block roll eliminates steps in base plate. Strong, large hinge pins. Tapped holes in top plate. Side rails and locking straps included.



Model No.	Dimensions	Centre Distance of Rolls	Code No.	Price \$
SP-44-S0	4 x 4 x 2	3" ± 0.0002"	251942	1,162.90
SP-136 (not SineSet®)	6 x 3 x 2	5" ± 0.0002"	251126	1,162.90
SP-555 (not SineSet®)	6 x 5 x 2-1/4	5" ± 0.0002"	251132	1,937.20
SP-66-S1	6 x 6 x 2	5" ± 0.0002"	251136	1,703.75
SP-612-S2	6 x 12 x 2-5/8	5" ± 0.0002"	251134	3,420.55
SP-618-S2	6 x 18 x 3-3/8	5" ± 0.0002"	251944	10,181.90
SP-812-S2	8 x 12 x 2-5/8	5" ± 0.0002"	251140	4,296.35
SP-1212-S2	12 x 12 x 2-5/8	10" ± 0.0002"	251122	7,719.80
SP-126-S2	12 x 6 x 2-5/8	10" ± 0.0002"	251124	3,388.65

Suburban Magnetic Sine Plates

Ceramic permanent magnetic chucks can't lose their magnetism. Removable handle for on/off operation, end rails and side rails all included. Sine plate angles lock rigidly with locking straps. Squareness, parallelism and roll centre distances within 0.0002" and 0.0003". Unit features 0.200 minute angle steps.



Model No.	Dimensions	Centre Distance of Rolls	Code No.	Price \$
MSP-66 (not SineSet®)	6 x 6 x 4-1/4	5" ± 0.0002"	251086	3,690.25
MSP-66-S1	6 x 6 x 4-5/8	5" ± 0.0002"	251936	3,929.50
MSP-126-S2	6 x 12 x 5-1/4	10" ± 0.0002"	251066	6,034.90
MSP-612-S2	6 x 12 x 5-1/4	5" ± 0.0002"	251082	6,066.80
MSP-618-S2	6 x 18 x 6	5" ± 0.0002"	251938	13,295.05
MSP-1212-S2	12 x 12 x 5-1/4	10" ± 0.0002"	251062	12,838.30
Magnetic Fine Pole Plates				
MSP-363-FP (not SineSet®)	3 x 6 x 4-1/4	5" ± 0.0002"	251072	2,652.05
MSP-66-FP (not SineSet®)	6 x 6 x 4-1/4	5" ± 0.0002"	251088	4,006.35
MSP-126-FP-S2	6 x 12 x 5-1/4	10" ± 0.0002"	251068	6,407.55
MSP-612-FP-S2	6 x 12 x 5-1/4	5" ± 0.0002"	251084	6,439.45
MSP-1212-FP-S2	12 x 12 x 5-1/4	10" ± 0.0002"	251064	13,398.00

Sine Vises

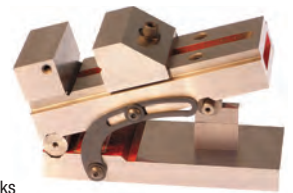
- Body is one solid piece of steel, hardened like the rest of the sine vise to 58-62 HRC
- Dual 0.200" minute steps for setting small angles with standard gauge blocks are built into the gauge block roll
- All 7" x 3-1/2" sine vises have small horizontal and vertical vees in the moveable jaw
- Provides a quick and accurate means of holding a workpiece at an angle for machining, drilling or grinding



Model No.	Size (in.)	Code No.	Price \$
YCT-SV25	3-1/2 x 2-1/2	230705	303.81
YCT-SV30	3-1/2 x 2-7/8	230710	340.14
YCT-SV200	2-3/8 x 2	230715	987.78
YCT-SV250	2-7/8 x 2-1/2	230720	931.24
YCT-SC300	3-3/8 x 3	230725	1,269.85

Suburban Sine Vises

- Solid, one piece body
- Locking strap included
- Made from steel hardened to 58-62 HRC
- Square and parallel within 0.0002" and 0.0003"
- Angled centre channel provides extra jaw capacity
- Provides a quick and accurate means of holding a workpiece at an angle for grinding or inspection
- Dual 0.200 minutes steps built into the gauge roll allow setting small angles with standard gauge blocks
- Moveable jaw pulls into base at 45° to 60° to insure maximum holding power and hold-down force, eliminating tilting and lifting



Model No.	Size (in.)	Code No.	Price \$
SV-337 (not SineSet®)	7-1/2 x 3 x 3-5/8	251160	1,925.60
SV-337-S1	7-1/2 x 3 x 3-5/8	251162	2,009.70
SV-411 (not SineSet®)	11 x 4 x 4-5/8	251166	3,142.15
SV-411-S2	11 x 4 x 4-5/8	251168	3,258.15
SV-612 (not SineSet®)	12 x 6 x 5-1/8	251170	5,385.30
SV-612-S2	12 x 6 x 5-1/8	251172	5,559.30

Suburban Compound Sine Plates

Compound sine plates include two end rails and two straps for locking angle settings. Made of hardened steel, each compound sine plate has 0.002" deep step for minute angles and tapped holes in top plate. Squareness and parallelism 0.0003".



Model No.	Dimensions	Centre Distance of Rolls	Code No.	Price \$
SPC-66-S1	6 x 6 x 3	5" within 0.0002"	251150	3,671.40
SPC-612-S2	6 x 12 x 4-1/8	5" within 0.0002"	251148	6,034.90
SPC-618-S2	6 x 18 x 5-3/8	5" within 0.0002"	251940	14,218.70
SPC-1212-S2	12 x 12 x 4-1/8	10" within 0.0002"	251144	12,503.35

Suburban Compound Magnetic Sine Plates

Ceramic permanent magnetic chuck. Removable handle for position on/off control, side rails, end rails all included. Strap locks sine plate securely. 0.200 minute angle steps with 0.0002" and 0.0003" tolerance in squareness, parallelism and roll centre distances.

- Fine Pole: (marked FP) 1/8" poles and 1/8" separators produce shallow flux lines for holding small and thin parts



Model No.	Dimensions	Centre Distance of Rolls	Code No.	Price \$
MSPC-66-S1	6 x 6 x 5-3/4	5" ± 0.0002"	251102	5,892.80
MSPC-612-S2	6 x 12 x 6-13/16	5" & 10" ± 0.0002"	251098	8,681.15
MSPC-1212-S2	12 x 12 x 6-13/16	10" ± 0.0002"	251094	21,797.65
MSPC-66-FP-S1	6 x 6 x 5-3/4	5" ± 0.0002"	251104	6,171.20
MSPC-612-FP-S2	6 x 12 x 6-13/16	5" & 10" ± 0.0002"	251100	9,052.35
MSPC-1212-FP-S2	12 x 12 x 6-13/16	10" ± 0.0002"	251096	22,490.04