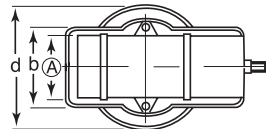
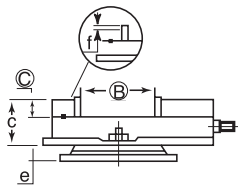


GS675 6" Precision Milling Machine Vise



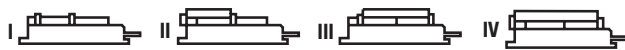
- Vises are matched (Bed Height: 2.875")
- An integral key and large fasteners reduce deflection by 50%
- 4-jaw plate positions allow extra capacity with the jaw plates in the outside position
- The swivel base is graduated 360° in one degree increments
- Chip cover protects leadscrew from damage
- The quality movable jaw does not lift off the bed, and the deflection of the stationary jaw is minimized



(Inch)

Model	Jaw Width A	Jaw Open B	C	O.A.L.	b	c	d	e	f	Plain Ship Wt	Code No.	Price \$
GS675	6	7.5	1.77	17.2	9.13	4.6	12	1.65	0.39	80lbs	327275M	833.29
Jaw Plates (2pcs)											327330	112.74
Swivel Base Only											327280	231.78
Replacement Handle											327334	66.27
Main Screw, Collar & Collar Set Screw for GS675											327284	142.90
Chip Cover											327338	17.78
Vise Nut for GS675											327288	194.93
Jaw Plate Screws (4pcs)											327286	23.35
Ball Bearing Thrust Collar											327292	26.59

Capacity

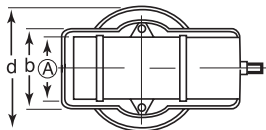
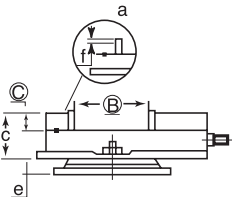


Model	I	II	III	IV
GS 675	0-7-1/2" 0-192mm	2-1/8" - 10-1/4" 54-262mm	5" - 13-1/8" 125-333mm	7" - 15-7/8" 177-403mm
GS 810	0-10.43" 0-265mm	2.36" - 3.66" 60-347mm	6.25" - 16.61" 159-422mm	8.58" - 20.79" 218-528mm

GS810 8" Precision Milling Machine Vise



- Vises are matched (Bed Height: 3.310")
- An integral key and large fasteners reduce deflection by 50%
- 4-jaw plate positions allow extra capacity with the jaw plates in the outside position
- The swivel base is graduated 360° in one degree increments
- Chip cover protects leadscrew from damage
- The other quality movable jaw does not lift off the bed, and the deflection of the stationary jaw is minimized



(Inch)

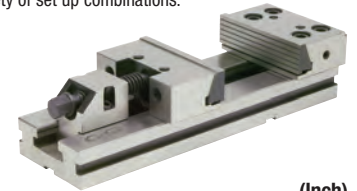
Model	Jaw Width A	Jaw Open B	C	O.A.L.	b	c	d	e	f	Plain Ship Wt	Code No.	Price \$
GS810	8	10.0	2.25	21.8	11.62	5.55	15.0	1.85	0.43	158lbs	327300	2,621.30
Swivel Base Only											327310	413.89
Jaw Plates											327311	270.85
Replacement Handle											327305	102.62

GS Plain Base Modular Vises



Manufactured under rigid quality control. As a result of the high standard construction, GS Vises can be depended upon to maintain their accuracy under the most severe operating conditions. The modular design and the concept of interchangeability makes possible a wide variety of set up combinations.

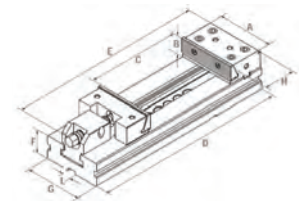
- High accuracy
- Unlimited clamping range
- High quality alloy steel
- High clamping pressure
- No jaw lift
- All vises are matched



(Inch)

Model	Jaw Width (A)	Opening (C)	Jaw Height (B)	Code No.	Price \$
1	4	4	1.2	382005	1,244.09
2	5	6	1.6	382010	1,369.50
3	6	8	1.97	382015	1,494.92
3	6	12	1.97	382017	1,739.69
4	7	8	2.4	382020	2,117.97
4	7	12	2.4	382025	2,239.34
4	7	16	2.4	382030	2,488.16
4	7	20	2.4	382032	2,983.77
5	8	8	2.6	382035	2,734.96
5	8	12	2.6	382040	3,234.61
5	8	16	2.6	382045	3,732.25
5	8	20	2.6	382050	4,478.69
5	8	24	2.6	382052	5,223.12
6	12	8	3.2	382055	4,227.85
6	12	12	3.2	382060	5,223.12
6	12	16	3.2	382065	6,220.41
6	12	20	3.2	382070	6,966.85
6	12	24	3.2	382075	7,711.28
6	12	28	3.2	382080	8,455.70
6	12	32	3.2	382085	9,202.15

Modular Vise Specs



(Inch)

Vise Size	Code No.	D	E	F	G	H	I	Kgs
4 x 4	382005	10.63	12.5	1.378	2.95	3.07	0.628	6.8
5 x 6	382010	13.583	16.4	1.575	3.8	3.04	0.64	12.9
6 x 6	382015	16.535	20.86	1.968	4.92	3.574	0.64	25.5
6 x 12	382017	20.472	20.86	1.968	4.92	3.574	0.64	29
7 x 8	382020	17.913	24.80	2.283	5.8	3.876	0.64	37
7 x 12	382025	21.85	24.80	2.283	5.8	3.876	0.64	42
7 x 16	382030	25.787	24.80	2.283	5.8	3.876	0.64	47
7 x 20	382032	29.724	24.80	2.283	5.8	3.876	0.64	52
8 x 8	382035	19.488	28.74	2.756	6.8	4.536	0.64	64
8 x 12	382040	23.425	28.74	2.756	6.8	4.536	0.64	69
8 x 16	382045	27.362	28.74	2.756	6.8	4.536	0.64	74
8 x 20	382050	31.299	28.74	2.756	6.8	4.536	0.64	79
8 x 24	382052	35.236	28.74	2.756	6.8	4.536	0.64	84
12 x 8	382055	21.063	32.67	3.07	7.67	4.74	0.64	95
12 x 12	382060	25.000	32.67	3.07	7.67	4.74	0.64	105
12 x 16	382065	28.937	32.67	3.07	7.67	4.74	0.64	115
12 x 20	382070	32.874	32.67	3.07	7.67	4.74	0.64	125
12 x 24	382075	36.811	32.67	3.07	7.67	4.74	0.64	135
12 x 28	382080	40.748	32.67	3.07	7.67	4.74	0.64	145
12 x 32	382085	44.685	32.67	3.07	7.67	4.74	0.64	155

Parts For GS 8" Precision Milling Machine Vises



Description	Code No.	Price \$
Main Screw, Collar & Collar Set Screw	327306	325.37
Ball Bearing Thrust Collar	327292	26.59
Needle Bearing Thrust Collar	327307	73.30
Chip Cover	327308	11.73
Vise Nut	327309	464.67
Jaw Plate Screws (4pcs)	327312	17.69