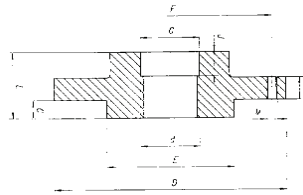


## Threaded Adapters For F/A Chucks

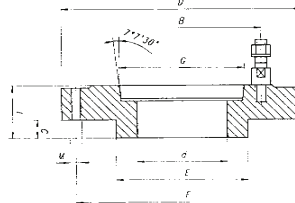
### Threaded Type 8285



Chuck Dia.	D	Thread d	G	E	F	L	C	K	M	# of Bolts	Weight lbs.	Code No.	Price \$
4"	3.94	1-10 UNS-2B	1.0150	1.771	3.268	1.54	0.47	0.51	M8 X 1.25	3	4.85	435860	271.74
		1-1/2 - 8 UN-2B	1.5150									5.29	435861
5"	4.92	1-1/2 - 8 UN-2B	1.5150	2.164	4.252	1.54	0.55	0.51	M8 X 1.25	3	6.61	435863	261.48
		2-3/16 - 10 Hardinge	2.1889			2.44						7.05	435864
6-1/4"	6.30	2-1/4 - 8 UN-2B	2.260			1.54					6.8	435865	336.25
		1-1/2 - 8 UN-2B	1.5150	3.385	5.512	1.50	0.63	0.59	M10 X 1.5	3	7.05	435866	320.66
6-1/4"	6.30	2-3/16 - 10 Hardinge	2.1889			1.61					7.50	435867	409.30
		2-1/4 - 8 UN-2B	2.2600			1.75					7.94	435868	311.31
8"	7.87	1-1/2 - 8 UN-2B	1.5150	4.330	6.929	1.50	0.67	0.59	M10 X 1.5	3	9.92	435869	483.20
		2-1/4 - 8 UN-2B	2.2600			1.75					11.46	435870	358.12
		2-3/8 - 6 UN-2B	2.3850			2.00					13.89	435871	403.44

## DIN Mount Adapters For F/A Chucks

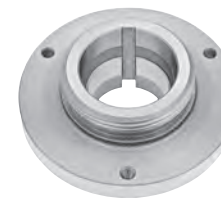
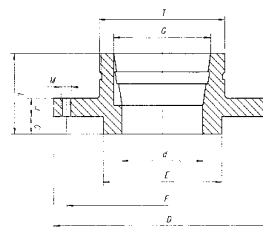
### C - Type/DIN 55027 Type 8235



Chuck Dia.	Taper Size	D	G	d	E	F	B	C	L	M	# of Studs	Weight lbs.	Code No.	Price \$
5"	C-5	4.92	3.251	1.38	2.164	4.252	4.126	0.55	1.46	M8 X 1.25	4	3.4	435874	451.58
6-1/4"	C-6	6.30	4.189	1.65	3.385	5.512	3.346	0.63	1.26	M10 X 1.5	4	6.0	435875	428.88
8"	C-6	7.87	4.188	2.17	4.330	6.929	5.252	0.67	1.57	M10 X 1.5	4	12.0	435876	1,153.40
10"	C-6	9.84	4.188	2.99	5.708	8.819	5.252	0.75	1.50	M12 X 1.75	4	28.0	435877	1,224.97
12-1/2"	C-8	12.4	5.501	4.06	7.086	11.26	6.748	0.75	1.69	M16 X 2	4	48.0	435878	1,542.45
15-3/4"	C-8	11.75	5.501	5.35	11.75	6.75	6.75	-	1.46	5/8-11	6	27	435879	1,765.10
	C-11		7.751	4.72			9.25	-				25	435880	1,765.10
20"	C-8	16.02	5.501	5.35	16.02	9.25	6.75	-	1.42	3/4-10	6	70	435881	2,361.39
	C-11		7.751	7.57			9.25	-	1.42			66	435882	3,267.19
25"	C15		11.251	7.48			13.0	-	2.05			86	435883	2,484.78
	C-8	16.02	5.501	5.35	16.02	13.0	6.75	-	1.42	3/4-10	6	70	435884	4,015.53
	C-11		7.751	7.57			9.25	-	1.42			66	435885	4,015.53
	C-15		11.251	9.92			13.0	-	2.05			75	435886	4,136.17

## L Mount Adapters For F/A Chucks

### L-Type 8255



Chuck Dia.	D	Taper Size	Thread T-UN33	G	d	E	F	M	J	C	L	Weight lbs.	Code No.	Price \$
6-1/4"	6.30	L00	3-3/4 - 6	2.750	2.20	3.385	5.51	M10 X 1.5	0.79	0.63	2.56	9.0	435887	668.46
		L0	4-1/2 - 6	3.250	2.60							9.5	435888	640.19
8"	7.87	L00	3-3/4 - 6	2.750	2.20	4.330	6.93	M10 X 1.5	0.79	0.67	2.56	15.0	435889	705.92
		L0	4-1/2 - 6	3.250	2.60							2.56	15.4	435890
10"	9.84	L1	6 - 6	4.125	3.35						2.99	16.5	435891	757.54
		L00	3-3/4 - 6	2.750	2.20	5.708	8.82	M12 X 1.75	0.91	0.75	2.76	25.0	435892	885.50
		L0	4-1/2 - 6	3.250	2.60							2.76	26.1	435893
12-1/2"	12.40	L1	6 - 6	4.125	3.35						2.99	37.0	435894	784.01
		L0	4-1/2 - 6	3.250	2.60	7.086	11.26	M16 X 2	0.91	0.75	2.76	37.0	435895	825.55
		L1	6 - 6	4.125	3.35							2.99	37.0	435896
15-3/4"	11.75	L2	7-3/4 - 5	5.250	4.29						3.50	38.8	435897	909.06
		L1	6 - 6	4.125	3.35	11.75	6.75	5/8"-11	0.87	-	2.95	34.2	435898	2,489.13
		L2	7-3/4 - 5	5.250	4.29							3.46	45.4	435899
20"	19.68	L3	10-3/8 - 4	6.500	5.43						3.94	67.2	435901	2,489.13
		L2	7-3/4 - 5	5.250	4.29	16.02	9.25	3/4"-10	1.18	-	3.66	60.2	435902	2,567.80
		L3	10-3/8 - 4	6.500	5.43							4.14	81.33	435903