

# Workholding, Clamping & Fixturing

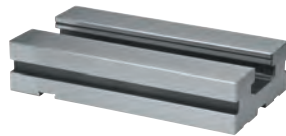
## Parts & Accessories For GS Modular Vises



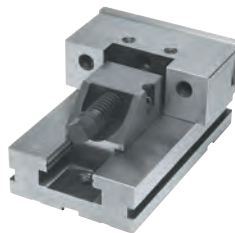
Mechanical Blocking Device



Swivel Base



Extension Base



Moveable Jaw Section and Base



Fixed Jaw Section and Base

Part Description	#1 Code No.	Price \$	#2 Code No.	Price \$	#3 Code No.	Price \$	#4 Code No.	Price \$	#5 Code No.	Price \$	#6 Code No.	Price \$
Swivel Base	382380	718.13	382385	821.29	382390	977.06	382395	1,072.14	382400	1,551.56	382405	1,933.89
Extension Base	382260	594.74	382265	668.51	382270	743.20	382275	817.89	382280	1,025.82	382285	1,438.28
Mechanical Blocking Device	382470	289.28	382475	339.85	382480	412.67	382485	465.26	382490	578.55	382495	863.78
Moveable Jaw	382412	289.28	382417	368.16	382422	438.97	382427	664.82	382432	1,004.15	382437	1,487.32
Fixed Jaw	382410	289.28	382415	368.16	382420	438.97	382425	664.82	382430	1,004.15	382435	1,487.32
Main Screw	382850	86.98	382852	119.35	382854	141.60	382856	141.60	382859	200.26	382860	200.26
T-Wrench	382820	28.33	382822	28.33	382824	30.34	382826	30.34	382828	36.41	382830	36.41
Box Wrench	382874	54.62	382876	54.62	382878	62.71	382880	62.71	382882	111.26	382884	111.26
Box Wrench (Old Version)									382883	111.26	382883	111.26
Vise Holding Jaws (Pair)	382685	104.66	382690	104.66	382695	146.61	382700	146.61	382705	157.79	382710	157.79
Positioning Keys	382655	60.69	382660	60.69	382665	60.69	382670	60.69	382675	60.69	382680	60.69
Work Stop	382770	65.00	382775	65.00	382780	65.00	382785	65.00	382790	80.92	382795	80.92
Jaw Plate for Fixed Jaw	382862	119.35	382864	129.46	382866	186.27	382868	203.32	382870	262.98	382872	351.98
Jaw Plate for Moveable Jaw	382863	119.35	382865	129.46	382867	186.27	382869	203.32	382871	262.98	382873	351.98
Machineable Smooth Soft Jaw Plate			382885	129.46	382886	186.27	382887	203.32	382888	223.96		
Lock Screw for Blocking Device	382471	16.18	382476	16.18	382481	20.23	382486	20.23	382491	22.25	382496	22.25
	M6x1 x 25mm		M12x1 x 25mm		M14x2 x 35mm		M12x1.75 x 40mm		M20x2.5 x 60mm		M20x2.5mm x 50mm	
	382472	9.40			382482	16.71						
	M8x1.25 x 25mm				M12x1.75 x 30mm							
Chrome Locking Ball for Blocking Device	382473	15.91	382477	15.50	382483	17.49	382483	17.49	382492	23.21	382492	23.21
	9/16" dia.		3/4" dia.		7/8" dia.		7/8" dia.		1-1/8" dia.		1-1/8" dia.	
<b>Pre-Assembled Groups</b>												
Overall Length	5.5"		6.30"		9"		10"		12"		13.75"	
Leadscrew Overhang	2.08"		2.3"		2.8"		2.0"		3"		2.16"	
Moveable Jaw Section and Base Assembly	382290	687.78	382295	855.68	382300	1,076.19	382305	1,260.27	382310	1,877.25	382315	3,789.38

## Prismatic Jaws

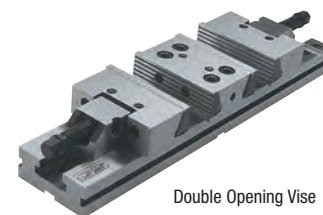


Model No.	Code No.	Price \$
#3	382890	446.75
#4	382892	594.74
#5	382894	743.20

## GS Modular Vises — Single & Double Opening



- High accuracy
- No length limitations
- Unlimited clamping range
- No jaw lift
- High quality alloy steel
- Low profile
- High clamping pressure
- All vises are matched
- Mechanical and pneumohydraulic blocking devices
- Extra long base



Double Opening Vise

## Modular Vise w/ Quick Interchangeable Pulldown Jaws



No tools needed for quick hand change of downward jaw plates



Soft Jaws



Description	Code No.	Price \$
6 x 8 Modular Vise	382896	2,093.90
Pair Soft Jaws	382897	326.30

Model	Opening	O.A.L.	Jaw Width	Weight (kg)	Code No.	Price \$
<b>Single Opening Modular Vise</b>						
1	11.4	18	4	10	382101	1,547.51
2	12.6	20.5	5	17	382102	2,083.59
3	14.7	23	6	31	382103	2,589.31
3	18.11	27	6	34	382104	2,868.47
4	16	26	7	46	382105	3,022.21
4	20	30	7	51	382106	3,321.60
5	24	36	8	92	382110	5,720.74
<b>Double Opening Modular Vise</b>						
3	2 x 4.3	23	6	38	382153	3,141.55
3	2 x 6.3	27	6	41	382154	3,428.81
4	2 x 6.7	30	7	63	382156	3,968.92
5	2 x 10	40	8	107	382172	7,148.91
6	2 x 6.3	35	12	154	382175	8,518.41
6	2 x 16	55	12	194	382180	14,072.40