

3-Jaw Steel Body Scroll Chucks With Threaded Mounting



Features:

- Special compact design
- Very small turning diameter
- Hard reversible jaws
- Maximum 4000rpm

Application:

- Especially designed for household and non-professional use
- Suitable for lathes with a threaded spindle
- Can be used with both metal and wood



Mounting 3286 Threaded		Chuck Size	2"	2.362"
		Threaded Mount	M12x1	M14x1
		Weight lbs.	1.10	1.50
		Code No.	468980	468985
		Price \$	886.30	678.13

2-Jaw Cast Iron Body Scroll Chucks — 3105

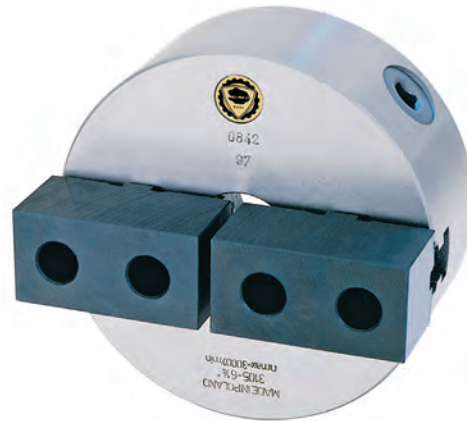


Features:

- 2-Jaw, self-centering scroll chuck with manual gripping and a high quality cast iron body
- Chucks are equipped with soft, steel top jaws, which can be individually shaped by the user and clamp irregularly-shaped workpieces
- Smart design, allowing inner parts to be replaced quickly
- Mounted on the machine-tool spindle from the back of the chuck, using the adapter plate

Application:

- This chuck is designed for all types of workshop machining operations on conventional lathes



Chuck Size	6"	8"	10"	12"	16"
Hole	1.6535	2.1654	2.9921	4.0551	5.3453
Weight lbs.	20.3	34.5	56.7	93.9	172.8
Plain Back Code No.	435500	435505	435510	435515	435520
Price \$	1,051.48	1,285.20	1,715.04	2,769.78	9,469.64

Spare Parts - See Pages: H60-61						
Standard Accessories		1 set of top jaws		1 set of hard master jaws		1 wrench
	Engineering Data See Pages: H62-66					