

3-Jaw Steel Body Large Through Hole Scroll Chucks

Features:

- Steel body extends machine life while providing higher rigidity and greater wear resistance, enabling the chuck to withstand higher machining forces
- Chucks may work individually or in pairs, mounted on opposite sides of the lathe spindle, ensuring the same vertical position of the jaws in both chucks
- Large through hole compared to the outside diameter of the chuck body
- High gripping force and high machining accuracy
- Able to machine very long workpieces
- Heavy duty components

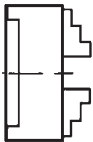
Application:




- This chuck is designed for gripping long pipes during medium duty machining for conventional and specialized machine-tools



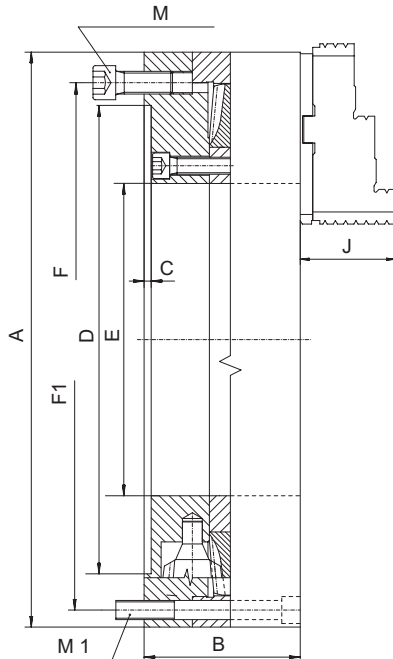
ADAPTER PLATES
Pages: H58-59

4-Jaw Independent large through hole chucks also available. See page: H68

Mounting 3597 Plain Back	Chuck Size	12"	16"	20"	26"	32"
		Hole Size	5.709	8.661	12.598	15.984
	Weight lbs.	104	161	264	506	875
	Code No.	441248	441250	441252	441253	-
	Price \$	5,007.28	9,645.59	20,103.10	28,786.52	-

Spare Parts - See Pages: H35						
Standard Accessories		1 set of hard master jaws		1 set of hard top jaws		1 wrench
Engineering Data See Pages: H62-66						

Specifications



Chuck Size	12"	16"	20"	26"	32"
A	12.4016	15.9449	20.2756	25.9843	31.4961
B	3.8189	4.3307	4.7244	5.5118	5.9055
C	0.1969	0.1969	0.1969	0.2756	0.2756
D	10.2362	12.9921	16.5354	21.4567	27.9528
E	5.7087	8.6614	12.5984	15.9843	18.1102
F	11.2598	14.2520	18.0315	23.0709	29.9213
F1	11.2598	15.0000	18.9567	24.4094	29.9213
J	2.2402	2.6378	3.1102	3.4252	-
M	3xM16x30	6xM16x40	6xM16x40	6xM16x40	6xM20x50
M1	3xM16x100	6xM12x120	6xM16x130	6xM16x150	6xM20x160
Gripping Range	1.57-5.51	2.64-5.43	10.40-20.31	13.74-24.80	10.23-18.11
Max. Speed rpm	2500	1000	800	600	700
Approx. weight	103	160	264	506	875