

3-Jaw Steel Body Heavy Duty Large Through Hole Scroll Chucks



Features:

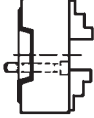
- Steel body extends machine life while providing higher rigidity and greater wear resistance, enabling the chuck to withstand higher machining forces
- Chucks may work individually or in pairs, mounted on opposite sides of the lathe spindle, ensuring the same vertical position of the jaws in both chucks
- Large through hole compared to the outside diameter of the chuck body
- High gripping force and high machining accuracy
- Able to machine very long workpieces




Application:

- This precision chuck, with increased gripping accuracy, is designed for gripping long pipes during heavy duty machining for conventional and specialized machine-tools

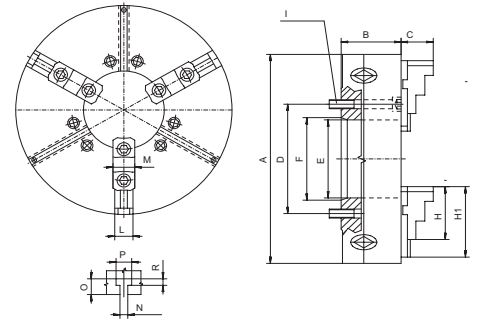
4-Jaw Independent large through hole chucks also available see page: H68



Mounting 3515 HD Short Taper		Chuck Size	15-1/4"	15-1/4"	15-3/4"	20"	25"	25"	31-1/2"	31-1/2"		
		Hole Size	4.00"	5.30"	5.00"	7.50"	10.75"	12.50"	10.75"	12.5"	12.5"	
Weight lbs.	225	217	212	344	612	552	1,104	1,076	1,076			
A2-6 Price \$	441230	14,908.08										
A2-8 Price \$			441232	14,908.08								
A2-11 Price \$					441234	19,940.29	441236					
A2-15 Price \$							441238	29,354.95		441242	43,430.33	
A2-20 Price \$									441240	33,279.45	441244	45,384.39

Spare Parts - See Pages: H35			
Standard Accessories		1 set of hard master jaws	
		1 set of hard top jaws	
		1 wrench	
Engineering Data See Pages: H62-66			

Specifications



Chuck Size	15-1/4 A6	15-1/4 A8	15-3/4 A11	20" A11	25" A15	25" A20	31-1/2 A15	31-1/2 A20
A	15.7480	15.7480	15.7480	19.6850	24.8031	24.8031	31.4961	31.4961
B	4.3701	4.3701	4.3701	4.6850	5.6693	5.6693	5.9055	5.9055
C	3.4252	3.4252	3.4252	3.4252	3.6417	3.6417	3.6417	3.6417
D	4.4646	6.7480	6.5000	9.2520	13.0000	14.5000	13.0000	18.2480
E	4.0551	5.3543	5.1181	7.5591	10.8268	12.5984	10.8268	12.5984
F	4.1880	5.5007	7.7507	7.7507	11.2510	16.2510	11.2510	16.2510
H	5.3150	5.3150	5.3150	5.3150	5.3150	5.3150	5.3150	5.3150
H1	-	-	-	6.6535	8.2677	8.2677	8.8583	8.8583
I	6x1/2"-13x4-1/2"	6x5/8"-11x4-1/2"	6x3/4"-10x4"	6x3/4"-10x5"	6x7/8"-9x6"	6x1"-8x5"	6x7/8"-9x6"	6x1"-8x5"
L	1.9685	1.9685	1.9685	1.9685	2.7559	2.7559	2.7559	2.7559
M	2.1260	2.1260	2.1260	2.1260	2.9528	2.9528	2.9528	2.9528
N	0.5512x0.3937	0.5512x0.3937	0.5512x0.3937	0.5512x0.3937	0.661x0.3937	0.661x0.3937	0.661x0.3937	0.661x0.3937
O	0.8268	0.8268	0.8268	0.8268	1.2992	1.2992	1.2992	1.2992
P	0.9055	0.9055	0.9055	0.9055	1.4567	1.4567	1.4567	1.4567
R	0.3937	0.3937	0.3937	0.3937	0.6299	0.6299	0.6299	0.6299
Gripping Range	0.9843-15.7480	0.9843-15.7480	0.9843-15.7480	1.7717-19.6850	3.1496-24.8031	6.2992-24.8031	5.1181-31.4961	7.0866-31.4961
Gripping Force daN	6200	6200	6200	7700	8200	8200	9000	9000
Max. Speed	1400	1400	1400	1000	850	850	600	600
Approx Weight lbs	225	217	211	344	611	552	1,104	1,076