

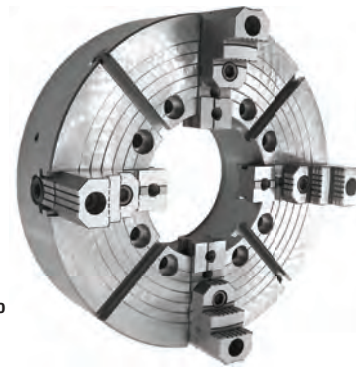
## 4-Jaw Independent Steel Body Oil Country Chucks

### Features:

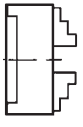
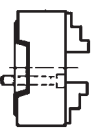
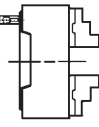
- Steel body extends machine life while providing higher rigidity and greater wear resistance, enabling the chuck to withstand higher machining forces
- Chucks may work individually or in pairs, mounted on opposite sides of the lathe spindle, ensuring the same vertical position of the jaws in both chucks
- Large through hole compared to the outside diameter of the chuck body
- High gripping force
- Able to machine very long workpieces
- High machining accuracy

### Application:

- This precision chuck, with increased gripping accuracy, is designed for gripping long pipes during heavy duty machining for conventional and specialized machine-tools



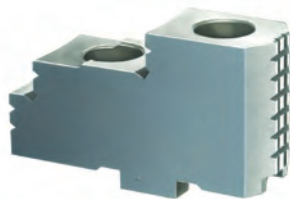
3-Jaw self-centering scroll large through hole chucks also available see page's: H55-57

Mounting	Chuck Size	16"	16"	20"	20"	25"	25"	25"	28"	28"	31-1/2"	31-1/2"	31-1/2"	40"	
		Hole	5.3"	6.5"	6.5"	8"	10.5"	10.5"	12.5"	10.5"	12.5"	10.5"	12.5"	14.5"	20.5"
		Wt. lbs.	320	302	449	414	682	649	660	913	870	1,287	1,243	1,199	1,683
<b>4307</b> Plain Back 	Code No.													450495	
	Price \$														38,170.30
<b>4317</b> Short Taper 	A2-8	450500													
	Price \$	13,035.69													
	A2-11		450505	450510											
	Price \$		13,035.69	13,686.31											
	A2-15				450515	450520			450530		450540				
	Price \$				13,686.31	16,337.08			22,233.04		29,271.40				
A2-20						450522	450525		450535		450545	450547			
Price \$						16,337.08	16,337.08		22,233.04		29,271.40	27,741.84			
A2-28													450549		
Price \$													56,417.99		
<b>4347</b> Camlock Mount 	D1-8	450550		450560 (5.3" Hole Dia.)											
	Price \$	11,269.09		17,252.50											
	D1-11		450555	450565				450570 (7.5" Hole Dia.)							
Price \$		11,269.09	13,264.53				23,640.10								

Engineering Data See Page: H64

## Hard Top Jaws For Oil Country Chucks

- Sold in sets



Chuck Size	Code No.	Price \$
15-3/4", 20"	450572	1,886.37
25", 28", 32"	450574	2,803.17

## Hard Master Jaws For Oil Country Chucks

- Sold in sets



Chuck Size	Code No.	Price \$
15-3/4"	450576	2,289.09
20"	450578	4,987.14
25", 28", 32"	450580	3,515.63