

## Operating Screws



Chuck Size	Hole Dia.	Code No.	Price \$
15-3/4"	5.3"	450594	224.04
15-3/4"	6.5"	450596	231.23
20"	5.3"	450598	270.24
20"	6.5"	450600	270.24
20"	8.0"	450602	270.24
25"	10.5"	450604	356.18
25"	12.5"	450606	356.18
28"	10.5"	450608	381.21
28"	12.5"	450610	381.21
32"	10.5"	450612	457.66
32"	12.5"	450614	457.66

## Thrust Bearings



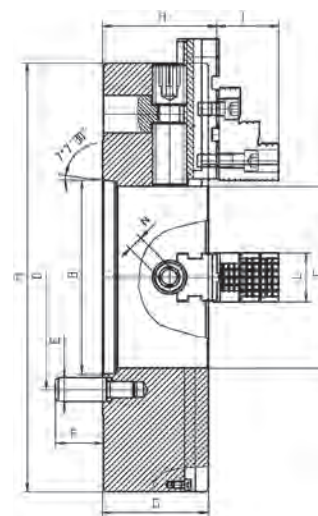
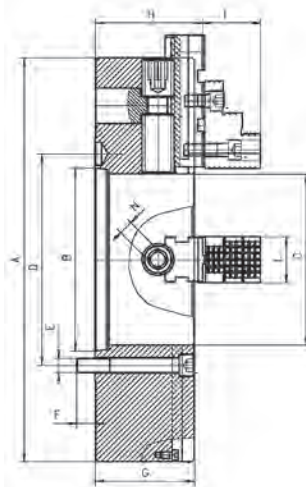
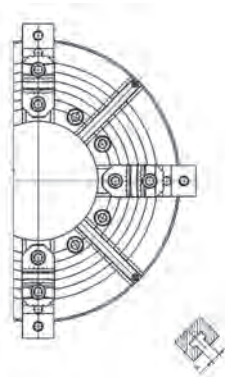
Chuck Size	Code No.	Price \$
15-3/4"	450582	226.51
20"	450584	217.11
25", 28"	450586	229.87
32"	450588	290.54

## Wrenches



Chuck Size	Code No.	Price \$
15-3/4", 20"	450590	189.13
25", 28", 32"	450592	179.87

## Specifications For Oil Country Chucks



Chuck Dia. A	Type of Mounting	Hole Dia. C (In.)	B +0.001"	D	G	H	I	K	L	N	E	F	Max. RPM	Weight lbs.
<b>Plain Back Type 4307</b>														
40"	Plain Back	22.05	28.5433	25.4961	6.89	7.366	3.571	1.10	2.953	0.866	1-1/4-7	1.53	430	1690
<b>A2 Direct Mount Type 4317</b>														
15-3/4"	A2-8	5.3	5.50075	6.750	5.71	6.067	2.981	0.709	2.362	0.748	5/8-11	0.961	1200	320
15-3/4"	A2-11	6.5	7.75075	9.250	5.71	6.067	2.981	0.709	2.362	0.748	3/4-10	1.118	1200	302
20"	A2-11	6.5	7.75075	9.250	5.71	6.067	2.981	0.866	2.362	0.748	3/4-10	1.118	1000	450
20"	A2-15	8.0	16.251	18.250	5.71	6.067	2.981	0.866	2.362	0.748	7/8-9	1.276	1000	414
25"	A2-15	10.5	11.251	13.00	6.10	6.579	3.571	0.866	2.953	0.866	7/8-9	1.343	850	684
25"	A2-20	12.55	16.251	18.252	6.10	6.579	3.571	0.866	2.953	0.866	1-8	1.50	850	662
28"	A2-15	10.5	11.251	13.00	6.10	6.579	3.571	0.866	2.953	0.866	7/8-9	1.34	750	915
28"	A2-20	12.55	16.251	18.252	6.10	6.579	3.571	0.866	2.953	0.866	1-8	1.50	750	873
32"	A2-15	10.5	11.251	13.00	6.10	6.972	3.571	0.866	2.953	0.866	7/8-9	1.34	600	1290
32"	A2-20	12.55	16.251	18.252	6.10	6.972	3.571	0.866	2.953	0.866	1-8	1.50	600	1246
<b>D1 Direct Mount Type 4347</b>														
15-3/4"	D1-8	5.3	5.50075	6.75	5.71	6.067	2.981	0.709	2.362	0.748	1	2	1200	300
15-3/4"	D1-11	6.5	7.75075	9.25	5.71	6.067	2.981	0.709	2.362	0.748	1.25	2.4	1200	282
20"	D1-8	5.3	5.50075	6.75	5.71	6.067	2.981	0.866	2.362	0.748	1	2	1000	468
20"	D1-11	6.5	7.75075	9.252	5.71	6.067	2.981	0.866	2.362	0.748	1.25	2.4	1000	452
28"	D1-11	7.5	7.75075	9.252	6.10	6.579	3.57	0.866	2.953	0.866	1.25	2.4	750	993

Workholding, Clamping & Fixturing