

Workholding, Clamping & Fixturing

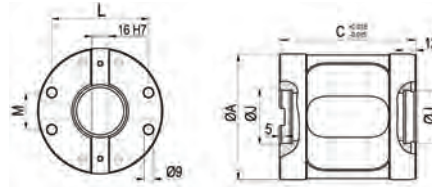
Steel Risers

Allow greater access to machine hard to reach areas of the workpiece



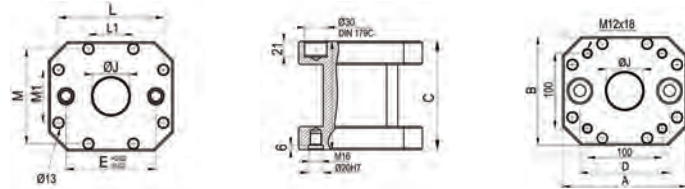
Type 1

Type 1 & 2

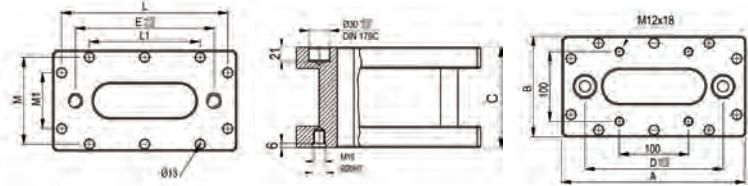


Type 3 x 166

Type 3 x 166



Type 3 x 266



Model	A	B	C	D	E	L	L1	M	M1	ØJ	kg	Code No	Price \$
Type 1	119	-	130	-	-	92	-	35	-	50 H7	6	382521	2,036.18
Type 2	158	-	130	-	-	120	-	35	-	50 H7	10	382523	5,048.57
Type 3x166	166	145	145	120	120	140	60	126	70	50 H7	14	382525	4,271.42
Type 3x266	266	125	145	200	200	240	160	125	80	-	21.5	382527	9,433.05

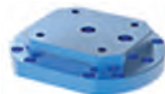
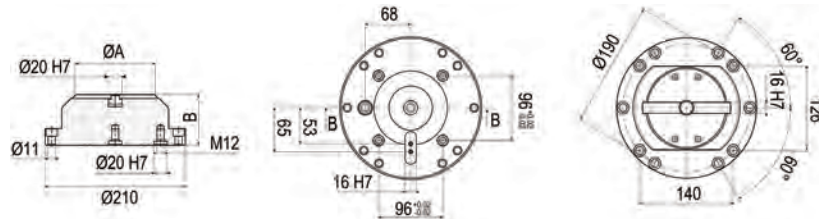
Aluminum Risers

Allow greater access to machine hard to reach areas of the workpiece



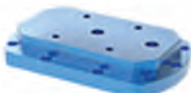
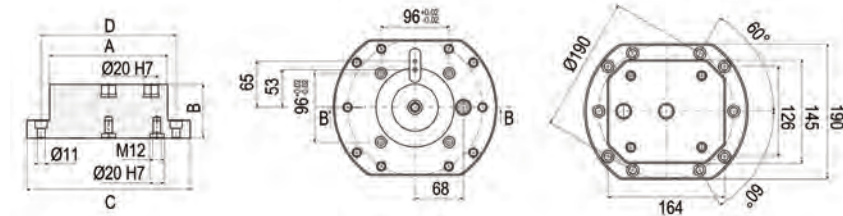
Type 1 & 2

Type 1 & 2



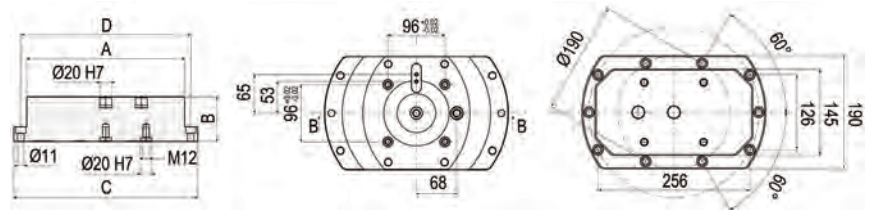
Type 3 x 166

Type 3 x 166



Type 3 x 266

Type 3 x 266



Model	A	B	C	D	kg	Code No	Price \$
Type 1	Ø120	50	-	-	3	382531	1,004.58
Type 1	Ø120	75	-	-	4.5	382532	1,059.86
Type 1	Ø120	100	-	-	5.4	382533	1,118.95
Type 2	Ø160	50	-	-	3.5	382534	1,004.58
Type 2	Ø160	75	-	-	4.9	382535	1,059.86
Type 2	Ø160	100	-	-	6.4	382536	1,118.95

Model	A	B	C	D	kg	Code No	Price \$
Type 3 x 166	166	50	230	190	3.8	382541	1,164.70
Type 3 x 166	166	75	230	190	5.3	382542	1,240.95
Type 3 x 166	166	100	230	190	6.8	382543	1,321.00
Type 3 x 266	266	50	310	286	5.8	382544	1,791.84
Type 3 x 266	266	75	310	286	8.3	382545	1,892.86
Type 3 x 266	266	100	310	286	10.7	382546	1,999.61