

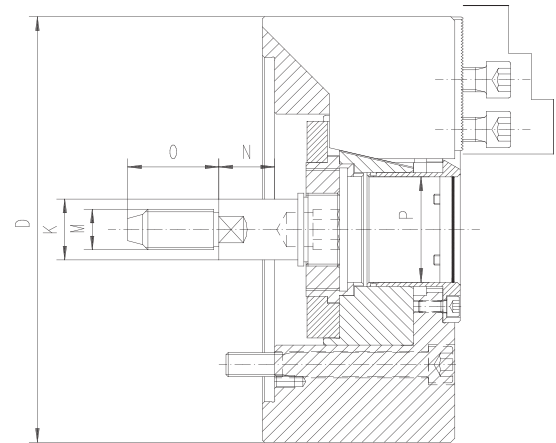
Special Insert Sets For 2405-K



Features:

- Special insert set for power chucks with through hole enable conversion to closed center option
- The set includes:
 - 1) Cover to be mounted on front surface of power chuck body instead of originally supplied hollowed cover
 - 2) Special screw for connecting threaded nut of power chuck body with the drawbar of actuating cylinder
- Sets are available in different sizes matching the chuck size

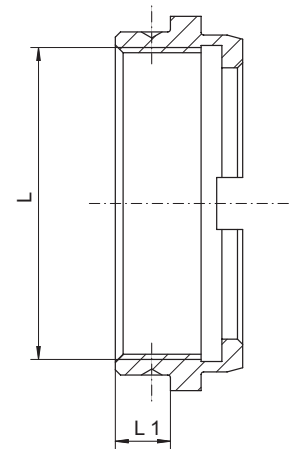
Size	160	200	250	315
Code No.	468902	468904	468906	468908
Price \$	670.57	731.79	793.03	854.27
D	169	210	254	315
P	45	52	75	91
K	24	30	36	36
M	M16	M20	M24	M24
N	25.5	27.5	33	34
O	40	45	55	55



Drawbar Nuts — Threaded



Chuck Size	L	L1	Code No.	Price \$
160	M42x1.5	8	468720	165.55
160	M55x1.5	8	468722	165.55
160	M42x2	8	468724	165.55
160	M50x1.5	8	468726	165.55
160	M55x2	8	468728	1,032.92
200	M50x1.5	11.6	468730	181.84
200	M55x1.5	11.6	468732	181.84
200	M60x1.5	11.6	468734	181.84
200	M50x2	11.6	468736	181.84
200	M55x2	11.6	468738	181.84
200	M60x2	11.6	468740	780.21
250	M60x1.5	23	468742	214.90
250	M85x1.5	23	468744	214.90
250	M60x2	23	468746	214.90
250	M80x2	23	468748	804.22
250	M85x2	23	468750	818.51
315	M100x1.5	19.5	468752	297.54
315	M100x2	19.5	468754	297.54



Drawbar Nuts — Blank



Chuck Size	J	L2	Code No.	Price \$
160	M27x2	8	468702	165.55
160	Ø20	28	468703	165.55
200	M36x2	11.6	468704	181.84
200	Ø30	31.6	468705	181.84
250	M50x2	23	468706	214.90
250	Ø45	43	468707	684.93
315	M56x2	19.5	468708	297.54
315	Ø50	39.5	468709	297.54

