



Metric Serrated Soft Top Jaws — Pointed

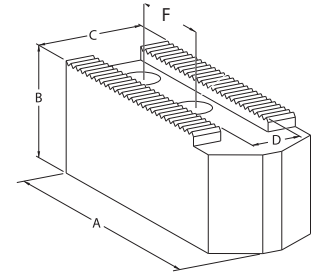
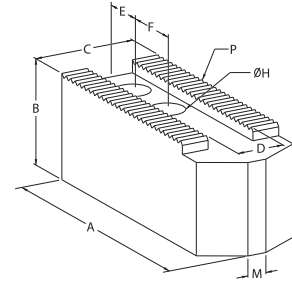
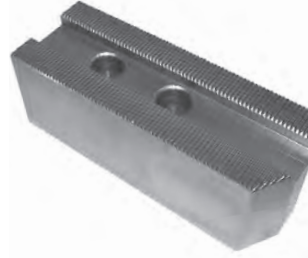
STM Jaws

- For Autoblok, Howa, Kitagawa, Matsumoto, Shunk

**QUALITY
IMPORT**

Quality Import Jaws

- For Kitagawa power chucks
Models B, BT, B200, BT200, HOH, HOB, N, NL



Chuck Dia.	Serration	A	B	C	D	E	F	H	M	Wt. (kg)	Model No.	Quality Import Code No.	Individual Price \$	STM Italy Code No.	Individual Price \$	STM Italy Code No.	Set of 3 Price \$
135	1.5x60°	55	30	25	10	10	18	9	5	0.239	HKM.13.01	-	-	491230	47.47	-	-
135	1.5x60°	55	25	25	10	14	19	9	4	0.192	HKM.13.05	-	-	491245	48.07	-	-
150(6")	1.5x60°	70	38	25	12		20	11				656010	35.62	-	-	656050**	83.29
165(6")	1.5x60°	80	30	30	12	19	20	11	7	0.40	HKM.16.05	-	-	491255	49.94	491256	156.19
165(6")	1.5x60°	75	60	30	12	19	20	11	7	0.76	HKM.16.08	-	-	491275	80.81	-	-
210(8")	1.5x60°	90	50	38	14		25	13				-	-	-	-	656055**	113.29
210(8")	1.5x60°	95	40	35	14	24	25	13	5	0.80	HKM.21.00	-	-	491290	60.79	-	-
210(8")	3x60°	95	40	40	14	24	25	13	12	0.96	HKM.21.3.01	-	-	491390	69.62	-	-
210(8")	1.5x60°	95	40	40	14	20	25	13	12	0.97	HKM.21.01	-	-	491300	60.79	491301	188.35
210(8")	1.5x60°	95	50	40	14	20	25	13	12	1.20	HKM.21.02	-	-	491320	75.27	-	-
210(8")	1.5x60°	95	60	40	14	20	25	13	12	1.44	HKM.21.03	-	-	491330	84.81	-	-
210(8")	1.5x60°	95	80	40	14	20	25	13	12	1.82	HKM.21.04	-	-	491340	122.97	-	-
210(8")	1.5x60°	95	100	40	14	20	25	13	12	2.43	HKM.21.05	-	-	491350	143.60	-	-
210-254(8")	1.5x60°	95	40	40	16	20	25	13	12	0.96	HKM.21.10	-	-	491365	62.89	-	-
254(10")	1.5x60°	110	42	40	16		30	13				656020	26.52	-	-	656060**	131.10
254-270(10")	1.5x60°	110	40	40	16	30	30	13	12	1.11	HKM.25.01	-	-	491400	63.25	491401	197.54
254-270(10")	1.5x60°	130	40	40	16	30	30	13	12	1.36	HKM.25.01 L130	-	-	491415	79.28	-	-
254-270(10")	1.5x60°	110	60	40	16	30	30	13	12	1.70	HKM.25.02	-	-	491440	88.23	-	-
254-270(10")	1.5x60°	110	80	40	16	30	30	13	12	2.28	HKM.25.03	-	-	491455	126.87	-	-
254-270(10")	1.5x60°	110	100	40	16	30	30	13	12	2.90	HKM.25.04	-	-	491475	151.97	491476	455.91
254(10")	1.5x60°	110	45	45	18	25	30	15	15	1.57	HKM.25.10	-	-	491485	71.14	-	-
304(12")	1.5x60°	120	50	38	18		30	15				656025	89.99	-	-	656065**	205.80
304-381(12")	1.5x60°	130	50	50	18	25	30	15	20	2.05	HKM.30.01	-	-	491490	95.30	491491	294.01
304-381(12")	1.5x60°	130	60	50	18	25	30	15	22	2.55	HKM.30.02	-	-	491500	104.12	-	-
304-381(12")	1.5x60°	130	80	50	18	25	30	15	22	3.44	HKM.30.03	-	-	491505	144.52	-	-
304-381(12")	1.5x60°	130	100	50	18	25	30	15	22	4.30	HKM.30.04	-	-	491520	160.79	491521	491.32
304(12")	1.5x60°	130	50	50	21	22	30	17	20	2.04	HKM.30.10	-	-	491535	95.30	491536	294.13
304(12")	1.5x60°	130	100	50	21	22	30	17	20	4.20	HKM.30.13	-	-	491555	189.18	491556	576.01
304(12")	1.5x60°	130	50	50	21	22	35	17	20	2.04	HKM.30.15	-	-	491565	95.30	-	-
381(15")	1.5x60°	165	62	62	22		43	21				-	-	-	-	656070**	535.17
381(15")	1.5x60°	155	60	60	22	37	43	21	-	3.65	HKM.38.00	-	-	491580	189.18	491581	578.23
381-454(15")	1.5x60°	165	70	70	22	37	43	21	-	5.40	HKM.38.01	-	-	491590	232.51	-	-
381(15")	1.5x60°	156	70	70	22	30	60	21	-	5.10	HKM.38.05	-	-	491620	232.51	-	-
381-454(15")	3x60°	155	60	60	22	30	50	21	-	3.65	HKM.38.3.00	-	-	491665	189.18	491666	519.10
381-454(15")	3x60°	156	70	70	22	30	50	21	-	5.10	HKM.38.3.01	-	-	491675	232.51	-	-
381(15")	1.5x60°	135	60	50	25.5	26	43	21	-	2.49	HKM.38.10	-	-	491640	131.57	491641	378.70
381-454(15")	1.5x60°	165	70	70	25.5	37	43	21	-	5.40	HKM.38.11	-	-	491655	232.51	491656	708.52
381(15")	1.5x60°	135	100	50	25.5	26	43	21	-	4.14	HKM.38.12	-	-	491672	223.33	-	-
454-610(18")	3x60°	200	70	70	25	40	60	21	-	6.60	HKM.53.3.01	-	-	491700	285.05	-	-

** Quality Import