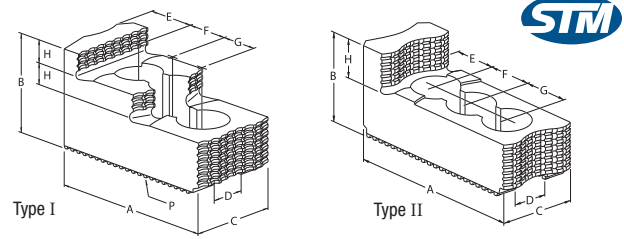


Hard Top Jaws — 90° Serrations

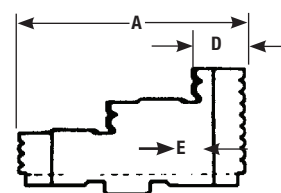
- Hard Top Jaws Serrated 90° for Autoblok, Berg, Forkardt, Gamet, M.P.T, Rohm, SMW



Model No.	Chuck Dia.	Serration	Drawing No.	A (mm)	B (mm)	C (mm)	D (mm)	E (mm)	F (mm)	G (mm)	H (mm)	Weight kg.	Set of 3 Code No.	Price \$
3101/MTR	125-160	1/16x90°	I	58	34	29	12	14	16	16	8.5	0.2	491712	2,143.01
3102/MTR	160	1/16x90°	I	65	39	34	14	18	16	16	10	0.3	491714	2,471.18
3103/MTR	200-220	1/16x90°	I	82	45	40	17	19	23	23	10.5	0.6	492000	2,799.34
3104/MTR	250-315	1/16x90°	I	105	56	45	21	28	30	30	13.5	0.98	492002	3,460.50
3105/MTR	315-350	1/16x90°	I	122	56	50	21	43	30	30	13.5	1.43	492005	5,484.18
3106/MTR	400	1/16x90°	I	120	74	55	21	31	34	34	22	1.9	492006	6,055.95
3107/MTR	400	1/16x90°	I	152	74	55	21	57	34	34	22	2.58	492007	6,577.99
3108/MTR	500	3/32x90°	II	147	73	55	28	46	38	38	32	2.23	492008	7,572.29
3109/MTR	610-800	3/32x90°	II	147	75	70	28	46	38	38	32	3.2	492009	7,965.12
3110/MTR	500-630	3/32x90°	II	147	73	55	25.5	46	38	38	32	2.25	492011	7,965.12
3111/MTR	610-800	3/32x90°	II	147	75	70	25.5	46	38	38	32	3.23	492012	8,407.67

Hard Top Jaws American Tongue And Groove

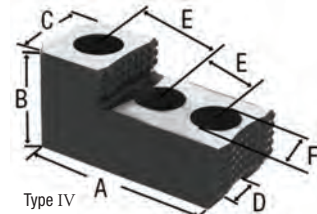
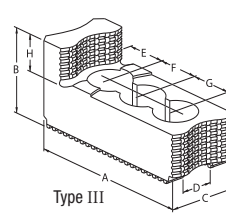
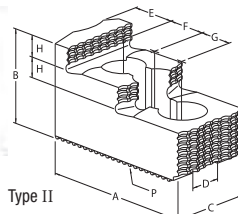
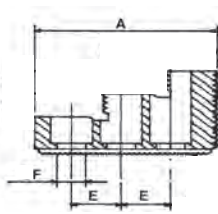
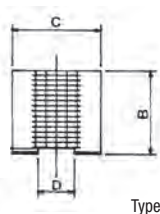
For most manual lathe chucks.



Chuck Dia.	A (mm)	B (mm)	C (mm)	D (mm)	E (mm)	STM Code No.	Price \$	Rohm Code No.	Price \$
125	56	12.68	32	13	9			399870	496.09
160	66.7	12.68	38.1	15.8	9			397020	496.09
200	79.5	12.68	44.45	19	9			397025	513.38
250	95.3	19.03	53.95	22.2	14			397030	543.97
250-315	90	20	40	-	-	492030	2,048.54		
315	109.5	19.03	63.5	25.4	14			397035	813.95

Hard Top Jaws — 60° Serrations

- Hard Top Jaws Serrated 60° for Kitagawa, Howa, Matsumoto, Suga, Nikko And Other Brands



Chuck Dia.	Drawing No.	Serration	A (mm)	B (mm)	C (mm)	D (mm)	E (mm)	F (mm)	Sold By	STM Code No.	Price \$	Rohm Code No.	Price \$
6"	IV	1.5x60°	66	36	34.7	12	20	11	Set			395505	856.52
6"	III	1.5x60°	67.5	36	31	12	14.5	20	Set	492010	2,307.09		
8"	I	1.5x60°	81	49	36	14	25	13	Set			395510	856.52
10"	I	1.5x60°	99.5	54	44.5	16	30	13	Set			395515	992.18
12"	IV	1.5x60°	97.5	50	55	18	30	15	Piece			395517	554.97
12"	III	1.5x60°	98	55	50	18	20	30	Set	492015	4,335.71		
12"	IV	1.5x60°	103	55.5	50	21	30	17	Set			395520	1,157.11
15"	IV	1.5x60°	149	62	80	22	43	21	Piece			395521	940.01
15"	IV	1.5x60°	149	62	86	25.5	43	21	Piece			395522	931.55
15"	II	1.5x60°	149	86	62	22	27	43	Set	492020	7,129.86		
15"	II	1.5x60°	149	86	62	25.5	27	43	Set	492025	7,129.86		