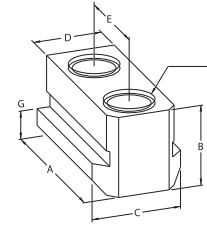


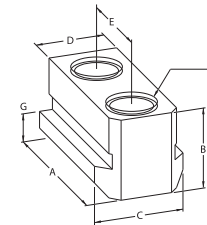


T-Nuts For Matsumoto Chucks



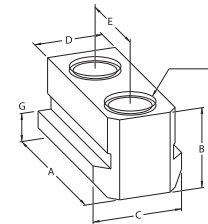
Model No.	Chuck Dia.	A (mm)	B (mm)	C (mm)	D (mm)	E (mm)	F (mm)	G (mm)	Weight kg.	Code No.	Price \$
2903/GT20	125-150	32	20	16.5	11	20	M8	7	0.04	494126	73.97
2905/GT22	150-200	45	22	20	14	25	M12	8.5	0.08	494124	84.70
2905/GT23	200-280	53	23	22	16	30	M12	8	0.12	494075	81.83
2907/GT33.5	300	55	33.5	25	18	30	M12	13.5	0.2	494110	89.34
2909/GT50	381-457	90	39.5	33	22	50	M20	19.5	0.52	494130	334.03

T-Nuts For Kitagawa Chucks



Model No.	Chuck Dia.	A (mm)	B (mm)	C (mm)	D (mm)	E (mm)	F (mm)	G (mm)	Weight kg.	Code No.	Price \$
2902/GT13.5	110	25	13.5	11.3	8	15	M6	4.5	0.015	494052	73.97
2903/GT18	100	28	18	15	10	14	M8	5.5	0.028	494053	73.97
2903/GT15-14	100-130	26	15	15	10	14	M8	5.5	0.021	494055	71.47
2903/GT18-19	125	32	18	15	10	19	M8	5.5	0.02	494056	73.97
2903/GT15.5	135	30	15	14	10	18	M8	5.2	0.025	494057	73.97
2904/GT22	160	40	22	18	12	20	M10	7	0.068	494073	73.97
2904/GT18.5	160	40	18.5	18	12	20	M10	7.5	0.071	494060	71.47
2905/GT24.5	200-210	45	24.5	20	14	25	M12	8.5	0.096	494080	81.83
2905/GT20.5	200-210	45	20	20	14	25	M12	8	0.08	494070	81.83
2906/GT24.5	250	53	24.5	22	16	30	M12	8.5	0.136	494095	81.83
2906/GT21.5	250	53	21.5	22	16	30	M12	8.5	0.124	494085	81.83
2907/GT33.5	300	55	33.5	25	18	30	M14	13.5	0.218	494110	89.34
2907/GT30	300	55	30	25	18	30	M14	9.5	0.180	494111	92.47
2909/GT28	300	58	28	30	21	30	M16	11.5	0.225	494115	107.32
2910/GT43	381-457	80	45.5	34	24	43	M20	16.5	0.511	494135	328.11
2911/GT50	457	90	45	37.5	25	50	M20	19	0.695	494140	334.49
2911/GT60	457	100	45	37.5	25	60	M20	19	0.800	494141	345.72
2912/GT	381	80	39.2	35	25.5	43	M20	19	0.548	494150	334.03
2912/GT60	457	100	54	37.5	25	60	M20	19	0.925	494145	345.31

T-Nuts For Howa Chucks



Model No.	Chuck Dia.	A (mm)	B (mm)	C (mm)	D (mm)	E (mm)	F (mm)	G (mm)	Weight kg.	Code No.	Price \$
2904/GT22	160	40	22	18	12	20	M10	7	0.068	494073	73.97
2905/GT23	200-210	45	23	20	14	25	M12	8.5	0.083	494075	81.83
2906/GT23	250	53	23	22	16	30	M12	8	0.12	494090	81.83
2906/GT26.5	250	45	26.5	22	16	25	M12	8.5	0.12	494100	81.83
2907/GT27.5	300	55	27.5	25	18	30	M14	9.5	0.161	494105	89.34
2907/GT33.5	300	55	33.5	25	18	30	M14	13.5	0.2	494110	89.34
2909/GT29	300	68	29	30	21	40	M16	10.5	0.264	494120	107.32
2909/GT29-35	300	61	29	30	21	35	M16	10.5	0.24	494125	107.32
2909/GT40	381-610	82	40	34	26	50	M20	23	0.52	494127	345.72

OTHER T-NUTS AVAILABLE ON REQUEST