

Collet Master™ Index Fixture



- 48 index positions, +/- 45 arc seconds every 7-1/2 degrees
- Uses all standard 5C collets
- Two sealed, pre-loaded ball bearings in spindle
- Hardened and Ground base held square and parallel to spindle within 0.0002"
- Maximum spindle runout is 0.0001"
- Drawbar and fitted wooden case included
- Optional faceplate and V-block available for eccentric forms



Model No.	Centre Height	Overall Length	Indexing Accuracy	Weight (lb)	Code No.	Price \$
CM-5C	3-5/8"	6-1/2"	+/-45 Sec.	9 lb	251550	2,739.05

Optional Faceplate & V-Block For Collet Master Index Fixture



- Optional faceplate and V-block available for eccentric forms



Model No.	Faceplate Diameter	V-Block Capacity	Weight	Code No.	Price \$
CM-5C-FVB	6-1/2"	1-3/8"	15 lbs	251552	1,294.85

Mini-Master™ Index Fixture



- 72 position index plate allows an index every 5 degrees +/-15 arc seconds.
- Spindle rides in sealed, preloaded ball bearings
- Light weight for easy handling
- Uses standard ER-25 spring collets
- Spindle runout 0.0002" T.I.R.
- 3" height is ideal for small machine set-ups
- Hardened steel base is ground square and parallel with spindle axis within 0.0002"
- Fitted wooden case included



Model No.	Centre Height	Collet Capacity	Through Hole	Weight (lb)	Code No.	Price \$
MM-25R	1-7/8"	All ER-25	5/8"	4 lbs	251566	2,050.30

Spin-Master™ Index Fixture



- Uses standard 5C collets
- 2-5/16" spindle travel for flute grinding
- Runout on hardened and ground spindle is 0.0005" T.I.R.
- 3-7/8" x 4-5/32" base ground parallel to spindle
- Sides of base ground parallel to spindle axis
- Index plate with 36 holes for direct indexing in 10° steps and is graduated in 5° increments. 10 vernier holes provide 1° indexing

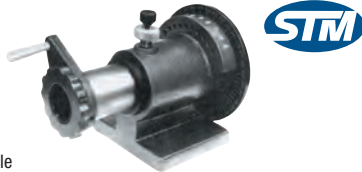


Model No.	Centre Height	Collet Capacity	Through Hole	Weight (lb)	Code No.	Price \$
SM-5C	2-3/4"	All 5C	1-1/4"	15 lbs	251564	1,840.05

5C Spin Index

Accepts 5C Collets to 1-1/8" Capacity

- A multi-purpose accessory
- Vernier setting to 1 degree
- 2-1/16" spindle travel for flute grinding
- Index plate has precise (10°) 36 hole circle



Model No.	Code No.	Price \$
C1-310	326110	160.48

Specifications	Max. Variation Inches
True running of dividing spindle flange surface	0.0004"
True running of cylindrical centre bore per 1"	0.0012"
Parallelism of spindle centre line to base	0.0008"

Horizontal/Vertical 5C Collet Index



The Spindle has a taper seat in the body frame. Rapid opening and closing of the collet on a production basis is done with the lever collet closer having a leverage ratio of 100 to 1. A ratchet device on the front of the spindle permits rapid rotation of the spindle nose. The index plate has a screw in each of the 24 index holes so that holes not required for a particular job can be masked. Threaded spindle 2-1/4" - 8TPI.

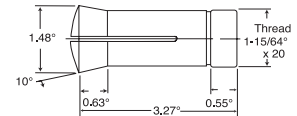


Model No.	Code No.	Price \$
C1-108	326108	899.79

Specifications	Max. Variation Inches
True running of axis for dividing spindle	0.0004"
True running of cylindrical centre bore per 1"	0.0012"
Parallelism of spindle centre line to base	0.0008"
Squareness of base angle face	0.0008"
Parallelism of centre slot to dividing spindle	0.0008"
Lateral offset of centre slot to dividing spindle	0.0008"

5C Collets

- Made of tool steel, hardened and ground to maintain original accuracy

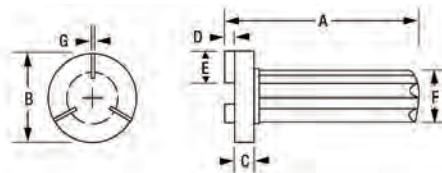


Size (in.)	GS Code No.	Price \$	STM Code No.	Price \$
1/8	325317	31.89	325315	16.64
3/16	325322	31.89	325320	16.64
1/4	325327	31.89	325325	16.64
5/16	325332	31.89	325330	16.64
3/8	325337	31.89	325335	16.64
7/16	325342	31.89	325340	16.64
1/2	325347	31.89	325345	16.64
9/16	325354	31.89	325350	16.64
5/8	325357	31.89	325355	16.64
11/16	325362	31.89	325360	16.64
3/4	325367	31.89	325365	16.64
13/16	325372	31.89	325370	16.64
7/8	325377	31.89	325375	16.64
15/16	325382	31.89	325380	16.64
1	325387	31.89	325385	16.64
5C Collet Set 1/8-1"			325310	239.70

5C Collet Wrench



- Simplifies insertion and removal of collets in the spindle nose on CNC lathes
- Steel head and fins for greater strength and durability



Model No.	A	B	C	D	E	F	G	Code No.	Price \$
1005C	4.25	1.25	0.50	0.25	0.28	1.13	0.052	604327	72.00