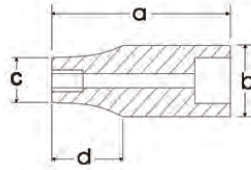


## SAE Deep Chrome Sockets

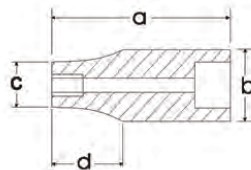
- Meets ANSI standards
- Chrome finish for maximum resistance against corrosion
- Large laser etched markings improve size identification
- Knurled ring provides superior grip for quicker and easier removal of socket from ratchets and attachments



Size	Overall Length (a)	Drive End (b)	Hex End (c)	Taper Length (d)	Dynamic EDP	6-point Code No.	Price \$	Dynamic EDP	12-point Code No.	Price \$
3/8"	3.03"	0.86"	0.52"	1.81"	D016512	866354	13.94	D015612	866782	15.32
7/16"	3.03"	0.86"	0.57"	1.81"	D016514	866355	17.08	D015614	866783	15.32
1/2"	3.03"	0.86"	0.67"	1.81"	D016516	866356	17.08	D015616	866784	15.21
9/16"	3.03"	0.86"	0.73"	1.81"	D016518	866357	17.08	D015618	866785	14.92
5/8"	3.03"	0.86"	0.81"	1.81"	D016520	866358	17.08	D015620	866786	15.21
11/16"	3.03"	0.86"	0.86"	-	D016522	866359	17.70	D015622	866787	16.24
3/4"	3.03"	0.94"	0.94"	-	D016524	866360	18.82	D015624	866788	17.59
13/16"	3.03"	1.02"	1.02"	-	D016526	866361	20.09	D015626	866789	17.59
7/8"	3.03"	1.09"	1.09"	-	D016528	866362	21.65	D015628	866790	19.25
15/16"	3.03"	1.17"	1.17"	-	D016530	866363	24.04	D015630	866791	20.39
1"	3.03"	1.25"	1.25"	-	D016532	866364	28.08	D015632	866792	24.65
1-1/16"	3.03"	1.33"	1.33"	-	D016534	866365	28.59	D015634	866793	24.74
1-1/8"	3.03"	1.41"	1.41"	-	D016536	866366	29.44	D015636	866794	29.62
1-3/16"	3.03"	1.49"	1.49"	-	D016538	866367	30.31	D015638	866795	30.45
1-1/4"	3.03"	1.65"	1.65"	-	D016540	866368	32.67	D015640	866796	31.59
1-5/16"	3.03"	1.72"	1.72"	-	D016542	866369	33.61	D015642	866797	31.88

## Metric Deep Chrome Sockets

- Meets ANSI standards
- Chrome finish for maximum resistance against corrosion
- Large laser etched markings improve size identification
- Knurled ring provides superior grip for quicker and easier removal of socket from ratchets and attachments



Size	Overall Length (a)	Drive End (b)	Hex End (c)	Taper Length (d)	Dynamic EDP	6-point Code No.	Price \$	Dynamic EDP	12-point Code No.	Price \$
10mm	3.03"	0.86"	0.59"	1.81"	D016210	866315	17.08	D015710	866798	15.32
11mm	3.03"	0.86"	0.64"	1.81"	D016211	866316	17.10	D015711	866799	15.32
12mm	3.03"	0.86"	0.69"	1.81"	D016212	866317	17.08	D015712	866800	15.21
13mm	3.03"	0.86"	0.74"	1.81"	D016213	866318	17.08	D015713	866801	15.21
14mm	3.03"	0.86"	0.80"	1.81"	D016214	866319	17.08	D015714	866802	14.92
15mm	3.03"	0.86"	0.83"	1.81"	D016215	866320	17.08	D015715	866803	15.21
16mm	3.03"	0.86"	0.86"	-	D016216	866321	17.08	D015716	866804	15.21
17mm	3.03"	0.94"	0.94"	-	D016217	866322	17.17	D015717	866805	16.24
18mm	3.03"	1.02"	1.02"	-	D016218	866323	18.21	D015718	866806	17.59
19mm	3.03"	1.02"	1.02"	-	D016219	866324	18.30	D015719	866807	17.59
20mm	3.03"	1.09"	1.09"	-	D016220	866325	19.50	D015720	866808	18.21
21mm	3.03"	1.09"	1.09"	-	D016221	866326	20.86	D015721	866809	17.59
22mm	3.03"	1.17"	1.17"	-	D016222	866327	23.10	D015722	866810	19.25
23mm	3.03"	1.25"	1.25"	-	D016223	866328	24.48	D015723	866811	20.39
24mm	3.03"	1.25"	1.25"	-	D016224	866329	24.48	D015724	866812	20.39
25mm	3.03"	1.33"	1.33"	-	D016225	866330	29.65	D015725	866813	25.67
26mm	3.03"	1.33"	1.33"	-	D016226	866331	30.12	D015726	866814	24.65
27mm	3.03"	1.41"	1.41"	-	D016227	866332	30.88	D015727	866815	24.74
28mm	3.03"	1.49"	1.49"	-	D016228	866333	33.64	-	-	-
29mm	3.03"	1.49"	1.49"	-	D016229	866334	33.64	-	-	-
30mm	3.03"	1.57"	1.57"	-	D016230	866335	34.59	-	-	-
31mm	3.03"	1.57"	1.57"	-	D016231	866336	35.87	-	-	-
32mm	3.03"	1.65"	1.65"	-	D016232	866337	35.87	-	-	-