

12" Hacksaw



A rugged heavy-duty industrial quality hacksaw designed for the professional.

- Strong aluminum die cast handle
- Guarded grip design
- Comes complete with a 12" chrome steel hacksaw blade

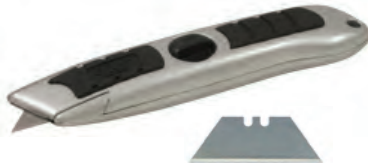


Model	Overall Length	Bow Depth	Code No.	Price \$
HF/12/BC	17-5/16"	4"	231370	36.32

Screw-Lock Utility Knife



- Heavy duty utility knife
- Handle stores extra blades
- Easy to remove and install blades
- Comfort grip handle
- Includes 3 blades



Description	Gray EDP	Code No.	Price \$
Screw-Lock Utility Knife	206	865638	14.87
Replacement Blades (pkg. 5)	206-KBL	865692	11.22

Pin Chuck Sets



- Designed for holding small drills in drilling machine
- Set includes three interchangeable collets and knurled chuck with 1/4" shank
- Range: 0-1/32, 1/32-1/16, 1/16-3/32
- Overall length 2-1/2"



Model No.	Description	Code No.	Price \$
6000-003	4pc Pin Chuck Set	606226	41.11

Pin Vises & Set



- Made of alloy steel, black oxide finish
- Collets grip firmly when chuck is tightened
- Knurled finger grip
- Range of set 0 - 0.188"
- Supplied in plastic pouch
- Ideal for holding small tools, rods, wires, taps, etc.



Model No.	Description	Code No.	Price \$
6000-004	4pc Pin Vise Set	606228	70.25
6000-004A	0.000-0.040 Pin Vise	606230	18.27
6000-004B	0.032-0.059 Pin Vise	606232	20.18
6000-004C	0.052-0.122 Pin Vise	606234	22.04
6000-004D	0.118-0.188 Pin Vise	606236	22.82

Pot Magnets



Unique combination of a strong magnet with nickel chrome plated insulating ring gives these magnets the superior holding power of larger ones.

- 1/4"-20 threaded



Model	Diameter (in.)	Height (in.)	Magnetic Pull (kg)	Code No.	Price \$
PMG/11-16	11/16	5/8	2.7	231420	11.81
PMG/13-16	13/16	3/4	4.5	231422	14.84
PMG/1-1-16	1-1/16	1	6.0	231424	23.58
PMG/1-3-8	1-3/8	1-3/16	13	231426	34.10

ASIMETO



For when you need accuracy, not a hammer.

High-precision measuring instruments, competitively priced!

See Chapter F