

6-Flute Countersinks HSS — 60°, 82°, 90°, 100°, 110°, 120°

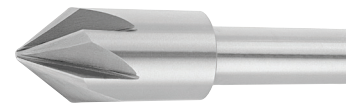
- Flutes are staggered to ensure smoother, chatter-free cutting action
- Steam black oxide surface treatment enhances tool life and prevents galling
- 100% CNC manufactured to tighter than industry standard tolerances



Body Dia. (in.)	Shank Dia. (in.)	60°	60° HSS Code No.	Price \$	82°	82° HSS Code No.	Price \$	90°	90° HSS Code No.	Price \$
1/8	1/8	HS6-1/8-60	121200	14.50	HS6-1/8-82	121230	14.50	HS6-1/8-90	121260	14.50
3/16	3/16	HS6-3/16-60	121202	14.96	HS6-3/16-82	121232	14.96	HS6-3/16-90	121262	14.96
1/4	1/4	HS6-1/4-60	121204	15.20	HS6-1/4-82	121234	16.59	HS6-1/4-90	121264	16.59
5/16	1/4	HS6-5/16-60	121206	16.94	HS6-5/16-82	121236	16.94	HS6-5/16-90	121266	16.94
3/8	1/4	HS6-3/8-60	121208	20.88	HS6-3/8-82	121238	20.88	HS6-3/8-90	121268	19.13
1/2	3/8	HS6-1/2-60	121210	26.21	HS6-1/2-82	121240	26.21	HS6-1/2-90	121270	23.99
5/8	3/8	HS6-5/8-60	121212	37.22	HS6-5/8-82	121242	37.22	HS6-5/8-90	121272	34.21
3/4	1/2	HS6-3/4-60	121214	51.83	HS6-3/4-82	121244	51.83	HS6-3/4-90	121274	47.55
7/8	1/2	HS6-7/8-60	121216	66.68	HS6-7/8-82	121246	72.59	HS6-7/8-90	121276	66.68
1	1/2	HS6-1-60	121218	84.20	HS6-1-82	121248	84.20	HS6-1-90	121278	84.20
1-1/4	1/2	HS6-1-1/4-60	121220	118.98	HS6-1-1/4-82	121250	118.98	HS6-1-1/4-90	121280	118.98
1-1/2	3/4	HS6-1-1/2-60	121222	169.42	HS6-1-1/2-82	121252	184.26	HS6-1-1/2-90	121282	169.42
2	3/4	HS6-2-60	121224	300.93	HS6-2-82	121254	327.60	HS6-2-90	121284	300.93
2-1/2	3/4	HS6-2-1/2-60	121226	808.97	HS6-2-1/2-82	121256	809.79	HS6-2-1/2-90	121286	809.79
3	3/4	HS6-3-60	121228	1,004.03	HS6-3-82	121258	1,004.03	HS6-3-90	121288	1,004.03

Body Dia. (in.)	Shank Dia. (in.)	100°	100° HSS Code No.	Price \$	110°	110° HSS Code No.	Price \$	120°	120° HSS Code No.	Price \$
1/8	1/8	HS6-1/8-100	121261	14.50	HS6-1/8-110	121292	14.50	HS6-1/8-120	121318	14.50
3/16	3/16	HS6-3/16-100	121263	14.96	HS6-3/16-110	121294	14.96	HS6-3/16-120	121320	14.96
1/4	1/4	HS6-1/4-100	121265	15.20	HS6-1/4-110	121296	15.20	HS6-1/4-120	121322	15.20
5/16	1/4	HS6-5/16-100	121267	18.55	HS6-5/16-110	121298	16.94	HS6-5/16-120	121324	16.94
3/8	1/4	HS6-3/8-100	121269	19.13	HS6-3/8-110	121300	19.13	HS6-3/8-120	121326	20.88
1/2	3/8	HS6-1/2-100	121271	26.21	HS6-1/2-110	121302	23.99	HS6-1/2-120	121328	23.99
5/8	3/8	HS6-5/8-100	121273	34.21	HS6-5/8-110	121304	34.21	HS6-5/8-120	121330	34.21
3/4	1/2	HS6-3/4-100	121275	47.55	HS6-3/4-110	121306	47.55	HS6-3/4-120	121332	51.83
7/8	1/2	HS6-7/8-100	121277	66.68	HS6-7/8-110	121308	66.68	HS6-7/8-120	121334	66.68
1	1/2	HS6-1-100	121279	77.34	HS6-1-110	121310	77.34	HS6-1-120	121336	77.34
1-1/4	1/2	HS6-1-1/4-100	121281	109.25	HS6-1-1/4-110	121312	109.25	HS6-1-1/4-120	121338	109.25
1-1/2	3/4	HS6-1-1/2-100	121283	169.42	HS6-1-1/2-110	121314	169.42	HS6-1-1/2-120	121340	169.42
2	3/4	HS6-2-100	121285	300.93	HS6-2-110	121316	300.93	HS6-2-120	121342	301.17

6-Flute HSS Chatterless Countersinks



Flute Dia. (in.)	Shank Dia. (in.)	60° Code No.	Price \$	82° Code No.	Price \$	90° Code No.	Price \$
3/16	3/16	120700	17.81	120713	17.81	120726	17.84
1/4	1/4	120701	17.84	120714	17.84	120727	17.84
5/16	1/4	120702	21.76	120715	21.76	120728	21.76
3/8	1/4	120703	25.77	120716	25.77	120729	25.77
1/2	1/4	120704	31.67	120717	31.67	120730	31.67
5/8	1/2	120705	47.50	120718	47.50	120731	47.50
3/4	-	120706	61.34	120719	61.34	120732	61.34
7/8	1/2	120707	81.18	120720	81.18	120733	81.18
1	-	120708	97.01	120721	97.01	120734	97.01
1-1/4	3/4	120709	142.49	120722	142.49	120735	142.49
1-1/2	3/4	120710	195.88	120723	193.90	120736	195.88
1-3/4	1	120711	185.11	-	-	120737	253.31
2	1	120712	302.75	120725	302.75	120738	306.71