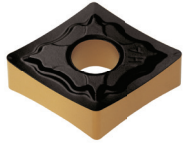
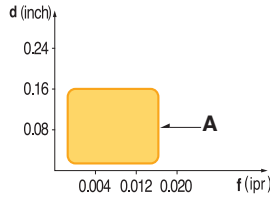




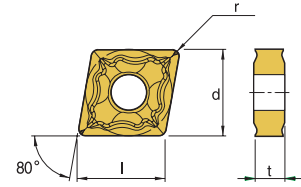
CNMG-A



- Sharp cutting edge generates low cutting force
- Specially designed tough main cutting edge
- Suitable for cutting of low carbon steel, stainless steel, aluminum

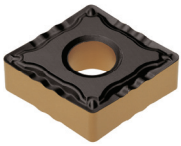


- USE Light & Medium
- Recommendation **A** $d = 0.03 \sim 0.16$ inch
 $f = 0.002 \sim 0.016$ ipr

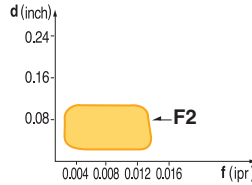


| Designation | ISO | Coated Carbide | | | | | | | | | | Cermet | | Uncoated Carbide | (inch) | | | | Applicable Holders | |
|-------------|--------|----------------|-------|-------|--------------------|-------|-------|--------------------|-------|-------|-------|--------|-------|--------------------|--------|-----|------|------|--|----------|
| | | PT10C | PT20C | PT22C | PT25C | PM10P | MT20C | MT30P | KT05C | KT10C | ST10P | PT10S | PT20S | KTM10U | l | d | t | r | Holder | Page No. |
| CNMG 431-A | 120404 | | | | | | | | | | | | | 147524 \$ 10.45 | 0.508 | 1/2 | 3/16 | 1/64 | Turning MCKNR/L E48 MCLNR/L E48 MCRNR/L E49 | |
| CNMG 432-A | 120408 | | | | 149285 \$ 13.04 | | | 147525 \$ 13.03 | | | | | | 147526 \$ 10.45 | 0.508 | 1/2 | 3/16 | 1/32 | Boring MCLNR/L E64 PCLNR/L E67 | |

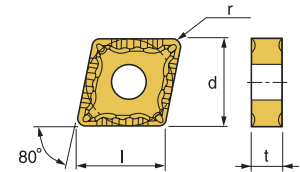
CNMG-F2



- Excellent chip control at varied depth of cutting
- Strong cutting edge toughness due to special design

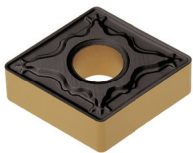


- USE Finishing
- Recommendation **F2** $d = 0.01 \sim 0.1$ inch
 $f = 0.002 \sim 0.014$ ipr

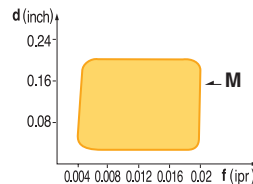


| Designation | ISO | Coated Carbide | | | | | | | | | | Cermet | | Uncoated Carbide | (inch) | | | | Applicable Holders | |
|-------------|--------|----------------|--------------------|--------------------|-------|-------|-------|-------|-------|-------|-------|--------|-------|------------------|--------|-----|------|------|--|----------|
| | | PT10C | PT15C | PT25C | PT30C | PM10P | MT20C | MT30P | KT05C | KT10C | KT15C | PT10S | PT20S | KTM10U | l | d | t | r | Holder | Page No. |
| CNMG 431-F2 | 120404 | | 149333 \$ 12.65 | | | | | | | | | | | | 0.508 | 1/2 | 3/16 | 1/64 | Turning MCKNR/L E48 MCLNR/L E48 MCRNR/L E49 | |
| CNMG 432-F2 | 09T304 | | 149390 \$ 13.03 | 149391 \$ 13.03 | | | | | | | | | | | 0.508 | 1/2 | 3/16 | 1/32 | Boring MCLNR/L E64 PCLNR/L E67 | |

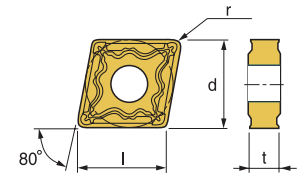
CNMG-M/M1



- Wide available chip control range from medium-finishing to medium-roughing
- Suitable chip breaker for CNC machining



- USE Medium
- Recommendation **M** $d = 0.04 \sim 0.2$ inch
 $f = 0.004 \sim 0.02$ ipr



| Designation | ISO | Coated Carbide | | | | | | | | | | Cermet | | Uncoated Carbide | (inch) | | | | Applicable Holders | |
|-------------|--------|----------------|--------------------|-------|--------------------|--------------------|-------|--------------------|-------|--------------------|-------|--------|-------|------------------|--------|-----|------|------|--|----------|
| | | PT10C | PT15C | PT20C | PT25C | PT30C | MT20C | MT30P | KT05C | KT10C | ST10P | PT10S | PT20S | KTM10U | l | d | t | r | Holder | Page No. |
| CNMG 431-M | 120404 | | | | 149394 \$ 13.03 | 147531 \$ 12.65 | | 148819 \$ 12.65 | | | | | | | 0.508 | 1/2 | 3/16 | 1/64 | Turning MCKNR/L E48 MCLNR/L E48 MCRNR/L E49 | |
| CNMG 431-M1 | 120404 | | | | 149251 \$ 13.03 | | | | | | | | | | 0.508 | 1/2 | 3/16 | 1/64 | Boring MCLNR/L E64 PCLNR/L E67 | |
| CNMG 432-M1 | 120408 | | 149393 \$ 12.65 | | 149377 \$ 13.03 | | | | | | | | | | 0.508 | 1/2 | 3/16 | 1/32 | | |
| CNMG 432-M | 120408 | | | | 149231 \$ 13.03 | 147535 \$ 13.03 | | | | | | | | | 0.508 | 1/2 | 3/16 | 1/32 | | |
| CNMG 433-M | 120412 | | | | 149375 \$ 13.03 | 147538 \$ 12.65 | | | | | | | | | 0.508 | 1/2 | 3/16 | 3/64 | | |
| CNMG 433-M1 | 120142 | | 149555 \$ 13.03 | | | | | | | | | | | | 0.508 | 1/2 | 3/16 | 3/64 | | |
| CNMG 543-M | 160612 | | | | | 148306 \$ 19.97 | | | | | | | | | 0.634 | 5/8 | 1/4 | 3/64 | | |
| CNMG 643-M | 190612 | | | | | | | | | 148949 \$ 21.62 | | | | | 0.760 | 3/4 | 1/4 | 3/64 | | |